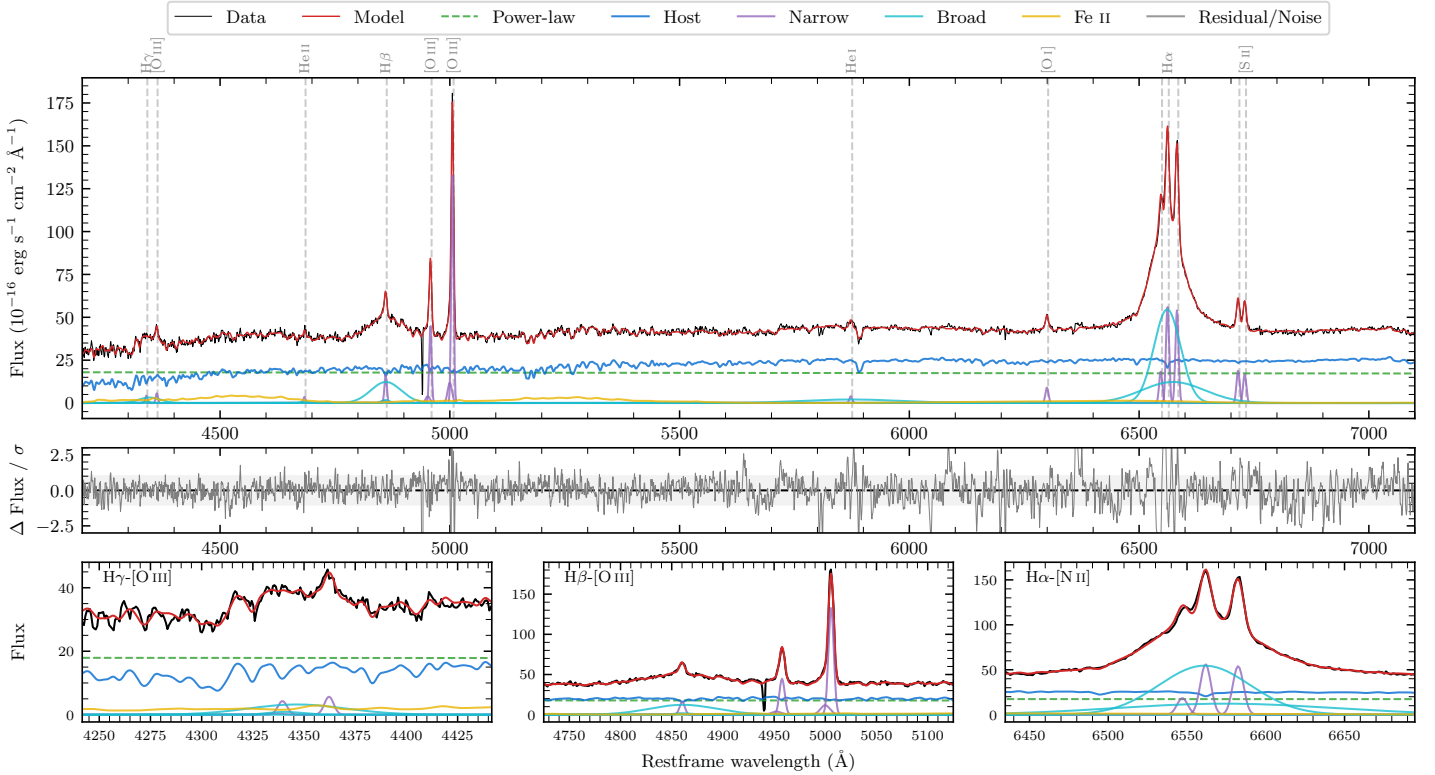
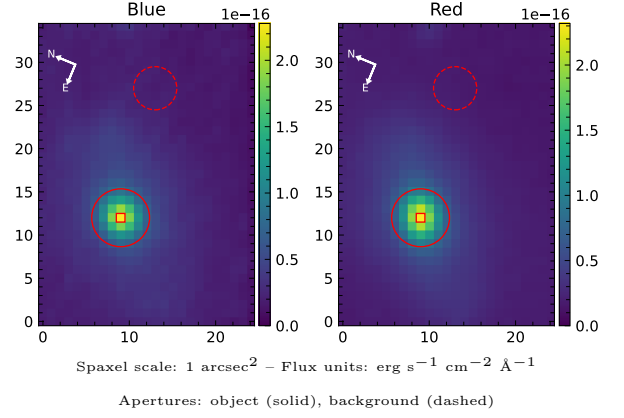


# NGC 6860

Spectrum ID	485673774_sp1	Spectrum type	Sy 1.5
Alt name	g2008469-610560	Quality flag	good
$z$	0.0146	AGN reference	6dFGS
RA, Dec	302.1954, -61.0999	MW $E(B - V)$	0.036
MJD	59078.4	Power law $\alpha_\nu$	$-1.92 \pm 0.06$
SNR/ $\text{\AA}$ B/R	20.2/44.2	$\log L_{5100, \text{AGN}}$	$42.68 \pm 0.01$
Obs airmass	1.32	$\log H\beta_{\text{Br}}/[\text{O III}]$	$0.02 \pm 0.01$
SMSS ID	485673774	$\log M_{L5100}/M_\odot$	$7.59 \pm 0.07$
Neighbour	None $< 15''$	$\log M_{\text{H}\alpha}/M_\odot$	$7.29 \pm 0.03$
SMSS $\langle r_6''_{\text{ap}} \rangle$	$14.28 \pm 0.06$	$\log M_{\text{H}\beta}/M_\odot$	$7.52 \pm 0.08$
2MASS $K_{\text{ext}}$	$9.39 \pm 0.02$	$\log M_{[\text{O III}]} / M_\odot$	$7.64 \pm 0.08$



## Emission Line Measurements

Line	$\log L$ (erg s <sup>-1</sup> )	FWHM (km s <sup>-1</sup> )	$\sigma$ (km s <sup>-1</sup> )	EW (Å)
H $\gamma$ Narrow	$39.17 \pm 0.19$	$380 \pm 63$	$213 \pm 25$	$1.59 \pm 0.43$
<b>H<math>\gamma</math> Broad</b>	<b><math>40.06 \pm 0.08</math></b>	<b><math>3230 \pm 581</math></b>	<b><math>1332 \pm 84</math></b>	<b><math>11.89 \pm 1.09</math></b>
[O III] 4364	$39.23 \pm 0.13$	$366 \pm 63$	$155 \pm 25$	$1.82 \pm 0.33$
He II Narrow	$39.06 \pm 0.19$	$366 \pm 63$	$155 \pm 25$	$1.23 \pm 0.26$
<b>He II Broad</b>	<b><math>39.04 \pm 0.32</math></b>	<b><math>1179 \pm 62</math></b>	<b><math>501 \pm 25</math></b>	<b><math>1.17 \pm 0.45</math></b>
H $\beta$ Narrow	$39.80 \pm 0.04$	$380 \pm 63$	$213 \pm 25$	$6.84 \pm 0.33$
<b>H<math>\beta</math> Broad</b>	<b><math>40.75 \pm 0.01</math></b>	<b><math>4250 \pm 317</math></b>	<b><math>1716 \pm 41</math></b>	<b><math>59.77 \pm 0.93</math></b>
[O III] 5007	$40.73 \pm 0.01$	$380 \pm 63$	$213 \pm 25$	$57.39 \pm 0.34$
He I Narrow	$39.21 \pm 0.06$	$366 \pm 63$	$155 \pm 25$	$1.75 \pm 0.16$
<b>He I Broad</b>	<b><math>40.47 \pm 0.03</math></b>	<b><math>12738 \pm 178</math></b>	<b><math>5409 \pm 75</math></b>	<b><math>32.09 \pm 1.26</math></b>
[O I] 6300	$39.59 \pm 0.02$	$366 \pm 63$	$155 \pm 25$	$4.31 \pm 0.19$
H $\alpha$ Narrow	$40.41 \pm 0.01$	$366 \pm 63$	$155 \pm 25$	$27.94 \pm 0.21$
<b>H<math>\alpha</math> Broad</b>	<b><math>41.51 \pm 0.01</math></b>	<b><math>3472 \pm 65</math></b>	<b><math>1554 \pm 25</math></b>	<b><math>355.03 \pm 0.79</math></b>
[N II] 6585	$40.39 \pm 0.01$	$366 \pm 63$	$155 \pm 25$	$27.00 \pm 0.21$
[S II] 6718	$39.94 \pm 0.01$	$366 \pm 63$	$155 \pm 25$	$9.64 \pm 0.17$
[S II] 6732	$39.89 \pm 0.01$	$366 \pm 63$	$155 \pm 25$	$8.57 \pm 0.18$

## Emission Summary

H $\alpha$ broad SNR	33.86
H $\beta$ broad SNR	7.17
H $\gamma$ broad SNR	2.17
AGN frac	0.48
Host frac	0.52
$\log L_{5100, \text{Host}}$	42.72
Fe II/H $\beta$	0.97
Fe II/[O III]	1.01

## Quality Flags

spurious_hab/hbb	0/0
15100	1
balmer	0
balmer_snr	1
hb_width	0
balmer_width	0