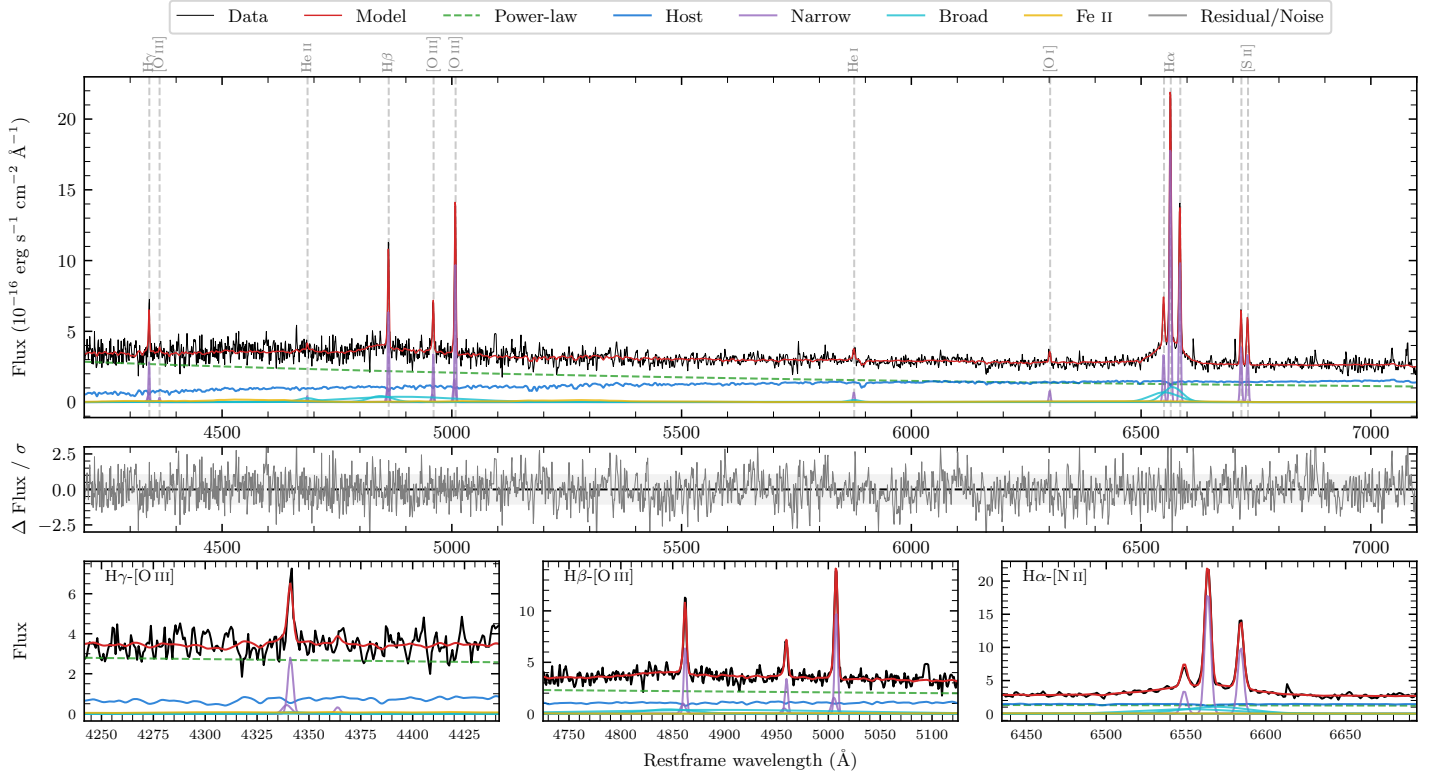
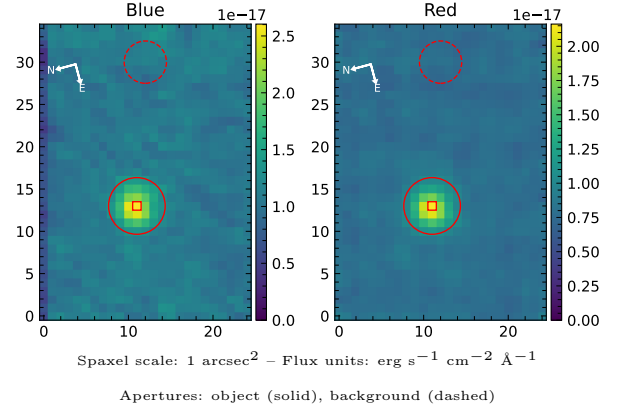


# 6dFGS gJ220156.8–782828

Spectrum ID	485497723_sp1	Spectrum type	Sy 1.5
Alt name	g2201568–782828	Quality flag	good
$z$	0.0951	AGN reference	6dFGS
RA, Dec	330.4868, –78.4743	MW $E(B - V)$	0.133
MJD	60168.61	Power law $\alpha_\nu$	$-0.19 \pm 0.22$
SNR/ $\text{\AA}$ B/R	8.2/11.0	$\log L_{5100, \text{AGN}}$	$43.37 \pm 0.03$
Obs airmass	1.47	$\log H\beta_{\text{Br}}/[\text{O III}]$	$-0.23 \pm 0.41$
SMSS ID	485497723	$\log M_{L5100}/M_\odot$	$7.76 \pm 0.04$
Neighbour	6.3", 1591224669	$\log M_{H\alpha}/M_\odot$	$7.04 \pm 0.05$
SMSS $\langle r_6''_{\text{ap}} \rangle$	$16.82 \pm 0.03$	$\log M_{H\beta}/M_\odot$	$7.43 \pm 0.20$
2MASS $K_{\text{ext}}$	$12.89 \pm 0.12$	$\log M_{[\text{O III}]} / M_\odot$	$7.67 \pm 0.05$



## Emission Line Measurements

Line	$\log L$ (erg s <sup>-1</sup> )	FWHM (km s <sup>-1</sup> )	$\sigma$ (km s <sup>-1</sup> )	EW (Å)
H $\gamma$ Narrow	$40.44 \pm 0.06$	$222 \pm 63$	$111 \pm 26$	$4.47 \pm 0.42$
<b>H<math>\gamma</math> Broad</b>	—	—	—	—
[O III] 4364	$39.41 \pm 0.41$	$208 \pm 62$	$85 \pm 25$	$0.42 \pm 0.32$
He II Narrow	$39.55 \pm 0.32$	$208 \pm 62$	$85 \pm 25$	$0.66 \pm 0.33$
<b>He II Broad</b>	—	—	—	—
H $\beta$ Narrow	$40.85 \pm 0.02$	$222 \pm 63$	$111 \pm 26$	$14.12 \pm 0.49$
<b>H<math>\beta</math> Broad</b>	$40.82^{+0.73}_{-0.10}$	<b><math>3668 \pm 158</math></b>	<b><math>1292 \pm 59</math></b>	<b><math>13.48 \pm 1.65</math></b>
[O III] 5007	$41.05 \pm 0.02$	$222 \pm 63$	$111 \pm 26$	$23.90 \pm 0.56$
He I Narrow	$39.86 \pm 0.14$	$208 \pm 62$	$85 \pm 25$	$2.05 \pm 0.32$
<b>He I Broad</b>	<b><math>40.07 \pm 0.22</math></b>	<b><math>1497 \pm 109</math></b>	<b><math>635 \pm 45</math></b>	<b><math>3.34 \pm 0.94</math></b>
[O I] 6300	$39.95 \pm 0.10$	$208 \pm 62$	$85 \pm 25$	$2.85 \pm 0.40$
H $\alpha$ Narrow	$41.34 \pm 0.01$	$208 \pm 62$	$85 \pm 25$	$74.79 \pm 0.57$
<b>H<math>\alpha</math> Broad</b>	<b><math>41.44 \pm 0.02</math></b>	<b><math>2751 \pm 121</math></b>	<b><math>1078 \pm 35</math></b>	<b><math>94.24 \pm 2.02</math></b>
[N II] 6585	$41.07 \pm 0.01$	$208 \pm 62$	$85 \pm 25$	$41.21 \pm 0.46$
[S II] 6718	$40.67 \pm 0.02$	$208 \pm 62$	$85 \pm 25$	$16.66 \pm 0.52$
[S II] 6732	$40.61 \pm 0.03$	$208 \pm 62$	$85 \pm 25$	$14.78 \pm 0.55$

## Emission Summary

H $\alpha$ broad SNR	3.94
H $\beta$ broad SNR	1.03
H $\gamma$ broad SNR	0.40
AGN frac	0.66
Host frac	0.34
$\log L_{5100, \text{Host}}$	43.07
Fe II/H $\beta$	—
Fe II/[O III]	—

## Quality Flags

spurious_hab/hbb	0/1
15100	0
balmer	1
balmer_snr	2
hb_width	0
balmer_width	0