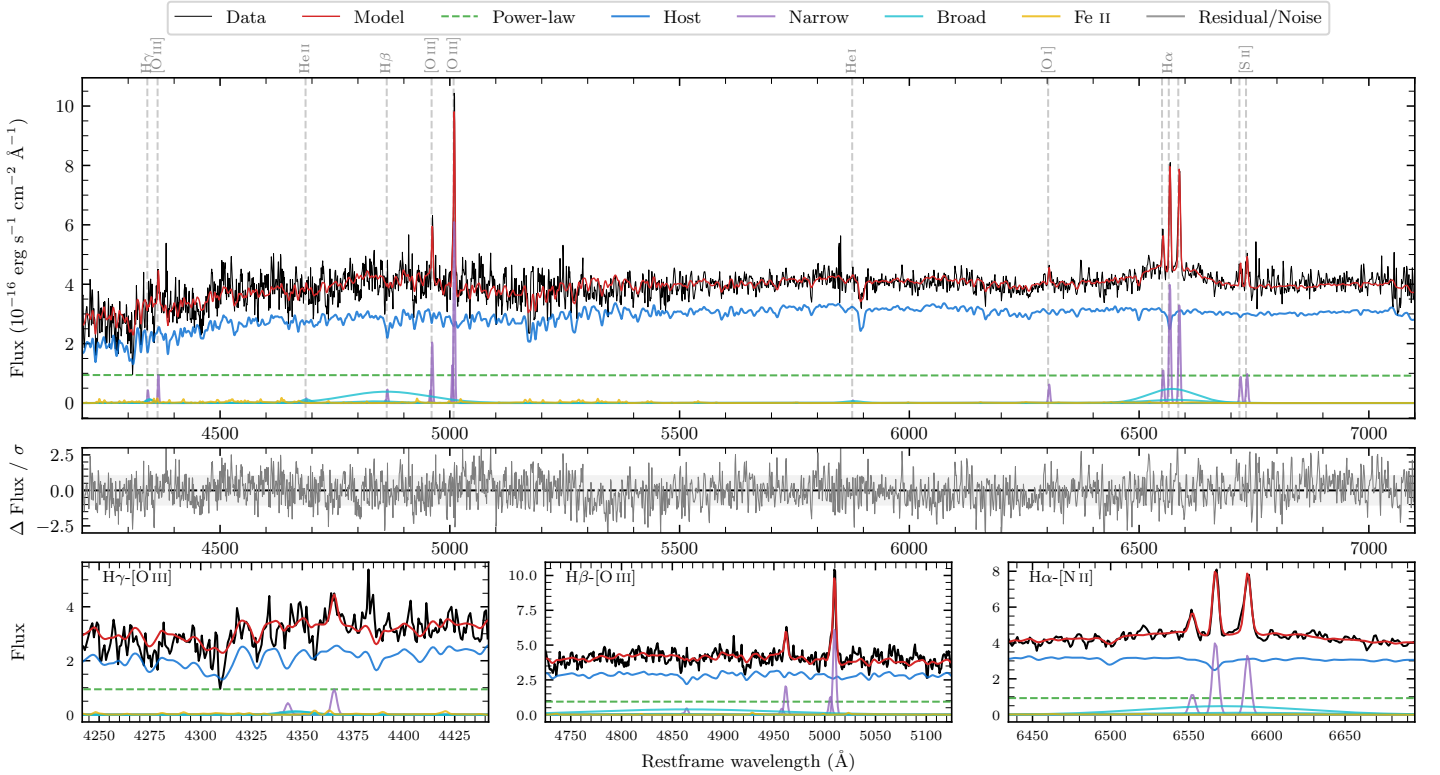
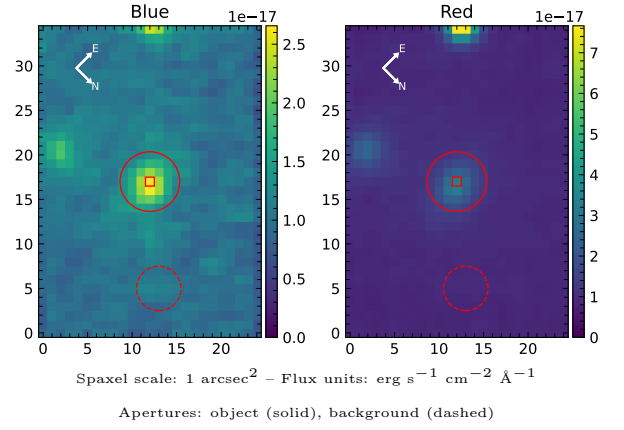


LEDA 237342

Spectrum ID	485333702_sp1	Spectrum type	Sy 1.5+
Alt name	g2031350-770942	Quality flag	good
z	0.0779	AGN reference	6dFGS
RA, Dec	307.8958, -77.1617	MW $E(B-V)$	0.097
MJD	60164.56	Power law α_ν	-1.96 ± 0.04
SNR/ \AA B/R	10.0/18.9	$\log L_{5100, \text{AGN}}$	42.85 ± 0.04
Obs airmass	1.43	$\log H\beta_{\text{Br}}/[\text{O III}]$	< 0.22
SMSS ID	485333702	$\log M_{L5100}/M_\odot$	—
Neighbour	10.3", 485333701	$\log M_{H\alpha}/M_\odot$	7.46 ± 0.05
SMSS $\langle r_6''_{\text{ap}} \rangle$	17.02 ± 0.12	$\log M_{H\beta}/M_\odot$	—
2MASS K_{ext}	12.70 ± 0.13	$\log M_{[\text{O III}]} / M_\odot$	—



Emission Line Measurements

Line	$\log L$ (erg s^{-1})	FWHM (km s^{-1})	σ (km s^{-1})	EW (\AA)
H γ Narrow	39.43 ± 0.36	226 ± 63	127 ± 26	1.93 ± 0.94
Hγ Broad	—	—	—	—
[O III] 4364	39.69 ± 0.16	214 ± 62	89 ± 25	3.51 ± 0.87
He II Narrow	—	—	—	—
He II Broad	—	—	—	—
H β Narrow	39.51 ± 0.28	226 ± 63	127 ± 26	2.31 ± 0.85
Hβ Broad	< 40.87	—	—	—
[O III] 5007	40.65 ± 0.02	226 ± 63	127 ± 26	32.22 ± 0.96
He I Narrow	—	—	—	—
He I Broad	39.72 ± 0.32	2404 ± 62	1021 ± 25	3.85 ± 1.90
[O I] 6300	39.67 ± 0.11	214 ± 62	89 ± 25	3.41 ± 0.47
H α Narrow	40.50 ± 0.02	214 ± 62	89 ± 25	23.21 ± 0.54
Hα Broad	41.10 ± 0.03	5674 ± 175	2121 ± 86	90.76 ± 3.29
[N II] 6585	40.42 ± 0.02	214 ± 62	89 ± 25	19.12 ± 0.52
[S II] 6718	39.86 ± 0.14	214 ± 62	89 ± 25	5.28 ± 0.88
[S II] 6732	39.89 ± 0.08	214 ± 62	89 ± 25	5.74 ± 0.64

Emission Summary

H α broad SNR	1.58
H β broad SNR	0.15
H γ broad SNR	0.00
AGN frac	0.25
Host frac	0.75
$\log L_{5100, \text{Host}}$	43.32
Fe II/H β	—
Fe II/[O III]	—

Quality Flags

spurious_hab/hbb	0/1
15100	1
balmer	2
balmer_snr	2
hb_width	2
balmer_width	2