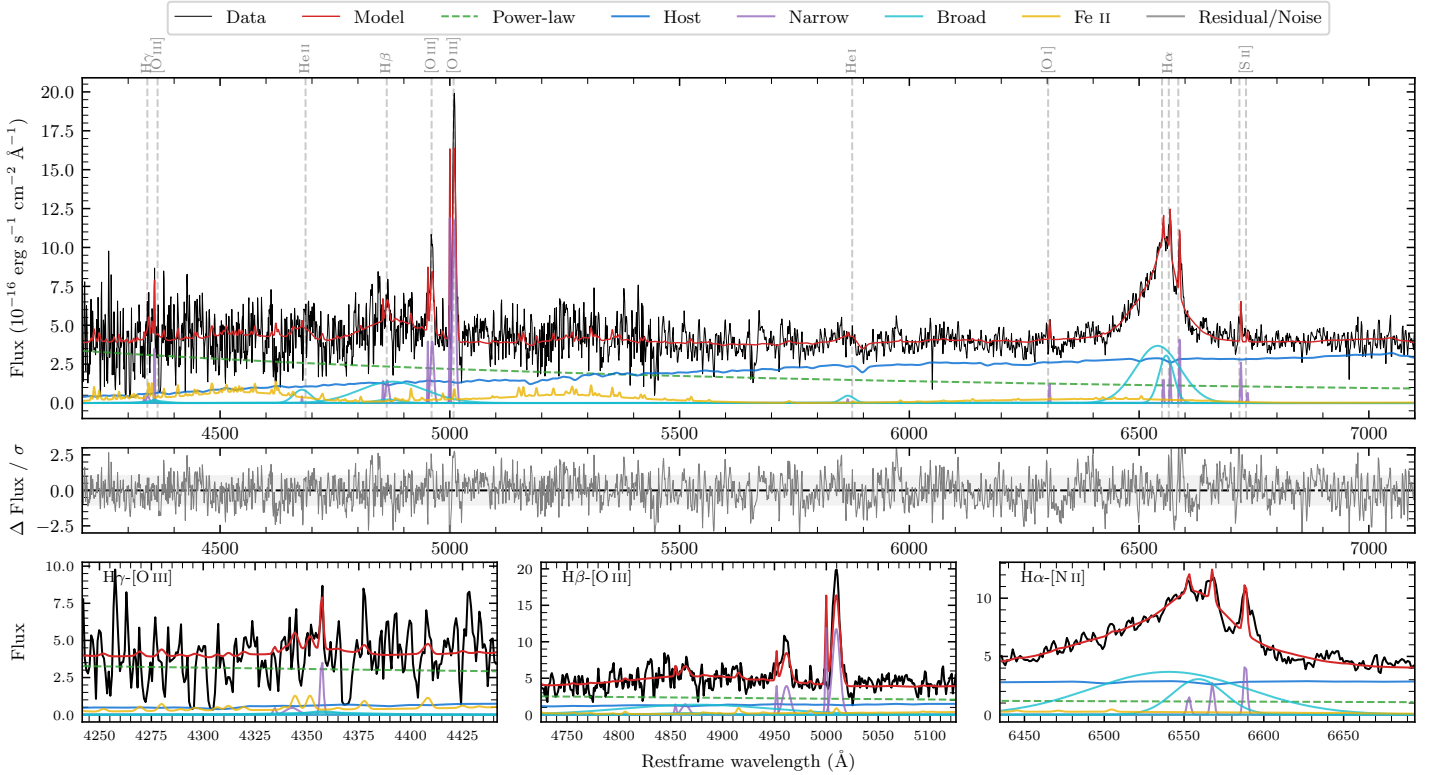
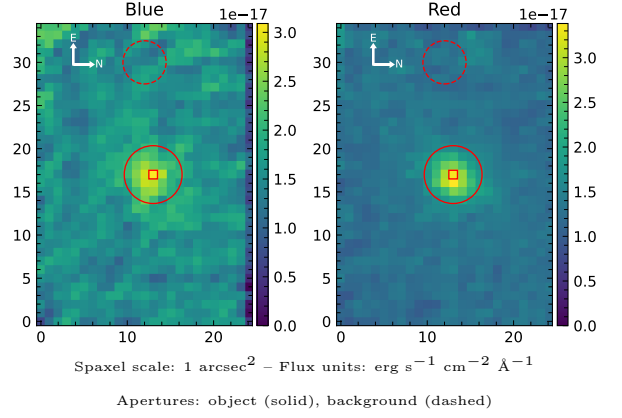


# LEDA 140831

Spectrum ID	484547673_sp1	Spectrum type	Bad
Alt name	PGC 140831	Quality flag	bad_all
$z$	0.0419	AGN reference	PGC
RA, Dec	284.2823, -78.4726	MW $E(B - V)$	0.135
MJD	60905.46	Power law $\alpha_\nu$	$0.43 \pm 0.06$
SNR/ $\text{\AA}$ B/R	3.4/8.0	$\log L_{5100, \text{AGN}}$	$42.64 \pm 0.04$
Obs airmass	1.47	$\log H\beta_{\text{Br}}/[\text{O III}]$	$0.31 \pm 0.05$
SMSS ID	484547673	$\log M_{L5100}/M_\odot$	$8.26 \pm 0.09$
Neighbour	12.7", 2690879435	$\log M_{\text{H}\alpha}/M_\odot$	$7.15 \pm 0.06$
SMSS $\langle r_{6'' \text{ap}} \rangle$	$15.45 \pm 0.04$	$\log M_{\text{H}\beta}/M_\odot$	$8.34 \pm 0.10$
2MASS $K_{\text{ext}}$	$10.88 \pm 0.06$	$\log M_{[\text{O III}]} / M_\odot$	$8.32 \pm 0.10$



## Emission Line Measurements

Line	$\log L$ (erg s <sup>-1</sup> )	FWHM (km s <sup>-1</sup> )	$\sigma$ (km s <sup>-1</sup> )	EW (Å)
H $\gamma$ Narrow	—	—	—	—
<b>H<math>\gamma</math> Broad</b>	—	—	—	—
[O III] 4364	$39.47 \pm 0.21$	$131 \pm 62$	$50 \pm 25$	$2.36 \pm 0.75$
He II Narrow	—	—	—	—
<b>He II Broad</b>	<b><math>40.23 \pm 0.17</math></b>	<b><math>2790 \pm 63</math></b>	<b><math>1185 \pm 25</math></b>	<b><math>16.08 \pm 3.49</math></b>
H $\beta$ Narrow	$39.82 \pm 0.19$	—	$299 \pm 25$	$6.82 \pm 1.48$
<b>H<math>\beta</math> Broad</b>	<b><math>41.06 \pm 0.05</math></b>	<b><math>9281 \pm 957</math></b>	<b><math>3699 \pm 82</math></b>	<b><math>117.26 \pm 7.08</math></b>
[O III] 5007	$40.75 \pm 0.02$	—	$299 \pm 25$	$62.38 \pm 1.64$
He I Narrow	—	—	—	—
<b>He I Broad</b>	<b><math>39.86 \pm 0.15</math></b>	<b><math>1702 \pm 63</math></b>	<b><math>723 \pm 25</math></b>	<b><math>11.76 \pm 2.16</math></b>
[O I] 6300	$39.14 \pm 0.20$	$131 \pm 62$	$50 \pm 25$	$2.67 \pm 0.68$
H $\alpha$ Narrow	$39.51 \pm 0.10$	$131 \pm 62$	$50 \pm 25$	$6.99 \pm 0.83$
<b>H<math>\alpha</math> Broad</b>	<b><math>41.39 \pm 0.01</math></b>	<b><math>3234 \pm 186</math></b>	<b><math>1604 \pm 25</math></b>	<b><math>524.22 \pm 5.39</math></b>
[N II] 6585	$39.74 \pm 0.06$	$131 \pm 62$	$50 \pm 25$	$11.86 \pm 1.08$
[S II] 6718	$39.51 \pm 0.09$	$131 \pm 62$	$50 \pm 25$	$7.27 \pm 0.76$
[S II] 6732	$38.94 \pm 0.35$	$131 \pm 62$	$50 \pm 25$	$1.98 \pm 1.04$

## Emission Summary

H $\alpha$ broad SNR	5.36
H $\beta$ broad SNR	1.37
H $\gamma$ broad SNR	0.40
AGN frac	0.58
Host frac	0.41
$\log L_{5100, \text{Host}}$	42.49
Fe II/H $\beta$	0.85
Fe II/[O III]	1.71

## Quality Flags

spurious_hab/hbb	0/0
15100	2
balmer	1
balmer_snr	2
hb_width	0
balmer_width	1