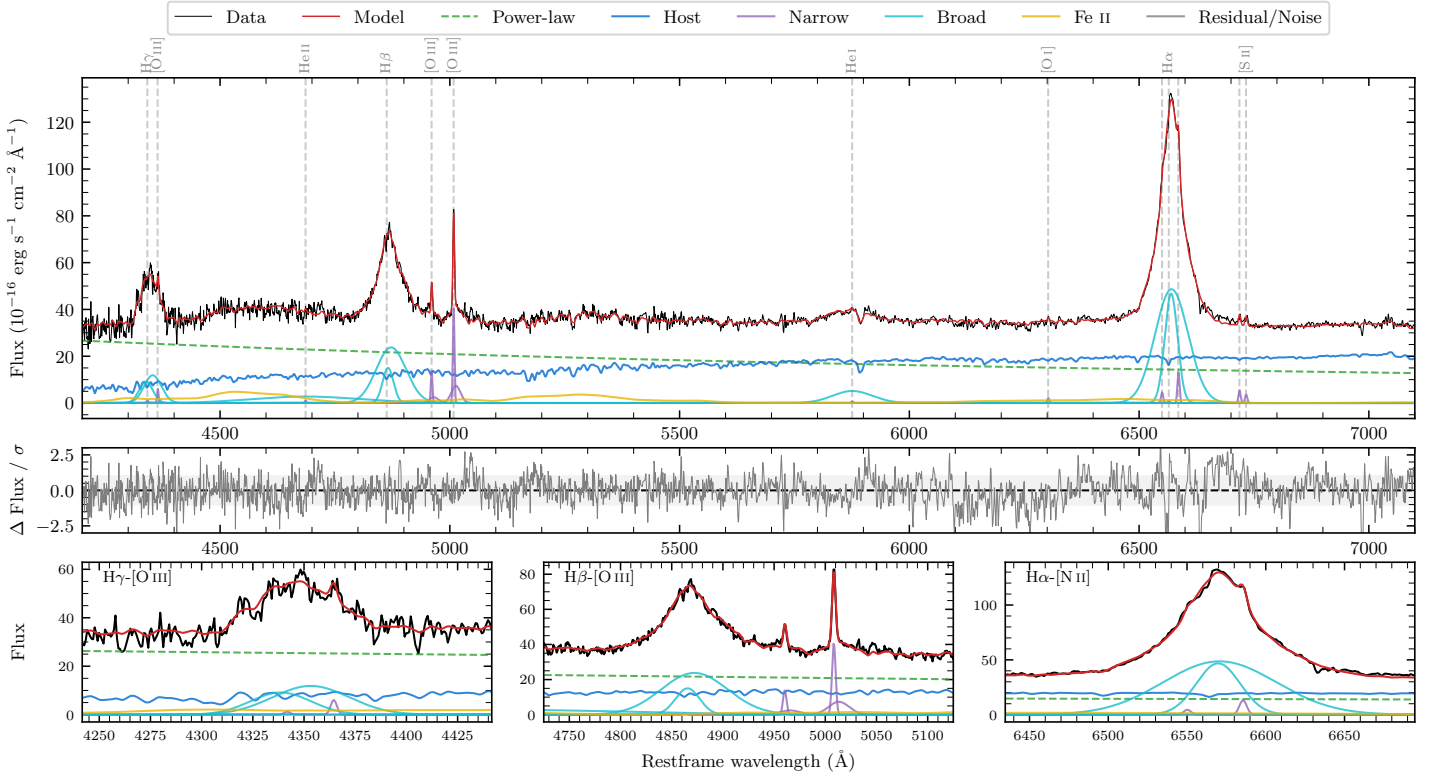
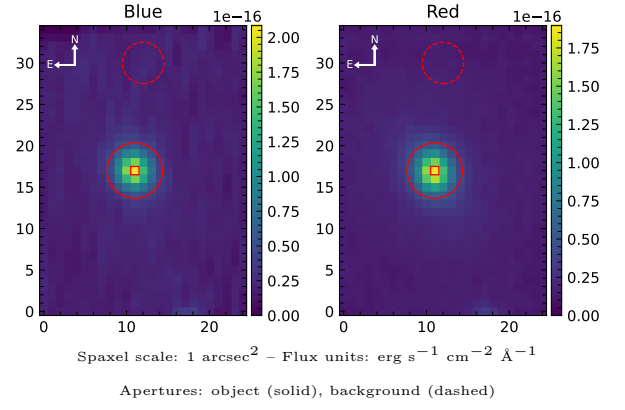


# ESO 25–2

Spectrum ID	484536288_sp2	Spectrum type	Sy 1.0
Alt name	g1854403–785354	Quality flag	good
$z$	0.0290	AGN reference	6dFGS
RA, Dec	283.6679, –78.8983	MW $E(B - V)$	0.136
MJD	60901.47	Power law $\alpha_\nu$	$-0.60 \pm 0.12$
SNR/Å B/R	17.9/32.7	$\log L_{5100, \text{AGN}}$	$43.30 \pm 0.02$
Obs airmass	1.48	$\log H\beta_{\text{Br}}/[\text{O III}]$	$0.82 \pm 0.02$
SMSS ID	484536288	$\log M_{L5100}/M_\odot$	$7.60 \pm 0.03$
Neighbour	None $< 15''$	$\log M_{\text{H}\alpha}/M_\odot$	$7.27 \pm 0.03$
SMSS $\langle r_6'' \text{ ap} \rangle$	$15.32 \pm 0.06$	$\log M_{\text{H}\beta}/M_\odot$	$7.68 \pm 0.03$
2MASS $K_{\text{ext}}$	$10.34 \pm 0.05$	$\log M_{[\text{O III}]} / M_\odot$	$7.44 \pm 0.04$



## Emission Line Measurements

Line	$\log L$ (erg s $^{-1}$ )	FWHM (km s $^{-1}$ )	$\sigma$ (km s $^{-1}$ )	EW (Å)
H $\gamma$ Narrow	–	–	–	–
<b>H<math>\gamma</math> Broad</b>	<b><math>41.25 \pm 0.02</math></b>	<b><math>3049 \pm 85</math></b>	<b><math>1101 \pm 25</math></b>	<b><math>36.31 \pm 0.78</math></b>
[O III] 4364	$39.66 \pm 0.18$	$249 \pm 63$	$104 \pm 25$	$0.94 \pm 0.21$
He II Narrow	$39.00 \pm 0.42$	$249 \pm 63$	$104 \pm 25$	$0.22 \pm 0.19$
<b>He II Broad</b>	<b><math>41.21 \pm 0.04</math></b>	<b><math>17661 \pm 62</math></b>	<b><math>7500 \pm 25</math></b>	<b><math>36.78 \pm 1.69</math></b>
H $\beta$ Narrow	–	–	–	–
<b>H<math>\beta</math> Broad</b>	<b><math>41.67 \pm 0.01</math></b>	<b><math>3138 \pm 103</math></b>	<b><math>1492 \pm 25</math></b>	<b><math>113.00 \pm 0.86</math></b>
[O III] 5007	$40.86 \pm 0.02$	$280 \pm 63$	$457 \pm 28$	$18.03 \pm 0.46$
He I Narrow	$38.85 \pm 0.38$	$249 \pm 63$	$104 \pm 25$	$0.22 \pm 0.14$
<b>He I Broad</b>	<b><math>41.04 \pm 0.02</math></b>	<b><math>5140 \pm 64</math></b>	<b><math>2183 \pm 26</math></b>	<b><math>34.16 \pm 1.24</math></b>
[O I] 6300	$39.37 \pm 0.15$	$249 \pm 63$	$104 \pm 25$	$0.80 \pm 0.16$
H $\alpha$ Narrow	$38.94 \pm 0.45$	$249 \pm 63$	$104 \pm 25$	$0.32 \pm 0.25$
<b>H<math>\alpha</math> Broad</b>	<b><math>42.08 \pm 0.01</math></b>	<b><math>2280 \pm 65</math></b>	<b><math>1118 \pm 25</math></b>	<b><math>434.73 \pm 0.85</math></b>
[N II] 6585	$40.18 \pm 0.04$	$249 \pm 63$	$104 \pm 25$	$5.55 \pm 0.26$
[S II] 6718	$39.81 \pm 0.06$	$249 \pm 63$	$104 \pm 25$	$2.40 \pm 0.19$
[S II] 6732	$39.63 \pm 0.08$	$249 \pm 63$	$104 \pm 25$	$1.60 \pm 0.19$

## Emission Summary

H $\alpha$ broad SNR	43.98
H $\beta$ broad SNR	17.69
H $\gamma$ broad SNR	8.82
AGN frac	0.62
Host frac	0.38
$\log L_{5100, \text{Host}}$	43.09
Fe II/H $\beta$	0.45
Fe II/[O III]	2.92

## Quality Flags

spurious_hab/hbb	0/0
15100	0
balmer	0
balmer_snr	0
hb_width	0
balmer_width	0