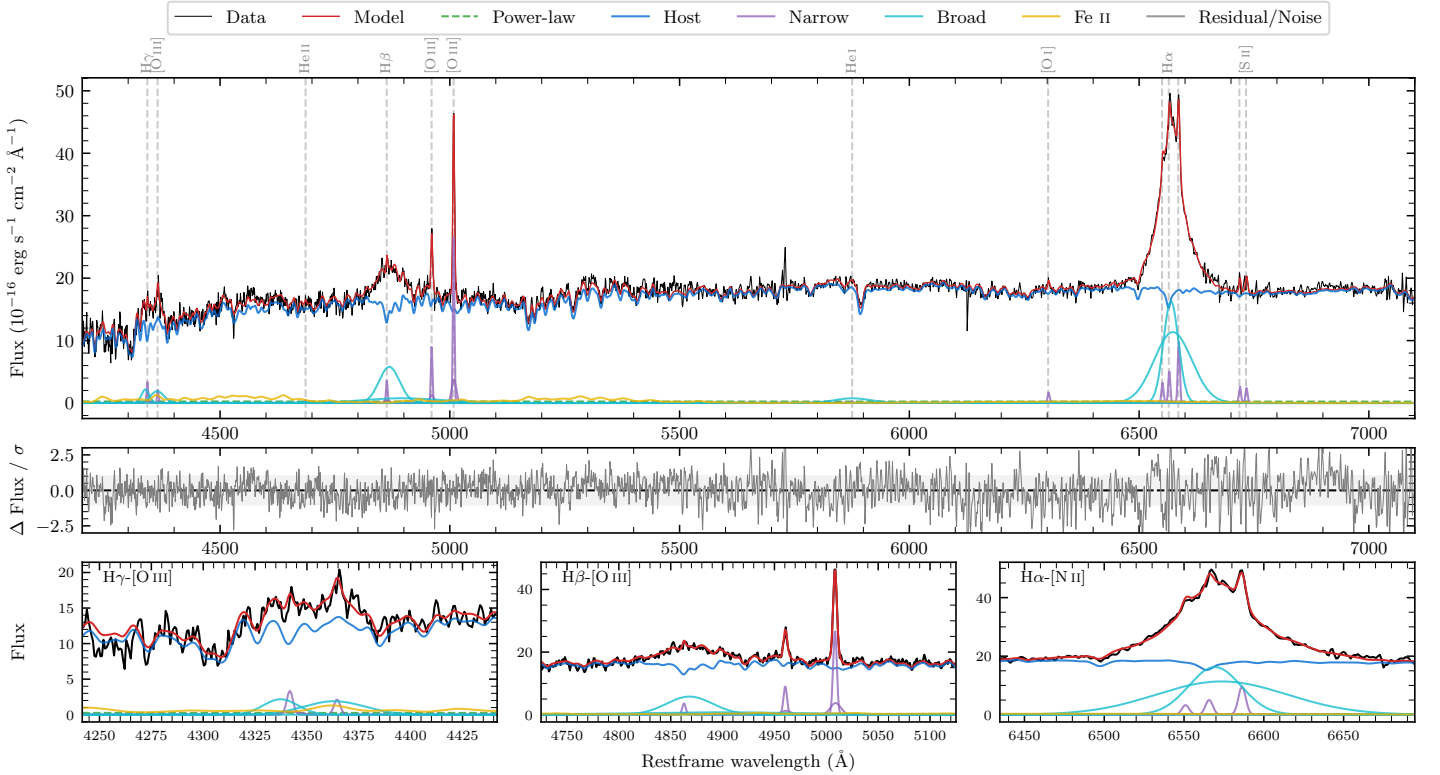
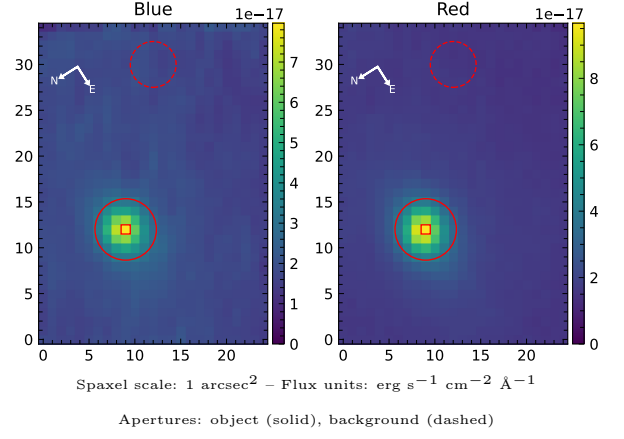


# ESO 25-2

Spectrum ID	484536288_sp1	Spectrum type	Sy 1.2
Alt name	g1854403-785354	Quality flag	good
$z$	0.0290	AGN reference	6dFGS
RA, Dec	283.6679, -78.8983	MW $E(B-V)$	0.136
MJD	59078.43	Power law $\alpha_\nu$	$-1.78 \pm 0.24$
SNR/ $\text{\AA}$ B/R	15.3/35.2	$\log L_{5100, \text{AGN}}$	$41.39 \pm 0.52$
Obs airmass	1.49	$\log H\beta_{\text{Br}}/[\text{O III}]$	$0.47 \pm 0.03$
SMSS ID	484536288	$\log M_{L5100}/M_\odot$	$6.87 \pm 0.23$
Neighbour	None $< 15''$	$\log M_{H\alpha}/M_\odot$	$6.99 \pm 0.03$
SMSS $\langle r_6''_{\text{ap}} \rangle$	$15.32 \pm 0.06$	$\log M_{H\beta}/M_\odot$	$7.46 \pm 0.05$
2MASS $K_{\text{ext}}$	$10.34 \pm 0.05$	$\log M_{[\text{O III}]} / M_\odot$	$7.36 \pm 0.05$



## Emission Line Measurements

Line	$\log L$ (erg s <sup>-1</sup> )	FWHM (km s <sup>-1</sup> )	$\sigma$ (km s <sup>-1</sup> )	EW (Å)
H $\gamma$ Narrow	$39.54 \pm 0.15$	$271 \pm 63$	$181 \pm 28$	$71.53 \pm 17.70$
<b>H<math>\gamma</math> Broad</b>	<b><math>40.36 \pm 0.07</math></b>	<b><math>3252 \pm 303</math></b>	<b><math>1042 \pm 31</math></b>	<b><math>465.84 \pm 33.43</math></b>
[O III] 4364	$39.21 \pm 0.23$	$247 \pm 63$	$104 \pm 25$	$33.20 \pm 10.21$
He II Narrow	$38.61 \pm 0.43$	$247 \pm 63$	$104 \pm 25$	$8.55 \pm 8.41$
<b>He II Broad</b>	—	—	—	—
H $\beta$ Narrow	$39.63 \pm 0.09$	$271 \pm 63$	$181 \pm 28$	$89.41 \pm 13.17$
<b>H<math>\beta</math> Broad</b>	<b><math>40.98 \pm 0.02</math></b>	<b><math>3505 \pm 81</math></b>	<b><math>1849 \pm 121</math></b>	<b><math>2014.73 \pm 57.67</math></b>
[O III] 5007	$40.52 \pm 0.01$	$271 \pm 63$	$181 \pm 28$	$692.75 \pm 14.11$
He I Narrow	$38.42 \pm 0.41$	$247 \pm 63$	$104 \pm 25$	$5.72 \pm 4.72$
<b>He I Broad</b>	<b><math>40.16 \pm 0.06</math></b>	<b><math>4570 \pm 73</math></b>	<b><math>1941 \pm 30</math></b>	<b><math>315.67 \pm 25.24</math></b>
[O I] 6300	$39.27 \pm 0.09$	$247 \pm 63$	$104 \pm 25$	$41.05 \pm 4.91$
H $\alpha$ Narrow	$39.76 \pm 0.04$	$247 \pm 63$	$104 \pm 25$	$129.60 \pm 6.04$
<b>H<math>\alpha</math> Broad</b>	<b><math>41.56 \pm 0.01</math></b>	<b><math>2387 \pm 66</math></b>	<b><math>1189 \pm 25</math></b>	<b><math>8159.75 \pm 24.62</math></b>
[N II] 6585	$40.04 \pm 0.02$	$247 \pm 63$	$104 \pm 25$	$248.03 \pm 5.89$
[S II] 6718	$39.49 \pm 0.06$	$247 \pm 63$	$104 \pm 25$	$69.82 \pm 5.81$
[S II] 6732	$39.45 \pm 0.06$	$247 \pm 63$	$104 \pm 25$	$63.79 \pm 5.50$

## Emission Summary

H $\alpha$ broad SNR	25.54
H $\beta$ broad SNR	6.04
H $\gamma$ broad SNR	2.46
AGN frac	0.02
Host frac	0.98
$\log L_{5100, \text{Host}}$	43.18
Fe II/H $\beta$	0.57
Fe II/[O III]	1.68

## Quality Flags

spurious_hab/hbb	0/0
15100	2
balmer	0
balmer_snr	1
hb_width	1
balmer_width	0