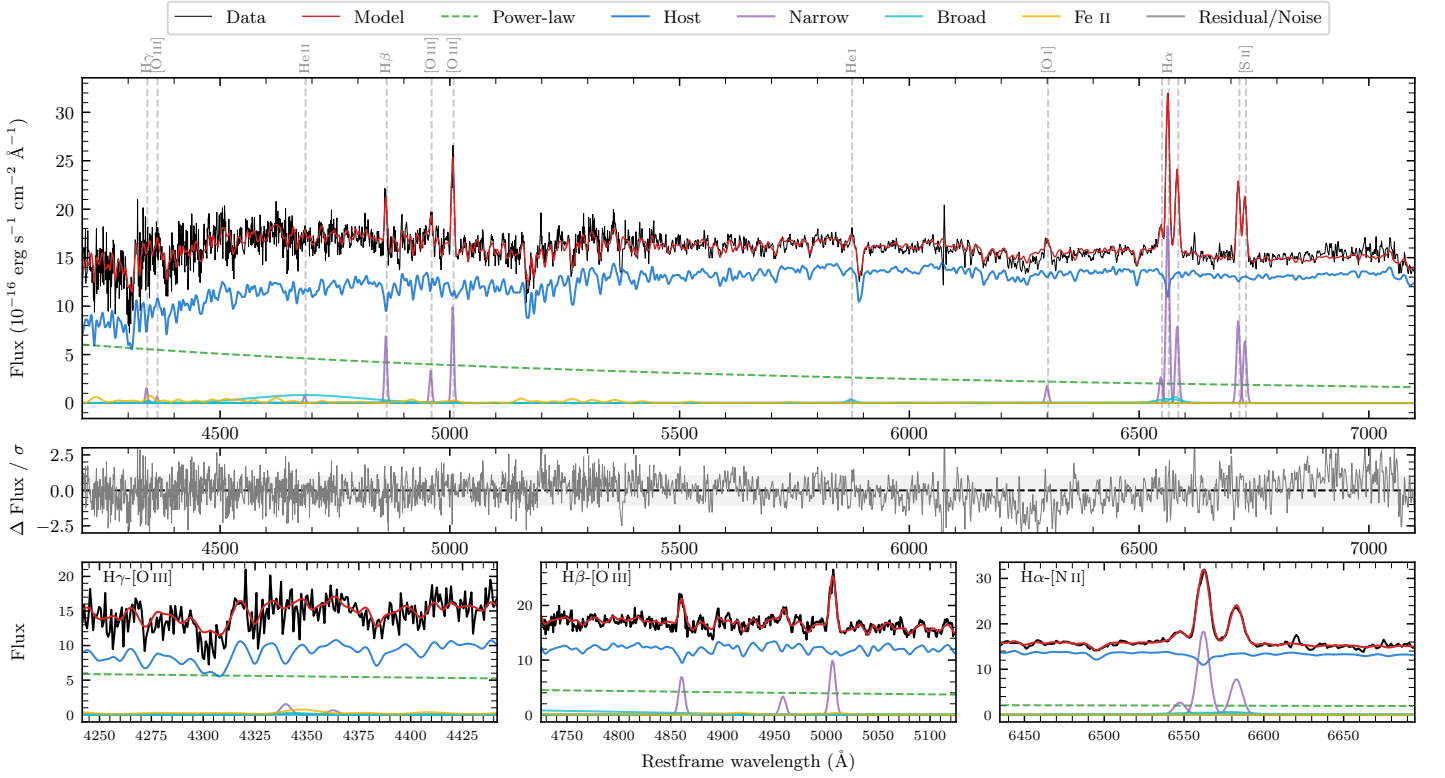
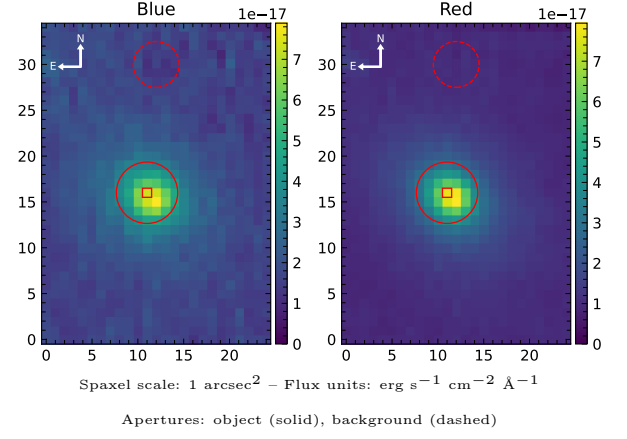


LEDA 810952

Spectrum ID	48357764_sp1	Spectrum type	Sy 2
Alt name	g0612037-223842	Quality flag	good
z	0.0372	AGN reference	6dFGS
RA, Dec	93.0154, -22.6451	MW $E(B - V)$	0.059
MJD	60266.69	Power law α_ν	0.48 ± 0.02
SNR/ \AA B/R	16.4/29.6	$\log L_{5100, \text{AGN}}$	42.79 ± 0.02
Obs airmass	1.01	$\log H\beta_{\text{Br}}/[\text{O III}]$	—
SMSS ID	48357764	$\log M_{L5100}/M_\odot$	—
Neighbour	14.0", 2080313194	$\log M_{H\alpha}/M_\odot$	—
SMSS $\langle r_{6''}^{\text{ap}} \rangle$	15.94 ± 0.04	$\log M_{H\beta}/M_\odot$	—
2MASS K_{ext}	11.85 ± 0.10	$\log M_{[\text{O III}]} / M_\odot$	—



Emission Line Measurements

Line	$\log L$ (erg s^{-1})	FWHM (km s^{-1})	σ (km s^{-1})	EW (\AA)
H γ Narrow	39.54 ± 0.27	404 ± 63	192 ± 32	1.84 ± 0.86
Hγ Broad	—	—	—	—
[O III] 4364	39.13 ± 0.41	398 ± 62	169 ± 25	0.75 ± 0.58
He II Narrow	39.22 ± 0.32	398 ± 62	169 ± 25	1.11 ± 0.57
He II Broad	40.92 ± 0.06	17661 ± 62	7500 ± 25	54.96 ± 4.03
H β Narrow	40.24 ± 0.04	404 ± 63	192 ± 32	12.36 ± 0.87
Hβ Broad	—	—	—	—
[O III] 5007	40.40 ± 0.03	404 ± 63	192 ± 32	19.55 ± 1.01
He I Narrow	39.09 ± 0.36	398 ± 62	169 ± 25	1.43 ± 0.58
He I Broad	39.46 ± 0.28	1179 ± 62	501 ± 25	3.35 ± 0.98
[O I] 6300	39.73 ± 0.07	398 ± 62	169 ± 25	7.38 ± 0.70
H α Narrow	40.76 ± 0.01	398 ± 62	169 ± 25	88.80 ± 0.85
Hα Broad	—	—	—	—
[N II] 6585	40.39 ± 0.02	398 ± 62	169 ± 25	38.25 ± 0.93
[S II] 6718	40.44 ± 0.02	398 ± 62	169 ± 25	44.34 ± 0.94
[S II] 6732	40.31 ± 0.02	398 ± 62	169 ± 25	33.51 ± 0.89

Emission Summary

H α broad SNR	0.97
H β broad SNR	0.00
H γ broad SNR	0.00
AGN frac	0.24
Host frac	0.76
$\log L_{5100, \text{Host}}$	43.29
Fe II/H β	—
Fe II/[O III]	1.15

Quality Flags

spurious_hab/hbb	0/0
15100	2
balmer	2
balmer_snr	2
hb_width	2
balmer_width	2