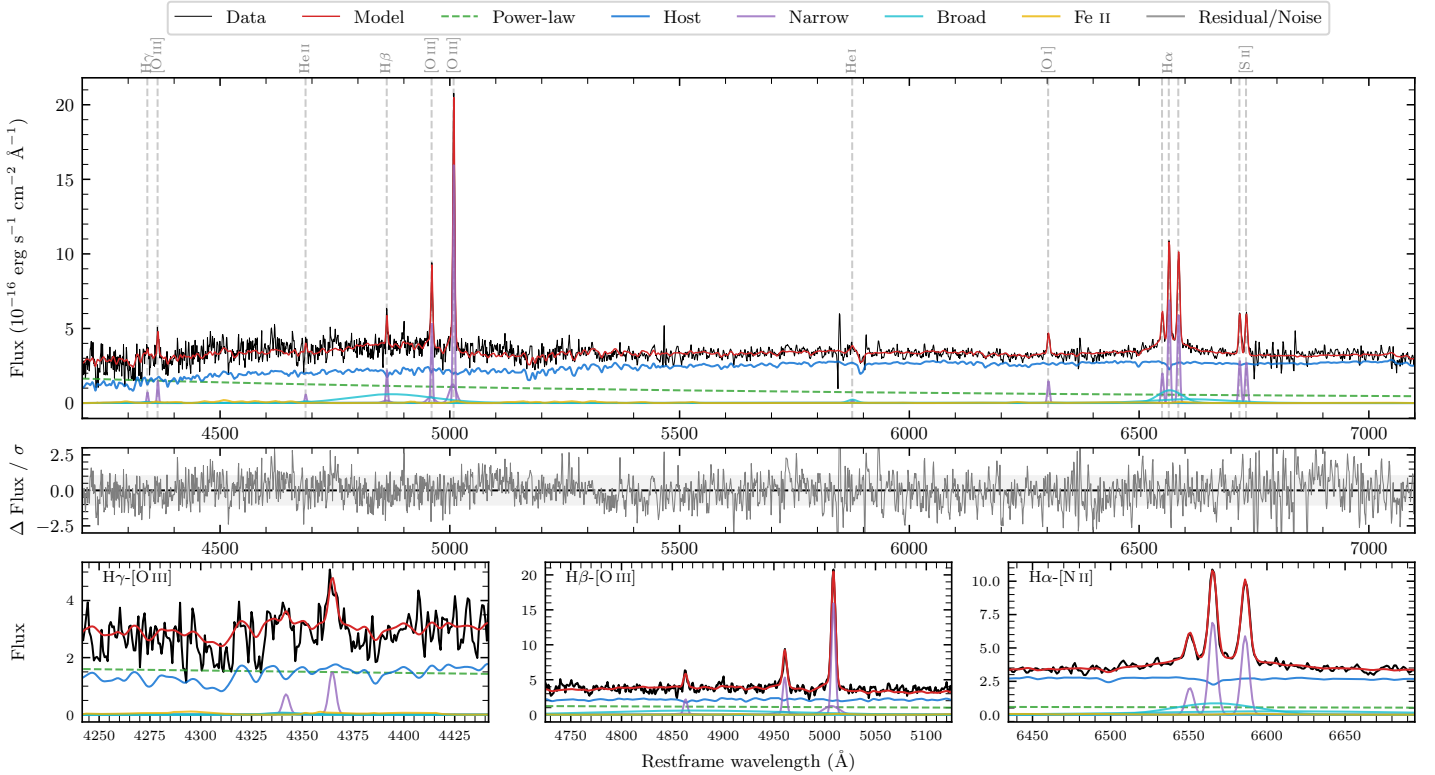
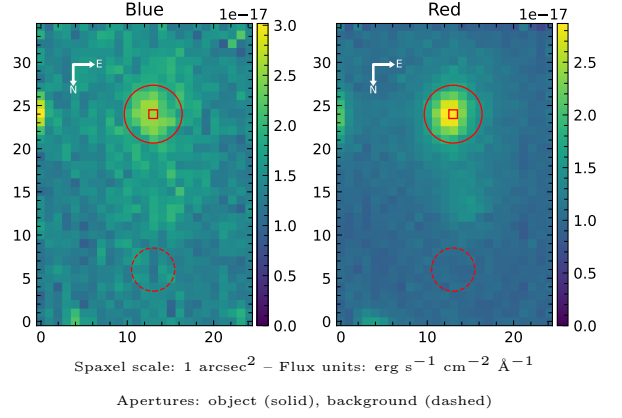


LEDA 246018

Spectrum ID	483325883_sp1	Spectrum type	Sy 1.5+
Alt name	g1912039-751022	Quality flag	good
z	0.0781	AGN reference	6dFGS
RA, Dec	288.0163, -75.1727	MW $E(B - V)$	0.052
MJD	60901.48	Power law α_ν	0.43 ± 0.08
SNR/ \AA B/R	6.9/15.5	$\log L_{5100, \text{AGN}}$	42.89 ± 0.03
Obs airmass	1.39	$\log H\beta_{\text{Br}}/[\text{O III}]$	< -0.45
SMSS ID	483325883	$\log M_{L5100}/M_\odot$	—
Neighbour	9.8", 483325882	$\log M_{\text{H}\alpha}/M_\odot$	7.10 ± 0.05
SMSS $\langle r_6'' \text{ap} \rangle$	17.36 ± 0.05	$\log M_{\text{H}\beta}/M_\odot$	—
2MASS K_{ext}	12.81 ± 0.14	$\log M_{[\text{O III}]} / M_\odot$	—



Emission Line Measurements

Line	$\log L$ (erg s^{-1})	FWHM (km s^{-1})	σ (km s^{-1})	EW (\AA)
H γ Narrow	39.80 ± 0.26	288 ± 63	249 ± 30	2.81 ± 1.56
Hγ Broad	—	—	—	—
[O III] 4364	40.01 ± 0.13	274 ± 62	116 ± 25	4.60 ± 0.83
He II Narrow	39.62 ± 0.29	274 ± 62	116 ± 25	2.22 ± 0.92
He II Broad	—	—	—	—
H β Narrow	40.34 ± 0.07	288 ± 63	249 ± 30	12.75 ± 1.93
Hβ Broad	< 40.76	—	—	—
[O III] 5007	41.21 ± 0.02	288 ± 63	249 ± 30	102.03 ± 2.18
He I Narrow	39.27 ± 0.34	274 ± 62	116 ± 25	1.71 ± 0.74
He I Broad	39.98 ± 0.15	1256 ± 63	533 ± 25	8.88 ± 1.92
[O I] 6300	40.16 ± 0.04	274 ± 62	116 ± 25	15.84 ± 0.82
H α Narrow	40.85 ± 0.01	274 ± 62	116 ± 25	86.35 ± 1.10
Hα Broad	41.25 ± 0.03	3344 ± 131	1995 ± 81	218.46 ± 6.94
[N II] 6585	40.78 ± 0.01	274 ± 62	116 ± 25	73.55 ± 1.40
[S II] 6718	40.47 ± 0.04	274 ± 62	116 ± 25	37.86 ± 1.65
[S II] 6732	40.45 ± 0.03	274 ± 62	116 ± 25	36.62 ± 1.40

Emission Summary

H α broad SNR	2.28
H β broad SNR	0.00
H γ broad SNR	0.00
AGN frac	0.33
Host frac	0.67
$\log L_{5100, \text{Host}}$	43.20
Fe II/H β	—
Fe II/[O III]	—

Quality Flags

spurious_hab/hbb	0/1
15100	2
balmer	2
balmer_snr	2
hb_width	2
balmer_width	2