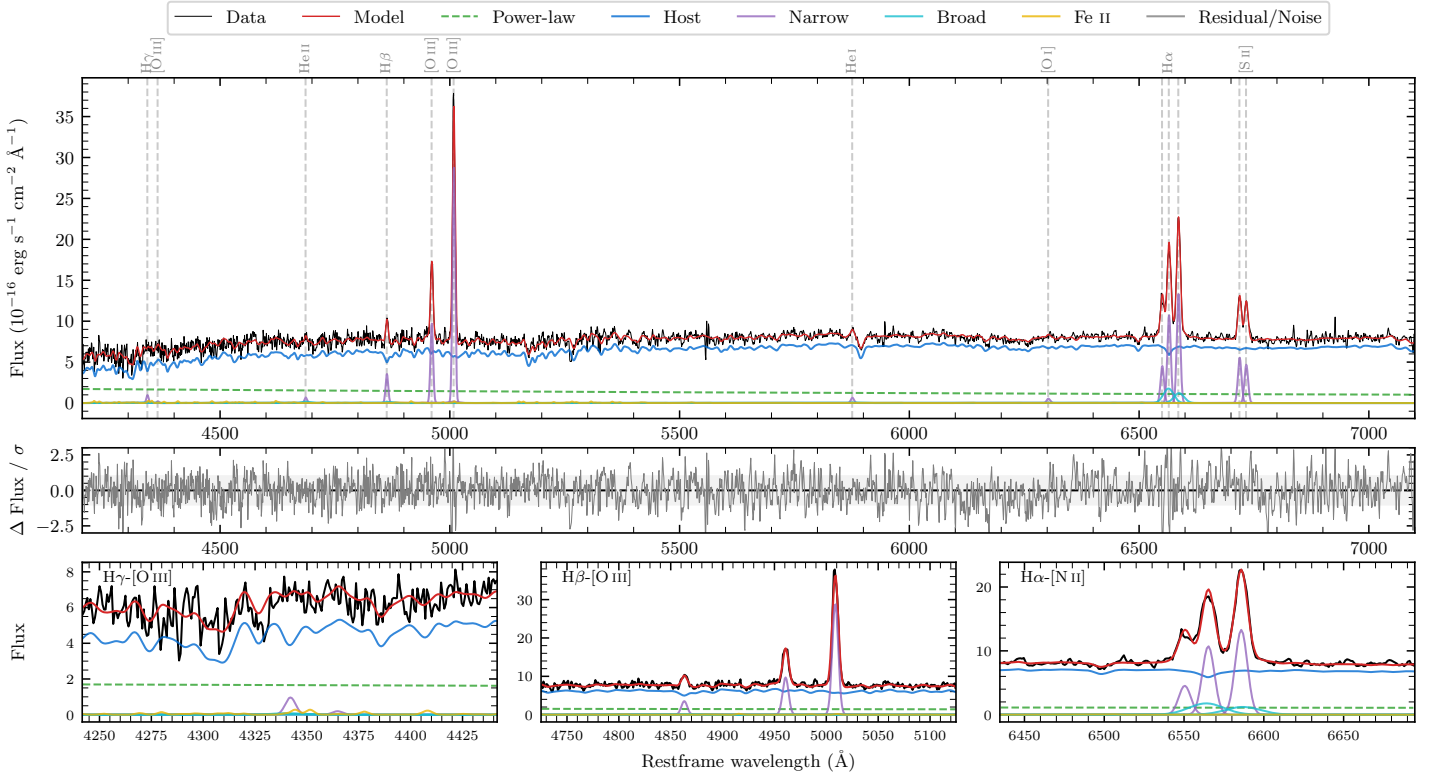
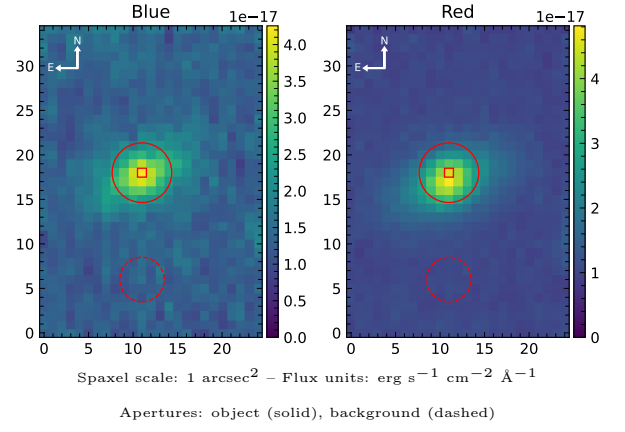


# 6dFGS gJ061514.0–240536

Spectrum ID	48228323_sp1	Spectrum type	Sy 2
Alt name	g0615140–240536	Quality flag	good
$z$	0.0604	AGN reference	6dFGS
RA, Dec	93.8083, –24.0932	MW $E(B - V)$	0.029
MJD	60996.7	Power law $\alpha_\nu$	$-1.01 \pm 0.24$
SNR/Å B/R	12.7/24.2	$\log L_{5100, \text{AGN}}$	$42.80 \pm 0.05$
Obs airmass	1.01	$\log H\beta_{\text{Br}}/[\text{O III}]$	–
SMSS ID	48228323	$\log M_{L5100}/M_\odot$	–
Neighbour	14.8", 1057940802	$\log M_{\text{H}\alpha}/M_\odot$	–
SMSS $\langle r_6^{\text{ap}} \rangle$	$16.26 \pm 0.04$	$\log M_{\text{H}\beta}/M_\odot$	–
2MASS $K_{\text{ext}}$	$12.42 \pm 0.08$	$\log M_{[\text{O III}]} / M_\odot$	–



## Emission Line Measurements

Line	$\log L$ ( $\text{erg s}^{-1}$ )	FWHM ( $\text{km s}^{-1}$ )	$\sigma$ ( $\text{km s}^{-1}$ )	EW ( $\text{Angstrom}$ )
H $\gamma$ Narrow	$39.76 \pm 0.23$	$412 \pm 62$	$186 \pm 28$	$3.95 \pm 1.66$
<b>H<math>\gamma</math> Broad</b>	–	–	–	–
[O III] 4364	–	–	–	–
He II Narrow	$39.63 \pm 0.27$	$406 \pm 62$	$173 \pm 25$	$3.16 \pm 1.00$
<b>He II Broad</b>	<b><math>39.52 \pm 0.46</math></b>	<b><math>1231 \pm 62</math></b>	<b><math>523 \pm 25</math></b>	<b><math>2.46 \pm 1.74</math></b>
H $\beta$ Narrow	$40.37 \pm 0.06$	$412 \pm 62$	$187 \pm 28$	$18.12 \pm 1.61$
<b>H<math>\beta</math> Broad</b>	–	–	–	–
[O III] 5007	$41.30 \pm 0.01$	$412 \pm 62$	$187 \pm 28$	$157.07 \pm 1.94$
He I Narrow	$39.71 \pm 0.14$	$406 \pm 62$	$173 \pm 25$	$4.74 \pm 0.83$
<b>He I Broad</b>	–	–	–	–
[O I] 6300	$39.66 \pm 0.13$	$406 \pm 62$	$173 \pm 25$	$4.55 \pm 0.78$
H $\alpha$ Narrow	$41.09 \pm 0.01$	$406 \pm 62$	$173 \pm 25$	$97.86 \pm 1.15$
<b>H<math>\alpha</math> Broad</b>	–	–	–	–
[N II] 6585	$41.18 \pm 0.01$	$406 \pm 62$	$173 \pm 25$	$122.00 \pm 1.07$
[S II] 6718	$40.70 \pm 0.01$	$406 \pm 62$	$173 \pm 25$	$53.06 \pm 0.95$
[S II] 6732	$40.62 \pm 0.02$	$406 \pm 62$	$173 \pm 25$	$44.91 \pm 0.99$

## Emission Summary

H $\alpha$ broad SNR	0.00
H $\beta$ broad SNR	0.00
H $\gamma$ broad SNR	0.00
AGN frac	0.19
Host frac	0.81
$\log L_{5100, \text{Host}}$	43.42
Fe II/H $\beta$	–
Fe II/[O III]	0.09

## Quality Flags

spurious_hab/hbb	1/0
15100	2
balmer	2
balmer_snr	2
hb_width	2
balmer_width	2