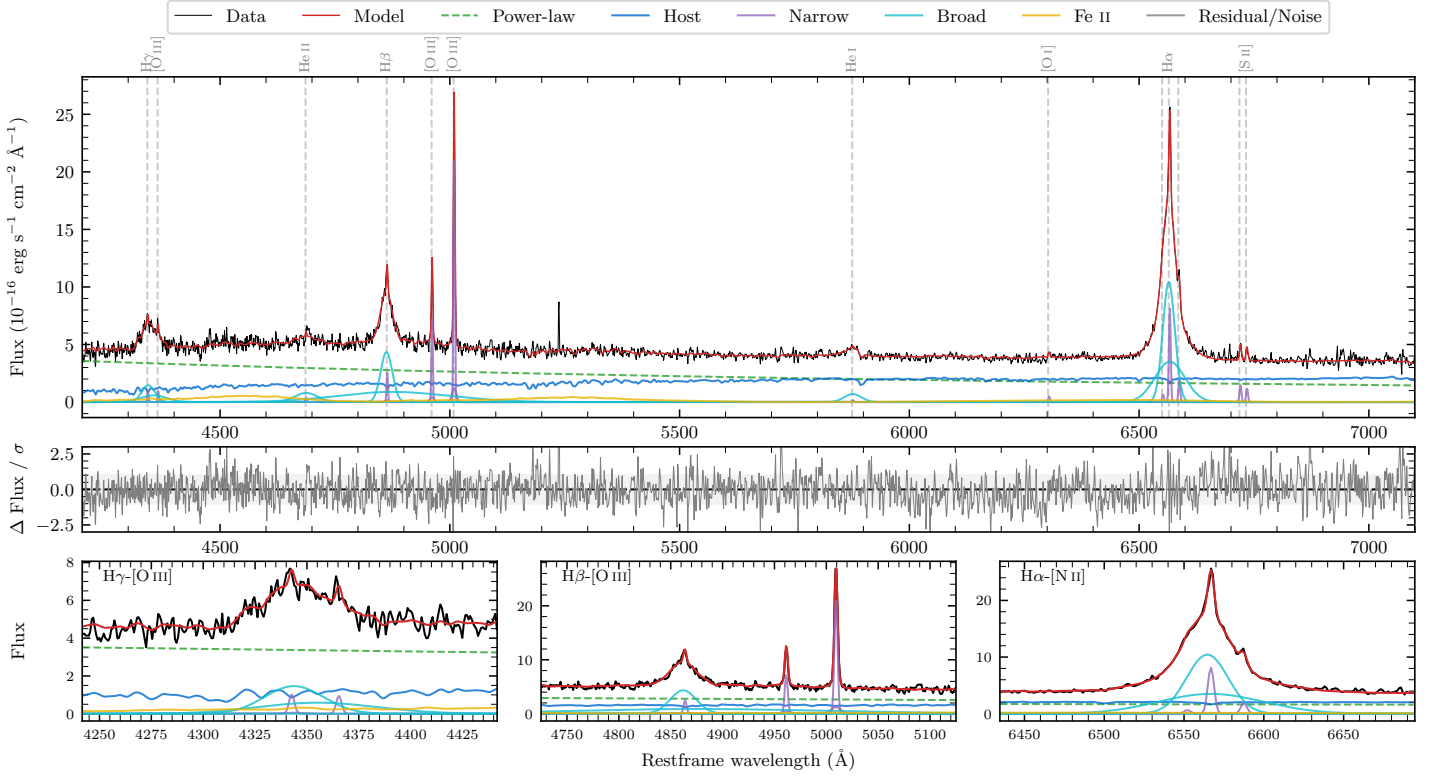
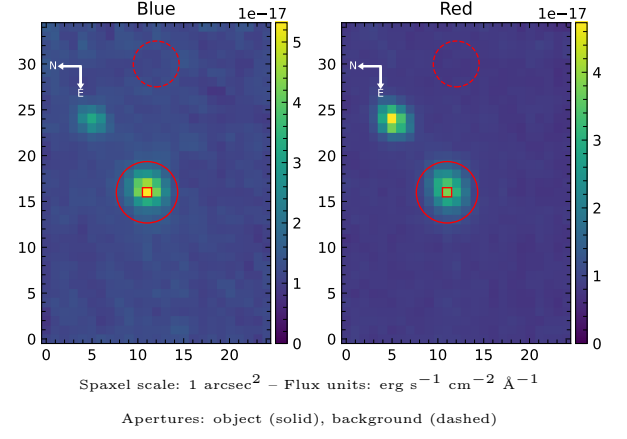


6dFGS gJ202639.4–560904

Spectrum ID	481921398_sp1	Spectrum type	Sy 1.5
Alt name	g2026394–560904	Quality flag	good
z	0.0966	AGN reference	6dFGS
RA, Dec	306.6636, –56.1512	MW $E(B - V)$	0.059
MJD	60164.55	Power law α_ν	-0.28 ± 0.15
SNR/Å B/R	13.5/17.2	$\log L_{5100, \text{AGN}}$	43.48 ± 0.03
Obs airmass	1.10	$\log H\beta_{\text{Br}}/[\text{O III}]$	0.16 ± 0.24
SMSS ID	481921398	$\log M_{L5100}/M_\odot$	7.21 ± 0.03
Neighbour	9.4", 481921397	$\log M_{\text{H}\alpha}/M_\odot$	7.08 ± 0.03
SMSS $\langle r_{6''}^{\text{ap}} \rangle$	17.20 ± 0.07	$\log M_{\text{H}\beta}/M_\odot$	7.16 ± 0.13
2MASS K_{ext}	nan \pm nan	$\log M_{[\text{O III}]} / M_\odot$	7.23 ± 0.03



Emission Line Measurements

Line	$\log L$ (erg s ⁻¹)	FWHM (km s ⁻¹)	σ (km s ⁻¹)	EW (Å)
H γ Narrow	40.01 ± 0.15	226 ± 63	140 ± 29	1.28 ± 0.39
Hγ Broad	41.38 ± 0.03	2734 ± 213	1175 ± 98	30.49 ± 1.13
[O III] 4364	39.90 ± 0.17	215 ± 63	90 ± 25	1.01 ± 0.24
He II Narrow	39.58 ± 0.28	215 ± 63	90 ± 25	0.55 ± 0.24
He II Broad	–	–	–	–
H β Narrow	40.45 ± 0.06	226 ± 63	140 ± 29	4.32 ± 0.48
Hβ Broad	$41.55^{+0.47}_{-0.01}$	1840 ± 57	677 ± 29	54.53 ± 0.86
[O III] 5007	41.39 ± 0.01	226 ± 63	140 ± 29	39.76 ± 0.55
He I Narrow	39.27 ± 0.34	215 ± 63	90 ± 25	0.40 ± 0.22
He I Broad	40.92 ± 0.03	2203 ± 127	935 ± 53	17.73 ± 0.81
[O I] 6300	39.78 ± 0.11	215 ± 63	90 ± 25	1.44 ± 0.29
H α Narrow	41.01 ± 0.02	215 ± 63	90 ± 25	26.57 ± 0.42
Hα Broad	42.21 ± 0.01	1664 ± 65	797 ± 25	417.31 ± 1.52
[N II] 6585	40.38 ± 0.04	215 ± 63	90 ± 25	6.24 ± 0.32
[S II] 6718	40.28 ± 0.04	215 ± 63	90 ± 25	5.17 ± 0.41
[S II] 6732	40.18 ± 0.05	215 ± 63	90 ± 25	4.09 ± 0.31

Emission Summary

H α broad SNR	38.58
H β broad SNR	12.04
H γ broad SNR	5.53
AGN frac	0.62
Host frac	0.38
$\log L_{5100, \text{Host}}$	43.28
Fe II/H β	–
Fe II/[O III]	–

Quality Flags

spurious_hab/hbb	0/1
15100	0
balmer	0
balmer_snr	0
hb_width	0
balmer_width	0