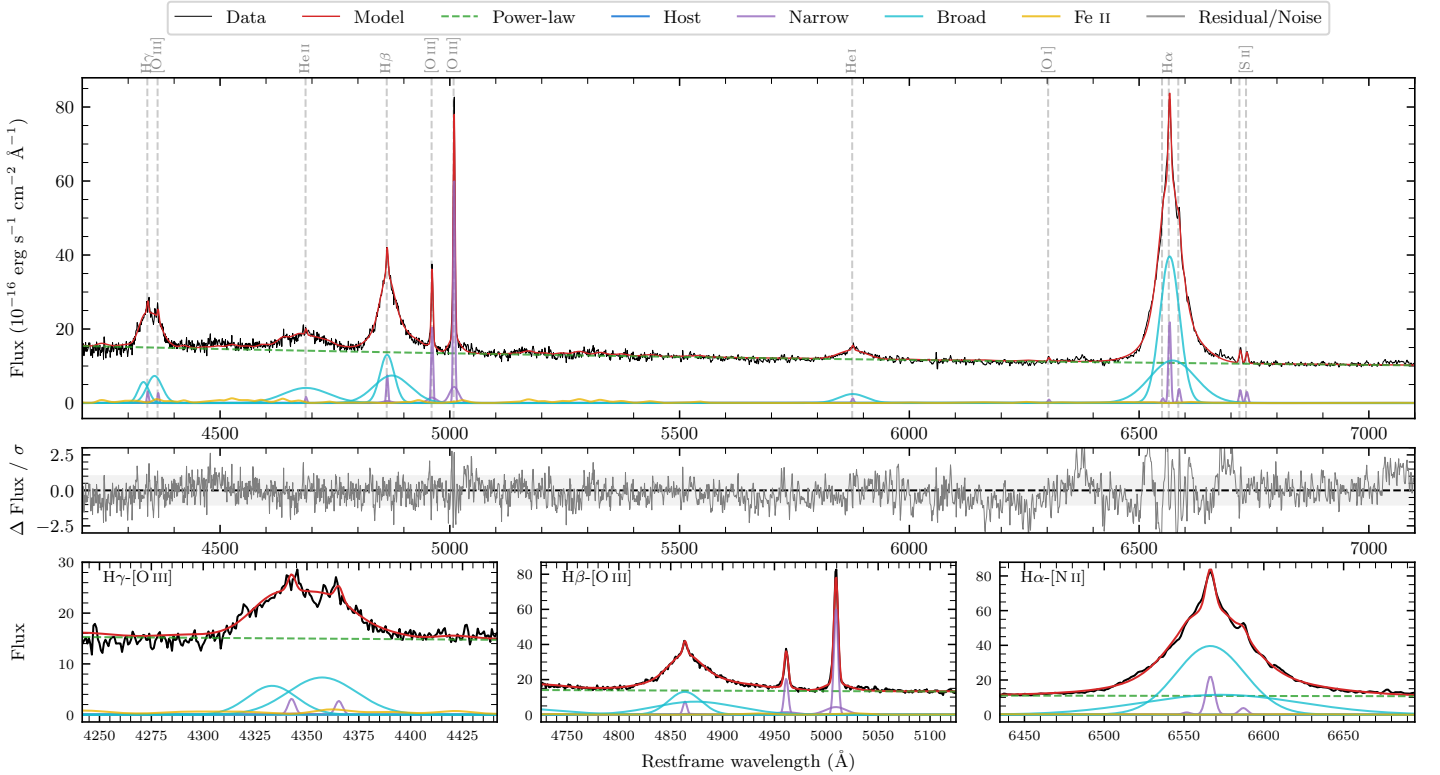
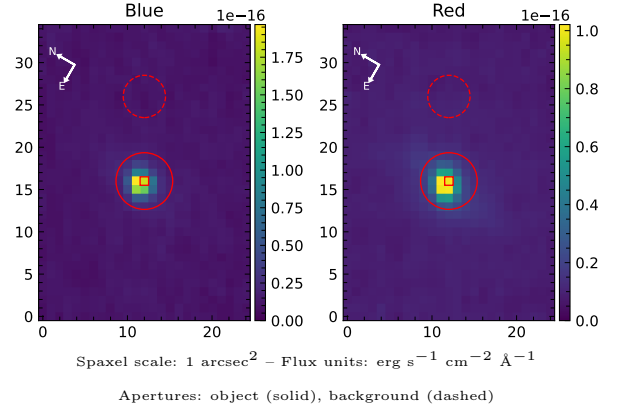


# LEDA 89057

Spectrum ID	481135279_sp1	Spectrum type	Sy 1.2
Alt name	g1938044-510950	Quality flag	good
$z$	0.0403	AGN reference	6dFGS
RA, Dec	294.5183, -51.1637	MW $E(B - V)$	0.053
MJD	60165.52	Power law $\alpha_\nu$	$-1.21 \pm 0.02$
SNR/ $\text{\AA}$ B/R	13.7/20.6	$\log L_{5100, \text{AGN}}$	$43.40 \pm 0.01$
Obs airmass	1.06	$\log H\beta_{\text{Br}}/[\text{O III}]$	$0.48 \pm 0.01$
SMSS ID	481135279	$\log M_{L5100}/M_\odot$	$7.60 \pm 0.03$
Neighbour	None $< 15''$	$\log M_{\text{H}\alpha}/M_\odot$	$7.44 \pm 0.02$
SMSS $\langle r_6'' \text{ap} \rangle$	$15.68 \pm 0.17$	$\log M_{\text{H}\beta}/M_\odot$	$7.64 \pm 0.03$
2MASS $K_{\text{ext}}$	$11.63 \pm 0.12$	$\log M_{[\text{O III}]} / M_\odot$	$7.57 \pm 0.03$



## Emission Line Measurements

Line	$\log L$ ( $\text{erg s}^{-1}$ )	FWHM ( $\text{km s}^{-1}$ )	$\sigma$ ( $\text{km s}^{-1}$ )	EW ( $\text{\AA}$ )
H $\gamma$ Narrow	$39.86 \pm 0.15$	$304 \pm 63$	$320 \pm 28$	$1.29 \pm 0.40$
<b>H<math>\gamma</math> Broad</b>	<b><math>41.27 \pm 0.02</math></b>	<b><math>3518 \pm 115</math></b>	<b><math>1155 \pm 36</math></b>	<b><math>32.66 \pm 0.59</math></b>
[O III] 4364	$39.67 \pm 0.17$	$285 \pm 63$	$121 \pm 25$	$0.83 \pm 0.18$
He II Narrow	$39.48 \pm 0.20$	$285 \pm 63$	$121 \pm 25$	$0.57 \pm 0.17$
<b>He II Broad</b>	<b><math>41.29 \pm 0.02</math></b>	<b><math>7409 \pm 195</math></b>	<b><math>3146 \pm 82</math></b>	<b><math>37.09 \pm 0.90</math></b>
H $\beta$ Narrow	$40.29 \pm 0.06$	$304 \pm 63$	$321 \pm 28$	$3.76 \pm 0.38$
<b>H<math>\beta</math> Broad</b>	<b><math>41.69 \pm 0.01</math></b>	<b><math>2990 \pm 83</math></b>	<b><math>1492 \pm 36</math></b>	<b><math>94.42 \pm 0.80</math></b>
[O III] 5007	$41.21 \pm 0.01$	$304 \pm 63$	$321 \pm 28$	$32.34 \pm 0.39$
He I Narrow	$39.47 \pm 0.13$	$285 \pm 63$	$121 \pm 25$	$0.67 \pm 0.12$
<b>He I Broad</b>	<b><math>40.85 \pm 0.02</math></b>	<b><math>3532 \pm 135</math></b>	<b><math>1500 \pm 57</math></b>	<b><math>15.81 \pm 0.42</math></b>
[O I] 6300	$39.37 \pm 0.15$	$285 \pm 63$	$121 \pm 25$	$0.55 \pm 0.12$
H $\alpha$ Narrow	$40.76 \pm 0.02$	$285 \pm 63$	$121 \pm 25$	$14.16 \pm 0.24$
<b>H<math>\alpha</math> Broad</b>	<b><math>42.14 \pm 0.01</math></b>	<b><math>2649 \pm 66</math></b>	<b><math>1188 \pm 25</math></b>	<b><math>342.23 \pm 0.68</math></b>
[N II] 6585	$40.00 \pm 0.06$	$285 \pm 63$	$121 \pm 25$	$2.46 \pm 0.20$
[S II] 6718	$39.96 \pm 0.04$	$285 \pm 63$	$121 \pm 25$	$2.31 \pm 0.14$
[S II] 6732	$39.90 \pm 0.04$	$285 \pm 63$	$121 \pm 25$	$2.01 \pm 0.14$

## Emission Summary

H $\alpha$ broad SNR	46.85
H $\beta$ broad SNR	18.50
H $\gamma$ broad SNR	8.45
AGN frac	1.00
Host frac	0.00
$\log L_{5100, \text{Host}}$	40.85
Fe II/H $\beta$	0.17
Fe II/[O III]	0.52

## Quality Flags

spurious_hab/hbb	0/0
15100	0
balmer	0
balmer_snr	0
hb_width	0
balmer_width	0