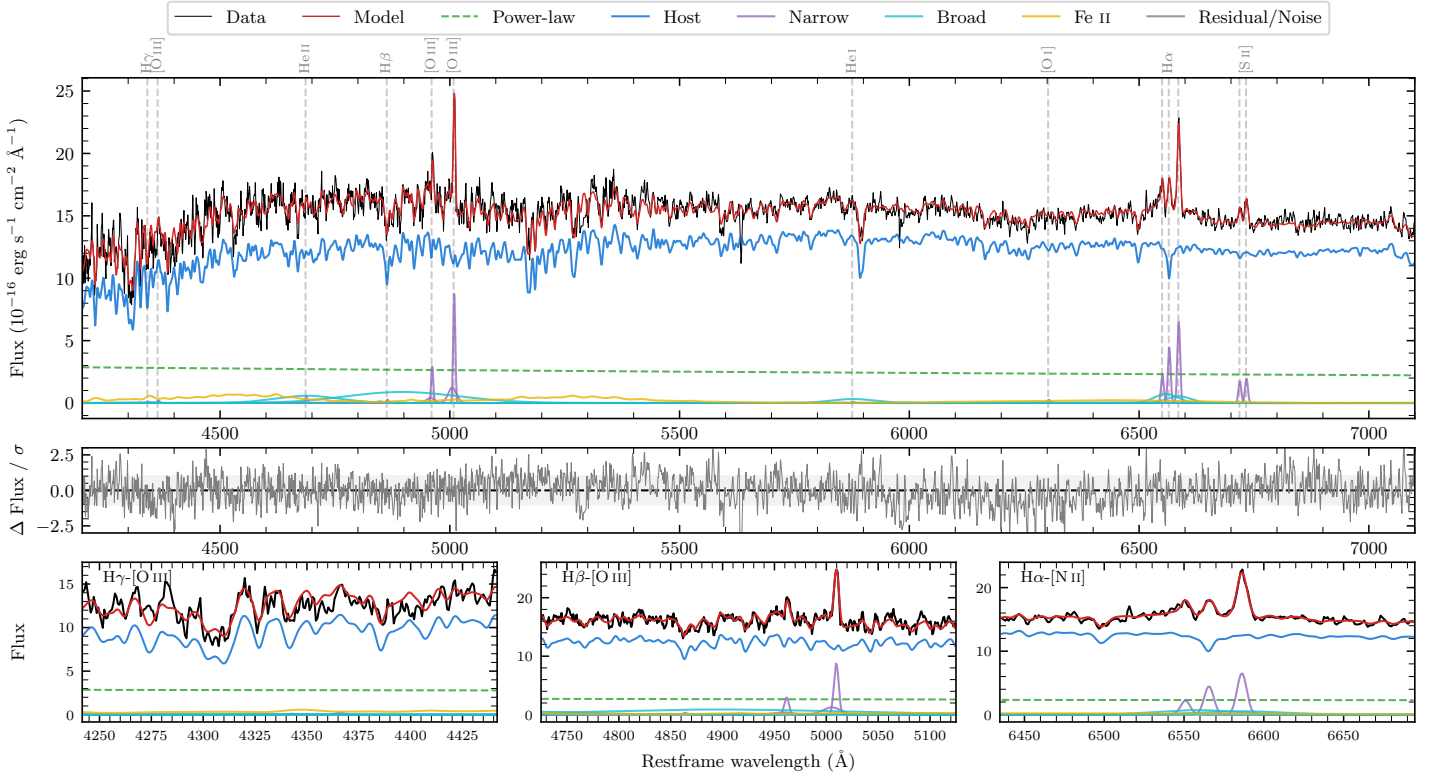
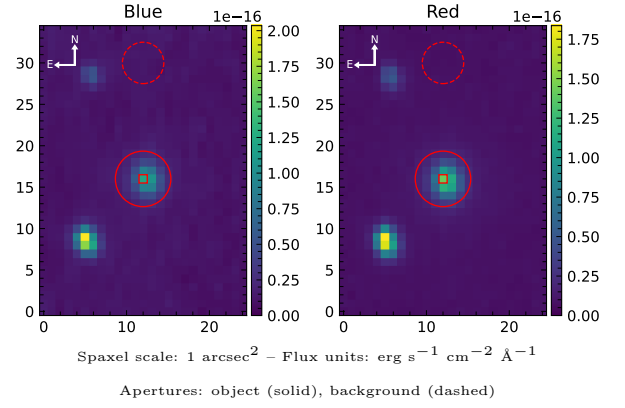


# LEDA 488003

Spectrum ID	480084365_sp1	Spectrum type	Sy 1.5+
Alt name	g1916086-482246	Quality flag	good
$z$	0.0545	AGN reference	6dFGS
RA, Dec	289.0359, -48.3794	MW $E(B-V)$	0.064
MJD	60165.47	Power law $\alpha_\nu$	$-1.52 \pm 0.07$
SNR/ $\text{\AA}$ B/R	19.9/36.0	$\log L_{5100, \text{AGN}}$	$42.97 \pm 0.03$
Obs airmass	1.06	$\log H\beta_{\text{Br}}/[\text{O III}]$	$< -0.28$
SMSS ID	480084365	$\log M_{L5100}/M_\odot$	—
Neighbour	6.1", 2684447120	$\log M_{H\alpha}/M_\odot$	$6.78 \pm 0.06$
SMSS $\langle r_{6''}^{\text{ap}} \rangle$	$15.48 \pm 0.02$	$\log M_{H\beta}/M_\odot$	—
2MASS $K_{\text{ext}}$	$12.07 \pm 0.07$	$\log M_{[\text{O III}]} / M_\odot$	—



## Emission Line Measurements

Line	$\log L$ (erg s $^{-1}$ )	FWHM (km s $^{-1}$ )	$\sigma$ (km s $^{-1}$ )	EW (Angstroms)
H $\gamma$ Narrow	—	—	—	—
<b>H<math>\gamma</math> Broad</b>	—	—	—	—
[O III] 4364	—	—	—	—
He II Narrow	$39.33 \pm 0.36$	$325 \pm 62$	$137 \pm 25$	$1.13 \pm 0.69$
<b>He II Broad</b>	—	—	—	—
H $\beta$ Narrow	—	—	—	—
<b>H<math>\beta</math> Broad</b>	$< 40.48$	—	—	—
[O III] 5007	$40.76 \pm 0.03$	$353 \pm 63$	$358 \pm 36$	$31.38 \pm 1.33$
He I Narrow	—	—	—	—
<b>He I Broad</b>	$40.45 \pm 0.10$	$5688 \pm 62$	$2415 \pm 25$	$16.65 \pm 1.98$
[O I] 6300	$39.15 \pm 0.33$	$325 \pm 62$	$137 \pm 25$	$0.87 \pm 0.43$
H $\alpha$ Narrow	$40.40 \pm 0.03$	$325 \pm 62$	$137 \pm 25$	$15.39 \pm 0.53$
<b>H<math>\alpha</math> Broad</b>	$40.78 \pm 0.04$	$3236 \pm 76$	$1177 \pm 25$	$37.57 \pm 1.57$
[N II] 6585	$40.56 \pm 0.02$	$325 \pm 62$	$137 \pm 25$	$22.55 \pm 0.53$
[S II] 6718	$40.00 \pm 0.06$	$325 \pm 62$	$137 \pm 25$	$6.23 \pm 0.49$
[S II] 6732	$40.05 \pm 0.05$	$325 \pm 62$	$137 \pm 25$	$7.03 \pm 0.50$

## Emission Summary

H $\alpha$ broad SNR	1.48
H $\beta$ broad SNR	0.00
H $\gamma$ broad SNR	0.00
AGN frac	0.18
Host frac	0.82
$\log L_{5100, \text{Host}}$	43.62
Fe II/H $\beta$	—
Fe II/[O III]	—

## Quality Flags

spurious_hab/hbb	0/2
15100	2
balmer	2
balmer_snr	2
hb_width	2
balmer_width	2