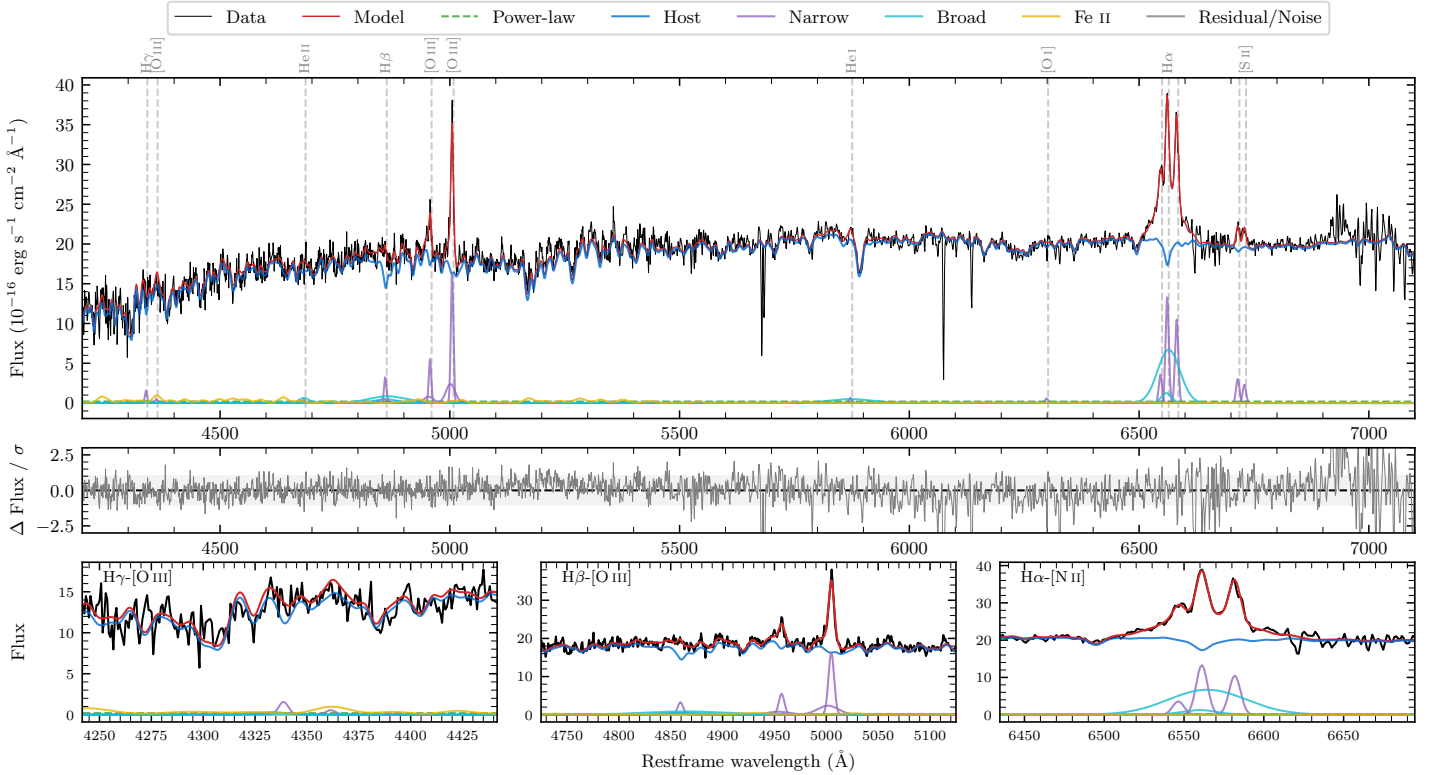
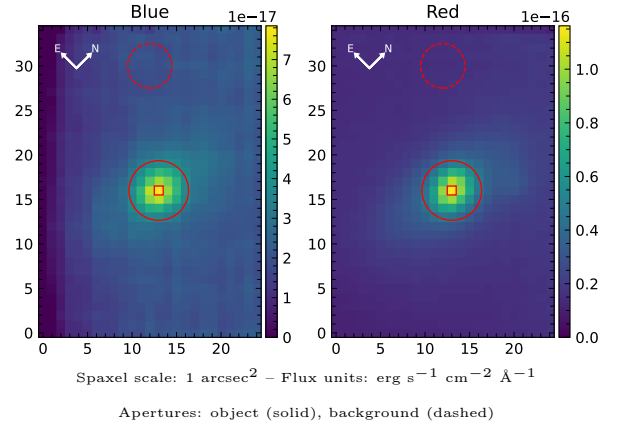


# LEDA 374930

Spectrum ID	479331885_sp1	Spectrum type	Sy 1.5+
Alt name	g1921494-585831	Quality flag	good
$z$	0.0364	AGN reference	6dFGS
RA, Dec	290.4557, -58.9752	MW $E(B - V)$	0.120
MJD	60450.78	Power law $\alpha_\nu$	$-1.87 \pm 0.12$
SNR/ $\text{\AA}$ B/R	10.7/26.3	$\log L_{5100, \text{AGN}}$	$41.49 \pm 0.64$
Obs airmass	1.16	$\log H\beta_{\text{Br}}/[\text{O III}]$	$< -0.32$
SMSS ID	479331885	$\log M_{L5100}/M_\odot$	—
Neighbour	None $< 15''$	$\log M_{\text{H}\alpha}/M_\odot$	$6.74 \pm 0.07$
SMSS $\langle r_6 \rangle_{\text{ap}}$	$15.46 \pm 0.02$	$\log M_{\text{H}\beta}/M_\odot$	—
2MASS $K_{\text{ext}}$	$10.88 \pm 0.04$	$\log M_{[\text{O III}]} / M_\odot$	—



## Emission Line Measurements

Line	$\log L$ ( $\text{erg s}^{-1}$ )	FWHM ( $\text{km s}^{-1}$ )	$\sigma$ ( $\text{km s}^{-1}$ )	EW ( $\text{\AA}$ )
H $\gamma$ Narrow	$39.67 \pm 0.34$	$421 \pm 64$	$390 \pm 41$	$76.14 \pm 51.33$
<b>H<math>\gamma</math> Broad</b>	—	—	—	—
[O III] 4364	—	—	—	—
He II Narrow	—	—	—	—
<b>He II Broad</b>	<b><math>39.77 \pm 0.35</math></b>	<b><math>1670 \pm 62</math></b>	<b><math>709 \pm 25</math></b>	<b><math>95.81 \pm 46.92</math></b>
H $\beta$ Narrow	$40.04 \pm 0.14$	$421 \pm 64$	$390 \pm 41$	$180.42 \pm 39.65$
<b>H<math>\beta</math> Broad</b>	$< 40.43$	—	—	—
[O III] 5007	$40.75 \pm 0.03$	$421 \pm 64$	$390 \pm 41$	$937.12 \pm 40.47$
He I Narrow	$39.24 \pm 0.29$	$383 \pm 62$	$162 \pm 25$	$29.35 \pm 12.10$
<b>He I Broad</b>	<b><math>40.28 \pm 0.13</math></b>	<b><math>5574 \pm 62</math></b>	<b><math>2367 \pm 25</math></b>	<b><math>322.75 \pm 47.99</math></b>
[O I] 6300	$39.21 \pm 0.31$	$383 \pm 62$	$162 \pm 25$	$27.72 \pm 11.66$
H $\alpha$ Narrow	$40.60 \pm 0.02$	$383 \pm 62$	$162 \pm 25$	$671.68 \pm 12.56$
<b>H<math>\alpha</math> Broad</b>	<b><math>41.17 \pm 0.02</math></b>	<b><math>2353 \pm 152</math></b>	<b><math>920 \pm 26</math></b>	<b><math>2512.74 \pm 34.03</math></b>
[N II] 6585	$40.49 \pm 0.02$	$383 \pm 62$	$162 \pm 25$	$531.14 \pm 13.55$
[S II] 6718	$39.96 \pm 0.06$	$383 \pm 62$	$162 \pm 25$	$157.64 \pm 13.11$
[S II] 6732	$39.85 \pm 0.08$	$383 \pm 62$	$162 \pm 25$	$119.77 \pm 12.29$

## Emission Summary

H $\alpha$ broad SNR	4.86
H $\beta$ broad SNR	0.88
H $\gamma$ broad SNR	0.00
AGN frac	0.01
Host frac	0.99
$\log L_{5100, \text{Host}}$	43.44
Fe II/H $\beta$	—
Fe II/[O III]	0.69

## Quality Flags

spurious_hab/hbb	0/0
15100	2
balmer	2
balmer_snr	2
hb_width	2
balmer_width	2