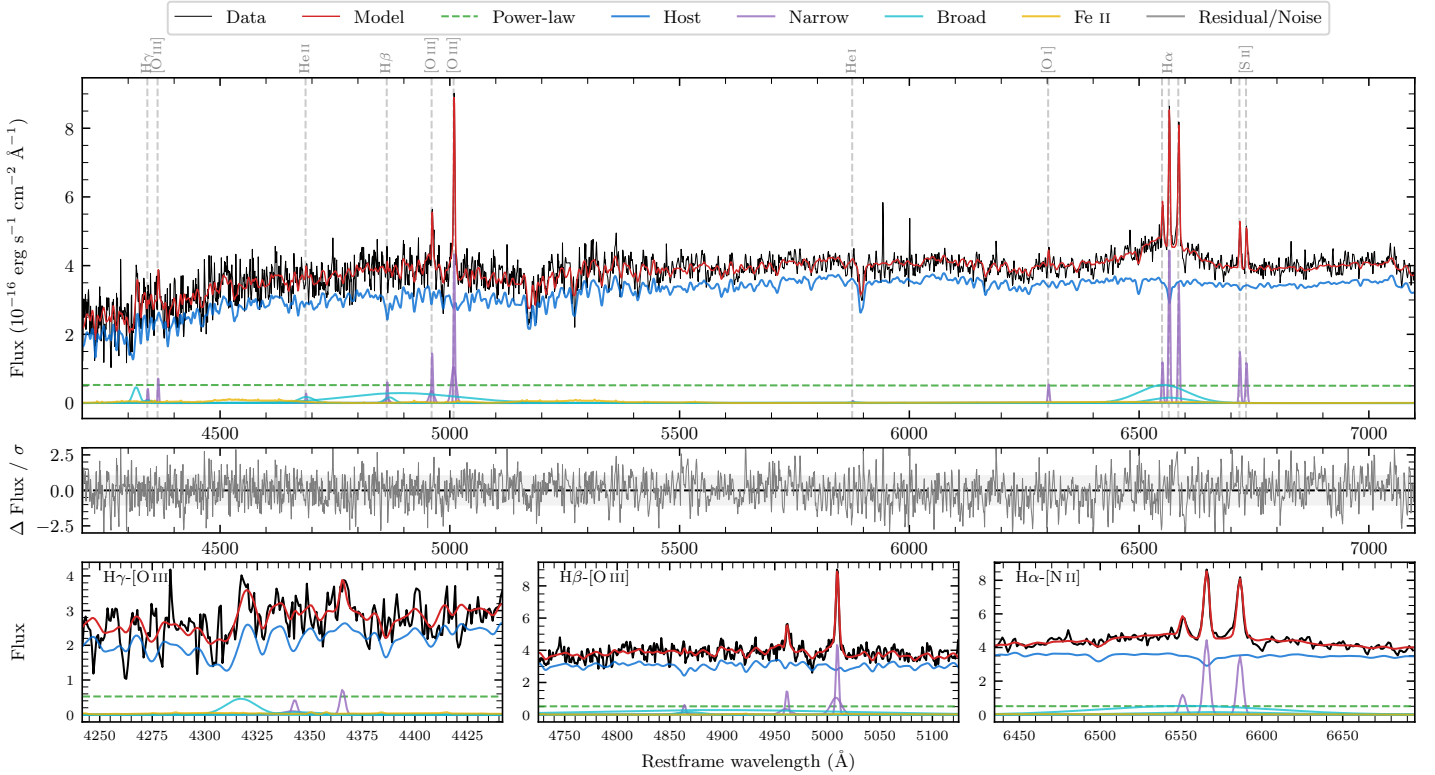
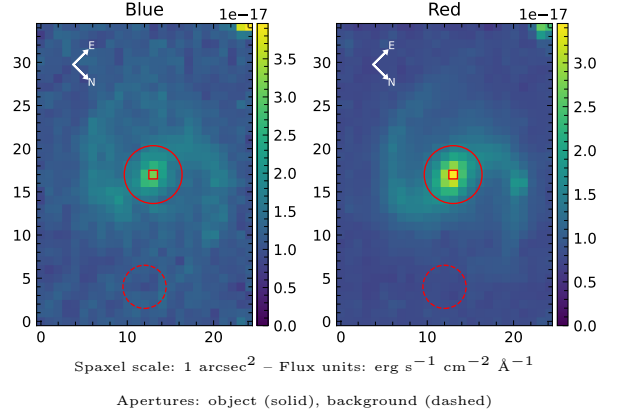


LEDA 3907129

Spectrum ID	478988527_sp1	Spectrum type	Sy 1.5+
Alt name	g1923113-551846	Quality flag	good
z	0.0608	AGN reference	6dFGS
RA, Dec	290.7971, -55.3128	MW $E(B - V)$	0.037
MJD	60165.49	Power law α_ν	-1.91 ± 0.09
SNR/ \AA B/R	10.5/23.0	$\log L_{5100, \text{AGN}}$	42.37 ± 0.17
Obs airmass	1.10	$\log H\beta_{\text{Br}}/[\text{O III}]$	< -0.03
SMSS ID	478988527	$\log M_{L5100}/M_\odot$	—
Neighbour	7.1", 2682843862	$\log M_{\text{H}\alpha}/M_\odot$	7.30 ± 0.06
SMSS $\langle r_{6'' \text{ap}} \rangle$	16.79 ± 0.09	$\log M_{\text{H}\beta}/M_\odot$	—
2MASS K_{ext}	11.95 ± 0.11	$\log M_{[\text{O III}]} / M_\odot$	—



Emission Line Measurements

Line	$\log L$ (erg s^{-1})	FWHM (km s^{-1})	σ (km s^{-1})	EW (\AA)
H γ Narrow	39.36 ± 0.27	233 ± 63	214 ± 30	4.82 ± 2.41
Hγ Broad	—	—	—	—
[O III] 4364	39.32 ± 0.20	196 ± 63	83 ± 25	4.46 ± 1.28
He II Narrow	38.94 ± 0.37	196 ± 63	83 ± 25	1.89 ± 1.16
He II Broad	—	—	—	—
H β Narrow	39.56 ± 0.19	233 ± 63	214 ± 30	7.73 ± 2.15
Hβ Broad	< 40.40	—	—	—
[O III] 5007	40.43 ± 0.03	233 ± 63	214 ± 30	58.76 ± 2.33
He I Narrow	—	—	—	—
He I Broad	—	—	—	—
[O I] 6300	39.35 ± 0.10	196 ± 63	83 ± 25	5.00 ± 0.70
H α Narrow	40.28 ± 0.02	196 ± 63	83 ± 25	42.52 ± 0.82
Hα Broad	40.91 ± 0.02	5396 ± 214	2027 ± 57	178.70 ± 4.20
[N II] 6585	40.18 ± 0.02	196 ± 63	83 ± 25	33.39 ± 0.88
[S II] 6718	39.82 ± 0.04	196 ± 63	83 ± 25	14.71 ± 0.74
[S II] 6732	39.73 ± 0.04	196 ± 63	83 ± 25	11.81 ± 0.76

Emission Summary

H α broad SNR	2.10
H β broad SNR	0.51
H γ broad SNR	0.00
AGN frac	0.15
Host frac	0.85
$\log L_{5100, \text{Host}}$	43.12
Fe II/H β	—
Fe II/[O III]	—

Quality Flags

spurious_hab/hbb	0/2
15100	2
balmer	2
balmer_snr	2
hb_width	2
balmer_width	2