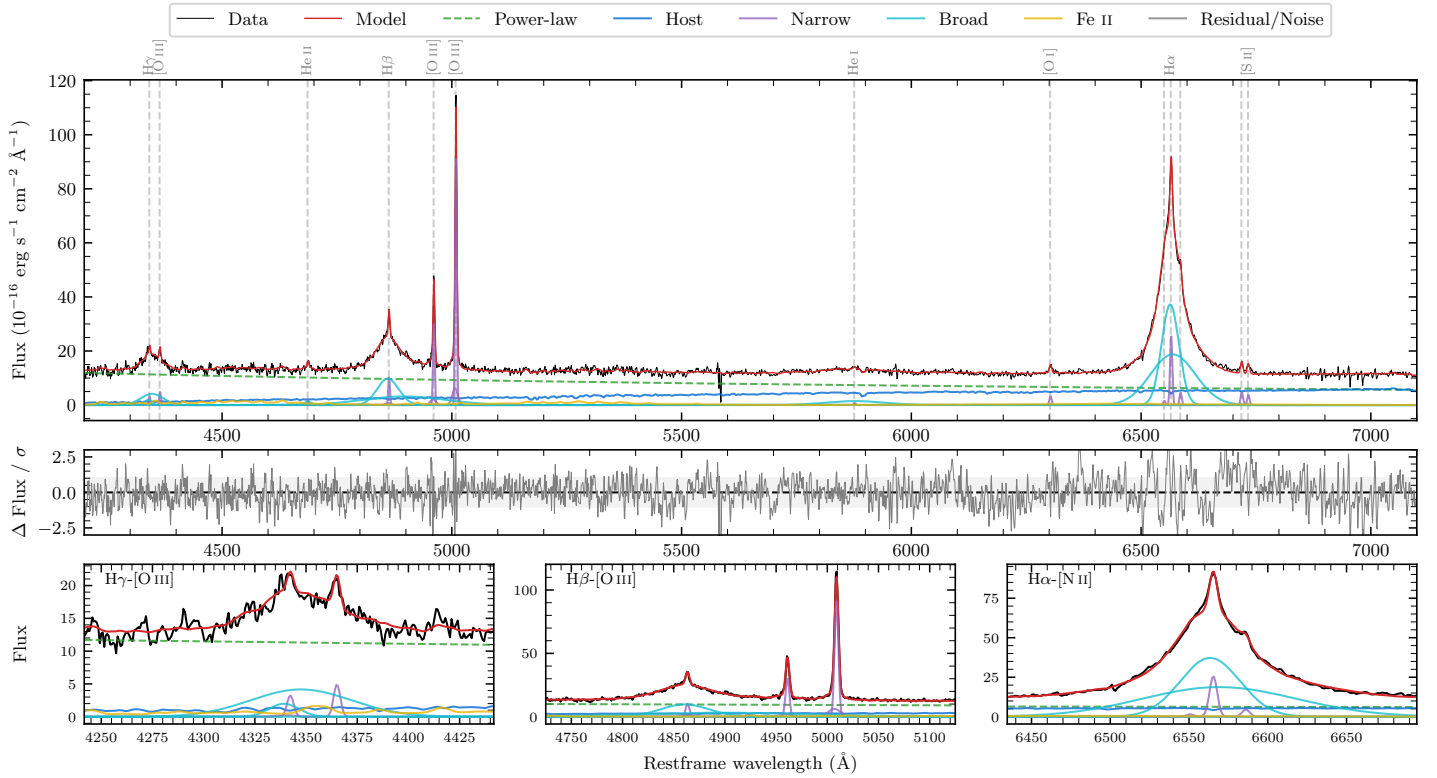
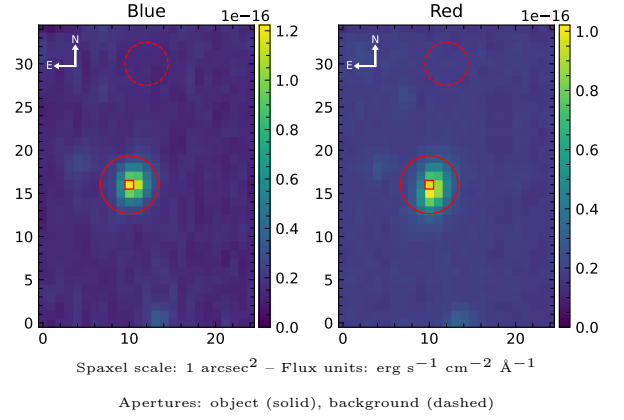


2MASS J18564937–5442298

| | | | |
|--|--------------------|--|------------------|
| Spectrum ID | 478650251_sp1 | Spectrum type | Sy 1.5 |
| Alt name | g1856494–544230 | Quality flag | good |
| z | 0.0563 | AGN reference | 6dFGS |
| RA, Dec | 284.2057, –54.7083 | MW $E(B - V)$ | 0.083 |
| MJD | 60080.72 | Power law α_ν | -0.58 ± 0.12 |
| SNR/ \AA B/R | 12.9/19.5 | $\log L_{5100, \text{AGN}}$ | 43.54 ± 0.02 |
| Obs airmass | 1.09 | $\log H\beta_{\text{Br}}/[\text{O III}]$ | 0.04 ± 0.18 |
| SMSS ID | 478650251 | $\log M_{L5100}/M_\odot$ | 7.77 ± 0.02 |
| Neighbour | 6.5", 1581614978 | $\log M_{\text{H}\alpha}/M_\odot$ | 7.64 ± 0.03 |
| SMSS $\langle r_6''_{\text{ap}} \rangle$ | 15.98 ± 0.05 | $\log M_{\text{H}\beta}/M_\odot$ | 7.74 ± 0.09 |
| 2MASS K_{ext} | 12.57 ± 0.10 | $\log M_{[\text{O III}]} / M_\odot$ | 7.88 ± 0.02 |



Emission Line Measurements

| Line | $\log L$ (erg s $^{-1}$) | FWHM (km s $^{-1}$) | σ (km s $^{-1}$) | EW (Å) |
|-----------------------------------|---|----------------------------------|---------------------------------|-------------------------------------|
| H γ Narrow | 40.11 ± 0.14 | 276 ± 63 | 192 ± 27 | 1.50 ± 0.37 |
| Hγ Broad | 41.36 ± 0.03 | 2940 ± 439 | 1337 ± 53 | 27.22 ± 0.84 |
| [O III] 4364 | 40.20 ± 0.08 | 265 ± 63 | 112 ± 25 | 1.89 ± 0.21 |
| He II Narrow | 39.84 ± 0.19 | 265 ± 63 | 112 ± 25 | 0.91 ± 0.20 |
| He II Broad | — | — | — | — |
| H β Narrow | 40.65 ± 0.03 | 276 ± 63 | 192 ± 27 | 6.22 ± 0.39 |
| Hβ Broad | $41.66^{+0.35}_{-0.01}$ | 3396 ± 65 | 1258 ± 31 | 62.83 ± 0.82 |
| [O III] 5007 | 41.62 ± 0.01 | 276 ± 63 | 192 ± 27 | 59.62 ± 0.43 |
| He I Narrow | 39.53 ± 0.24 | 265 ± 63 | 112 ± 25 | 0.61 ± 0.24 |
| He I Broad | 41.27 ± 0.03 | 7647 ± 122 | 3247 ± 51 | 33.84 ± 1.96 |
| [O I] 6300 | 40.19 ± 0.04 | 265 ± 63 | 112 ± 25 | 3.09 ± 0.22 |
| H α Narrow | 41.10 ± 0.01 | 265 ± 63 | 112 ± 25 | 26.51 ± 0.42 |
| Hα Broad | 42.51 ± 0.01 | 2589 ± 66 | 1322 ± 25 | 683.13 ± 1.31 |
| [N II] 6585 | 40.34 ± 0.05 | 265 ± 63 | 112 ± 25 | 4.70 ± 0.36 |
| [S II] 6718 | 40.37 ± 0.03 | 265 ± 63 | 112 ± 25 | 5.12 ± 0.25 |
| [S II] 6732 | 40.28 ± 0.04 | 265 ± 63 | 112 ± 25 | 4.13 ± 0.25 |

Emission Summary

| | |
|------------------------------|-------|
| H α broad SNR | 51.67 |
| H β broad SNR | 9.06 |
| H γ broad SNR | 5.51 |
| AGN frac | 0.77 |
| Host frac | 0.23 |
| $\log L_{5100, \text{Host}}$ | 43.01 |
| Fe II/H β | — |
| Fe II/[O III] | — |

Quality Flags

| | |
|------------------|-----|
| spurious_hab/hbb | 0/2 |
| 15100 | 0 |
| balmer | 0 |
| balmer_snr | 0 |
| hb_width | 0 |
| balmer_width | 0 |