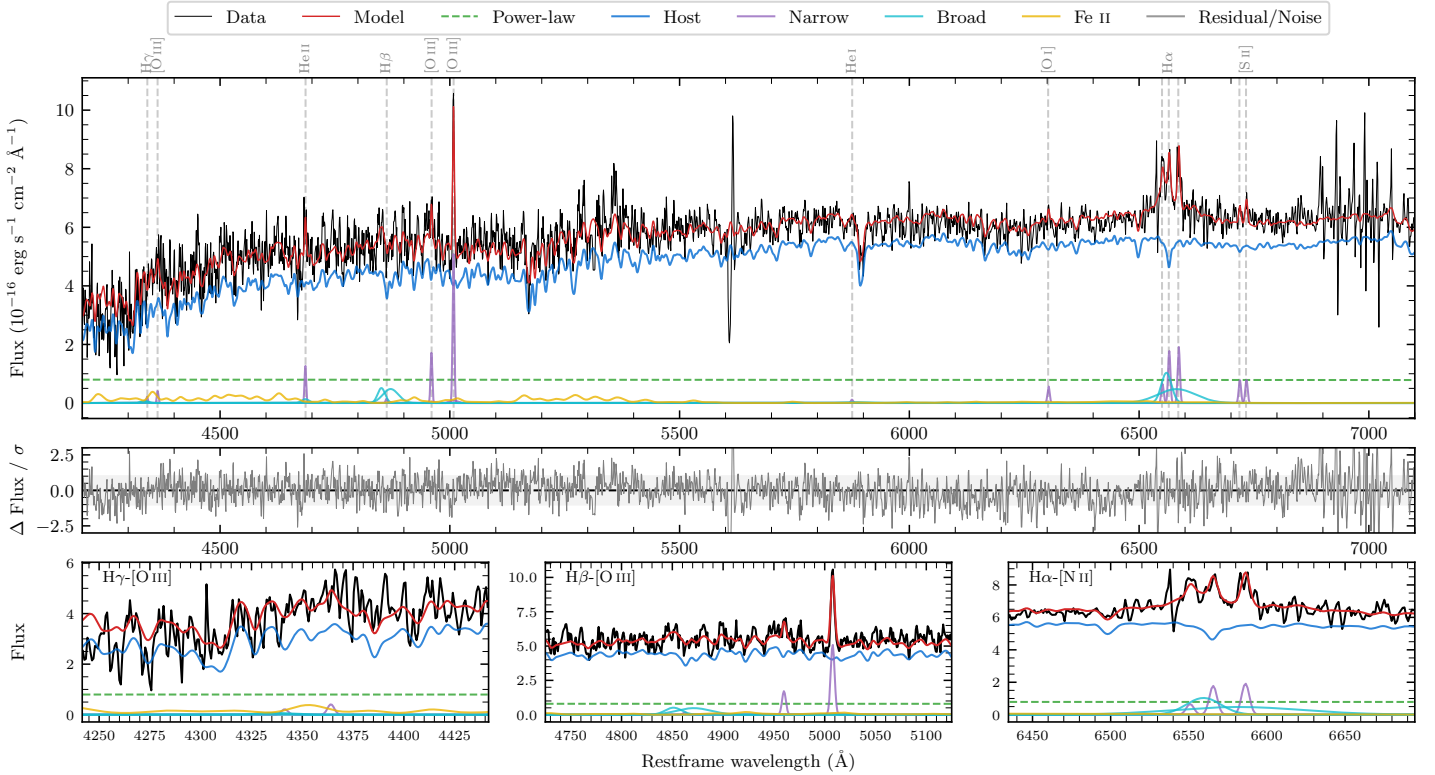
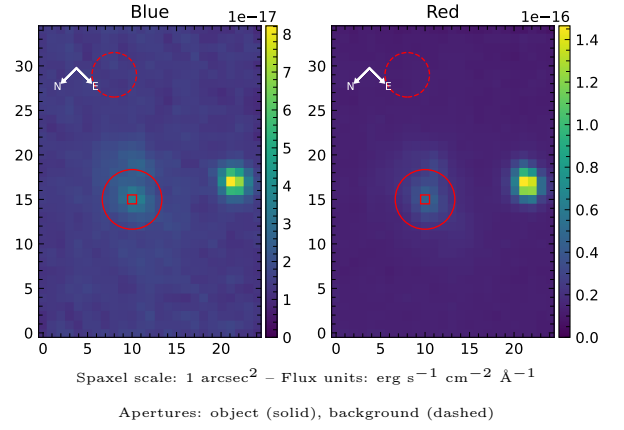


LEDA 3901798

Spectrum ID	478586083_sp1	Spectrum type	Sy 1.5
Alt name	g1849421-551310	Quality flag	good
z	0.0501	AGN reference	6dFGS
RA, Dec	282.4253, -55.2194	MW $E(B - V)$	0.081
MJD	60082.66	Power law α_ν	-1.97 ± 0.03
SNR/ \AA B/R	8.4/17.1	$\log L_{5100, \text{AGN}}$	42.38 ± 0.08
Obs airmass	1.14	$\log H\beta_{\text{Br}}/[\text{O III}]$	0.06 ± 0.11
SMSS ID	478586083	$\log M_{L5100}/M_\odot$	7.00 ± 0.15
Neighbour	3.1", 478586082	$\log M_{\text{H}\alpha}/M_\odot$	6.08 ± 0.10
SMSS $\langle r_6'' \text{ap} \rangle$	16.85 ± 0.12	$\log M_{\text{H}\beta}/M_\odot$	6.85 ± 0.16
2MASS K_{ext}	12.07 ± 0.10	$\log M_{[\text{O III}]} / M_\odot$	6.93 ± 0.15



Emission Line Measurements

Line	$\log L$ (erg s $^{-1}$)	FWHM (km s $^{-1}$)	σ (km s $^{-1}$)	EW (Angstrom)
H γ Narrow	—	—	—	—
Hγ Broad	—	—	—	—
[O III] 4364	39.03 ± 0.41	270 ± 62	114 ± 25	2.26 ± 2.14
He II Narrow	39.55 ± 0.17	270 ± 62	114 ± 25	7.58 ± 1.96
He II Broad	—	—	—	—
H β Narrow	—	—	—	—
Hβ Broad	40.28 ± 0.10	2500 ± 396	948 ± 25	40.33 ± 4.93
[O III] 5007	40.22 ± 0.04	274 ± 63	178 ± 56	34.71 ± 3.39
He I Narrow	—	—	—	—
He I Broad	—	—	—	—
[O I] 6300	39.33 ± 0.15	270 ± 62	114 ± 25	4.51 ± 1.04
H α Narrow	39.84 ± 0.07	270 ± 62	114 ± 25	14.80 ± 1.33
Hα Broad	40.69 ± 0.04	1543 ± 140	1183 ± 53	103.80 ± 4.92
[N II] 6585	39.88 ± 0.06	270 ± 62	114 ± 25	16.05 ± 1.37
[S II] 6718	39.50 ± 0.12	270 ± 62	114 ± 25	6.74 ± 1.14
[S II] 6732	39.50 ± 0.12	270 ± 62	114 ± 25	6.81 ± 1.08

Emission Summary

H α broad SNR	2.30
H β broad SNR	1.24
H γ broad SNR	0.00
AGN frac	0.16
Host frac	0.84
$\log L_{5100, \text{Host}}$	43.11
Fe II/H β	1.99
Fe II/[O III]	2.31

Quality Flags

spurious_hab/hbb	0/0
15100	2
balmer	1
balmer_snr	2
hb_width	0
balmer_width	0