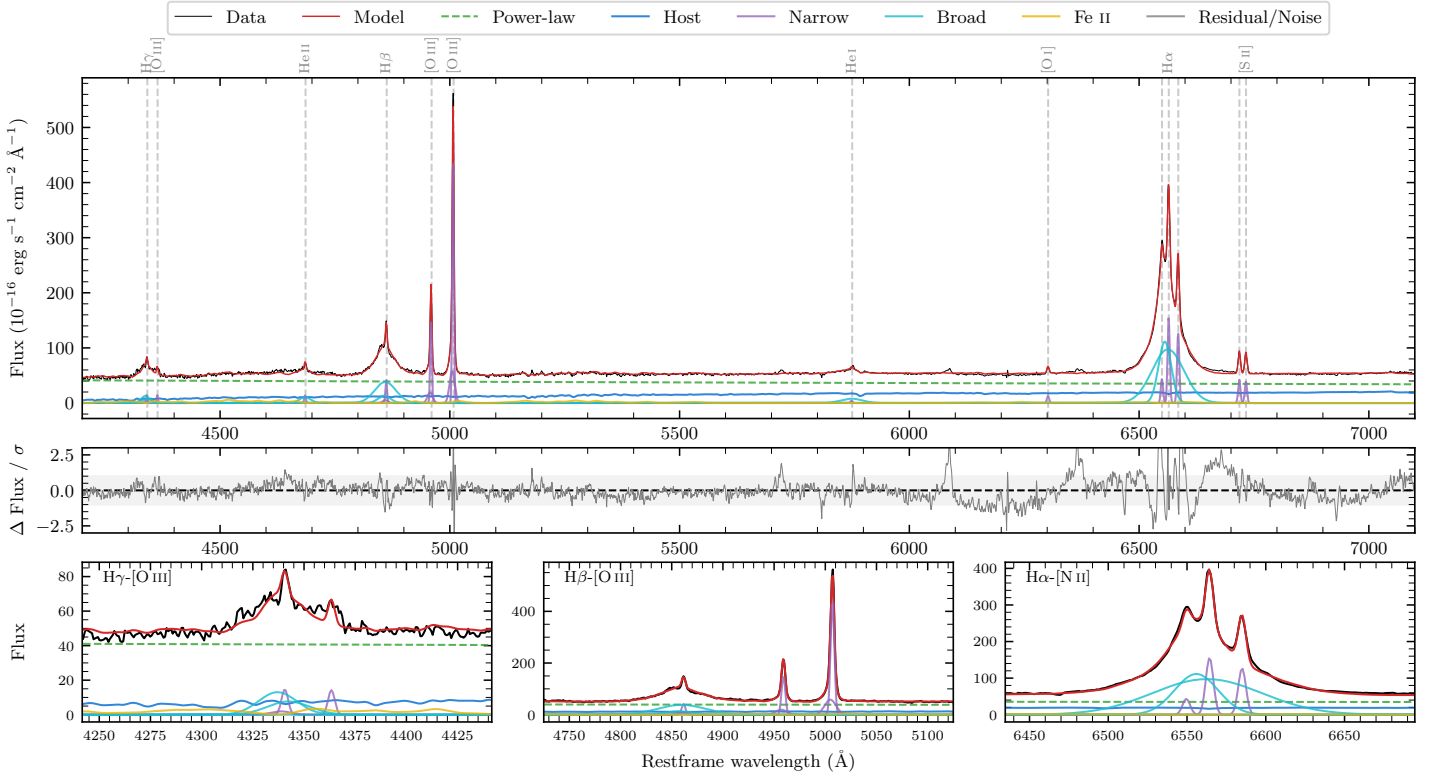
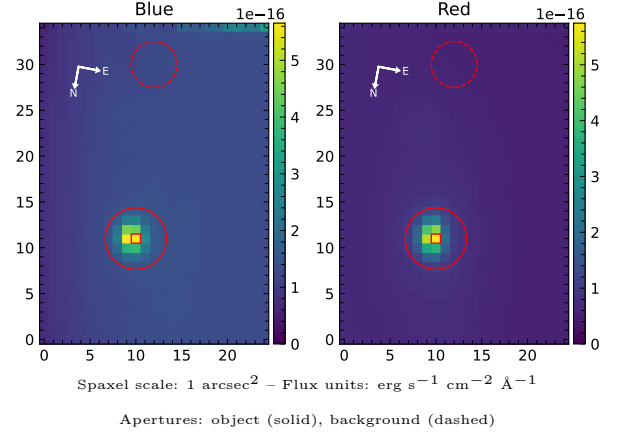


# ESO 140–43

Spectrum ID	478399456_sp2	Spectrum type	Sy 1.5
Alt name	g1844540–622153	Quality flag	good
$z$	0.0139	AGN reference	6dFGS
RA, Dec	281.2249, –62.3647	MW $E(B - V)$	0.093
MJD	59500.38	Power law $\alpha_\nu$	$-1.64 \pm 0.19$
SNR/Å B/R	9.8/21.9	$\log L_{5100, \text{AGN}}$	$42.94 \pm 0.02$
Obs airmass	1.23	$\log H\beta_{\text{Br}}/[\text{O III}]$	$-0.04 \pm 0.04$
SMSS ID	478399456	$\log M_{L5100}/M_\odot$	$7.35 \pm 0.09$
Neighbour	None $< 15''$	$\log M_{\text{H}\alpha}/M_\odot$	$7.03 \pm 0.04$
SMSS $\langle r_6''_{\text{ap}} \rangle$	$14.36 \pm 0.08$	$\log M_{\text{H}\beta}/M_\odot$	$7.31 \pm 0.10$
2MASS $K_{\text{ext}}$	$9.71 \pm 0.02$	$\log M_{[\text{O III}]} / M_\odot$	$7.47 \pm 0.09$



## Emission Line Measurements

Line	$\log L$ (erg s <sup>-1</sup> )	FWHM (km s <sup>-1</sup> )	$\sigma$ (km s <sup>-1</sup> )	EW (Å)
H $\gamma$ Narrow	$39.58 \pm 0.19$	$287 \pm 63$	$208 \pm 39$	$2.05 \pm 0.61$
<b>H<math>\gamma</math> Broad</b>	<b><math>40.40 \pm 0.10</math></b>	<b><math>1639 \pm 480</math></b>	<b><math>598 \pm 173</math></b>	<b><math>12.43 \pm 0.93</math></b>
[O III] 4364	$39.41 \pm 0.18$	$264 \pm 63$	$111 \pm 25$	$1.44 \pm 0.35$
He II Narrow	$39.43 \pm 0.17$	$264 \pm 63$	$111 \pm 25$	$1.53 \pm 0.29$
<b>He II Broad</b>	<b><math>40.26 \pm 0.28</math></b>	<b><math>1854 \pm 1677</math></b>	<b><math>787 \pm 712</math></b>	<b><math>8.33 \pm 0.77</math></b>
H $\beta$ Narrow	$40.07 \pm 0.08$	$287 \pm 63$	$208 \pm 39$	$6.76 \pm 0.49$
<b>H<math>\beta</math> Broad</b>	<b><math>41.07 \pm 0.04</math></b>	<b><math>2825 \pm 268</math></b>	<b><math>1151 \pm 198</math></b>	<b><math>68.87 \pm 1.03</math></b>
[O III] 5007	$41.11 \pm 0.01$	$287 \pm 63$	$208 \pm 39$	$74.83 \pm 0.50$
He I Narrow	$39.06 \pm 0.18$	$264 \pm 63$	$111 \pm 25$	$0.70 \pm 0.16$
<b>He I Broad</b>	<b><math>40.32 \pm 0.06</math></b>	<b><math>2763 \pm 417</math></b>	<b><math>1173 \pm 177</math></b>	<b><math>12.65 \pm 0.56</math></b>
[O I] 6300	$39.52 \pm 0.06$	$264 \pm 63$	$111 \pm 25$	$2.13 \pm 0.16$
H $\alpha$ Narrow	$40.63 \pm 0.01$	$264 \pm 63$	$111 \pm 25$	$27.40 \pm 0.25$
<b>H<math>\alpha</math> Broad</b>	<b><math>41.75 \pm 0.01</math></b>	<b><math>2163 \pm 87</math></b>	<b><math>1083 \pm 31</math></b>	<b><math>356.36 \pm 0.73</math></b>
[N II] 6585	$40.55 \pm 0.02$	$264 \pm 63$	$111 \pm 25$	$22.41 \pm 0.22$
[S II] 6718	$40.07 \pm 0.02$	$264 \pm 63$	$111 \pm 25$	$7.64 \pm 0.18$
[S II] 6732	$40.04 \pm 0.02$	$264 \pm 63$	$111 \pm 25$	$7.15 \pm 0.18$

## Emission Summary

H $\alpha$ broad SNR	38.10
H $\beta$ broad SNR	9.38
H $\gamma$ broad SNR	3.71
AGN frac	0.76
Host frac	0.23
$\log L_{5100, \text{Host}}$	42.43
Fe II/H $\beta$	0.36
Fe II/[O III]	0.34

## Quality Flags

spurious_hab/hbb	0/0
15100	0
balmer	0
balmer_snr	0
hb_width	0
balmer_width	0