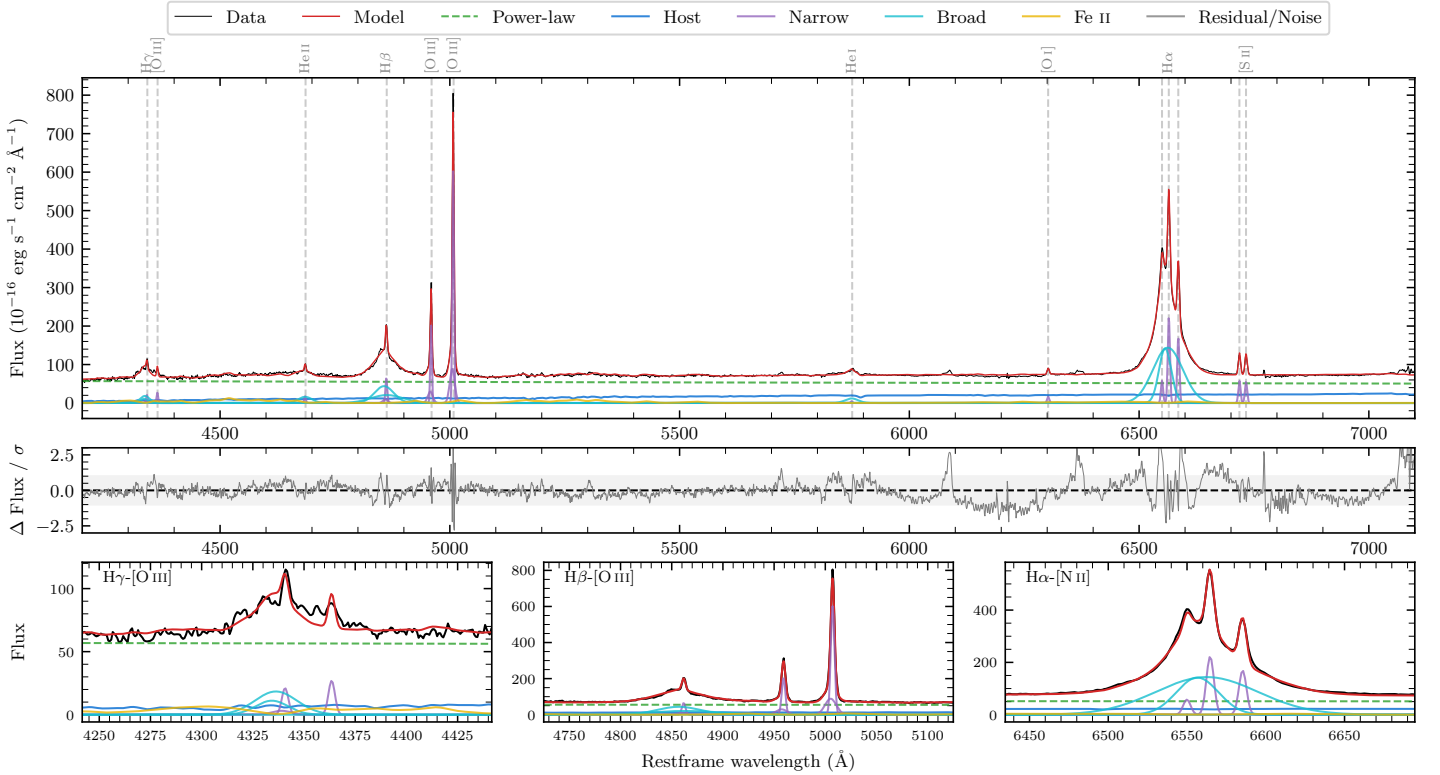
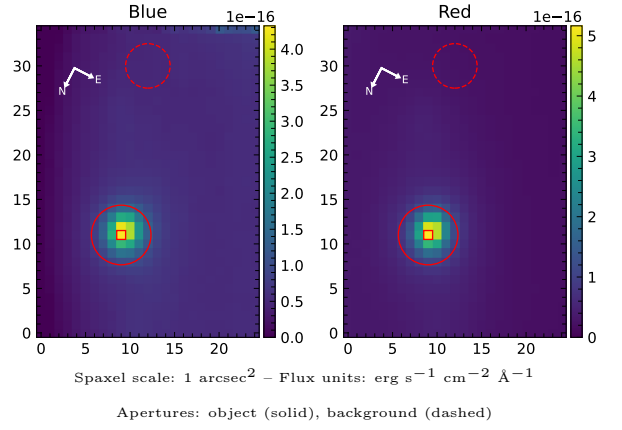


ESO 140–43

Spectrum ID	478399456_sp1	Spectrum type	Sy 1.5
Alt name	g1844540–622153	Quality flag	good
z	0.0139	AGN reference	6dFGS
RA, Dec	281.2249, –62.3647	MW $E(B - V)$	0.093
MJD	59492.38	Power law α_ν	-1.77 ± 0.18
SNR/Å B/R	8.8/19.6	$\log L_{5100, \text{AGN}}$	43.10 ± 0.02
Obs airmass	1.20	$\log H\beta_{\text{Br}}/[\text{O III}]$	-0.01 ± 0.04
SMSS ID	478399456	$\log M_{L5100}/M_\odot$	7.55 ± 0.06
Neighbour	None $< 15''$	$\log M_{\text{H}\alpha}/M_\odot$	7.11 ± 0.09
SMSS $\langle r_6''_{\text{ap}} \rangle$	14.36 ± 0.08	$\log M_{\text{H}\beta}/M_\odot$	7.53 ± 0.06
2MASS K_{ext}	9.71 ± 0.02	$\log M_{[\text{O III}]} / M_\odot$	7.68 ± 0.06



Emission Line Measurements

Line	$\log L$ (erg s^{-1})	FWHM (km s^{-1})	σ (km s^{-1})	EW (Angstrom)
H γ Narrow	39.75 ± 0.20	284 ± 63	210 ± 43	2.16 ± 0.68
Hγ Broad	40.52 ± 0.08	1655 ± 330	538 ± 106	12.43 ± 1.04
[O III] 4364	39.69 ± 0.16	260 ± 63	109 ± 25	1.93 ± 0.40
He II Narrow	39.53 ± 0.20	260 ± 63	109 ± 25	1.36 ± 0.30
He II Broad	40.45 ± 0.17	2277 ± 781	967 ± 331	11.16 ± 0.91
H β Narrow	40.29 ± 0.04	284 ± 63	210 ± 43	7.63 ± 0.53
Hβ Broad	41.25 ± 0.04	3305 ± 199	1424 ± 231	75.96 ± 1.35
[O III] 5007	41.26 ± 0.01	284 ± 63	210 ± 43	73.62 ± 0.55
He I Narrow	39.04 ± 0.31	260 ± 63	109 ± 25	0.46 ± 0.16
He I Broad	40.30 ± 0.18	1713 ± 795	727 ± 337	8.20 ± 0.44
[O I] 6300	39.62 ± 0.07	260 ± 63	109 ± 25	1.82 ± 0.17
H α Narrow	40.79 ± 0.02	260 ± 63	109 ± 25	26.30 ± 0.28
Hα Broad	41.88 ± 0.01	2169 ± 243	1038 ± 67	324.65 ± 0.76
[N II] 6585	40.67 ± 0.04	260 ± 63	109 ± 25	20.06 ± 0.24
[S II] 6718	40.21 ± 0.02	260 ± 63	109 ± 25	7.03 ± 0.18
[S II] 6732	40.19 ± 0.03	260 ± 63	109 ± 25	6.71 ± 0.19

Emission Summary

H α broad SNR	33.90
H β broad SNR	7.60
H γ broad SNR	3.29
AGN frac	0.81
Host frac	0.18
$\log L_{5100, \text{Host}}$	42.45
Fe II/H β	0.50
Fe II/[O III]	0.52

Quality Flags

spurious_hab/hbb	0/0
15100	0
balmer	0
balmer_snr	0
hb_width	0
balmer_width	0