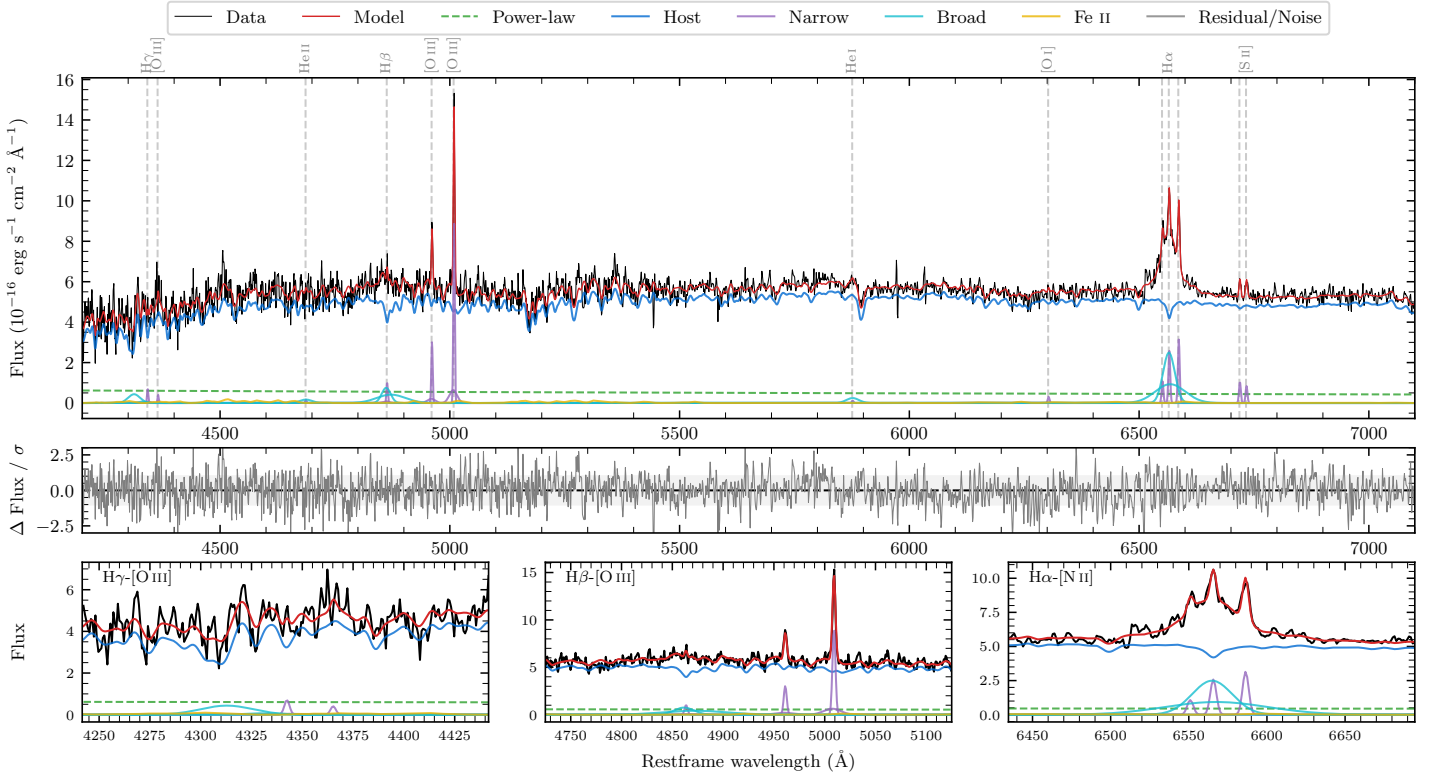
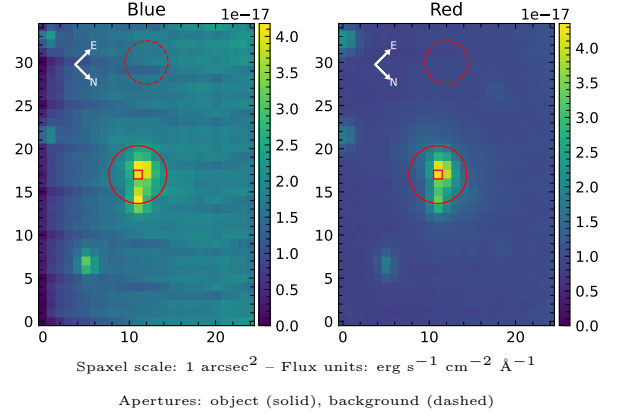


6dFGS gJ183450.8–572422

Spectrum ID	477842826_sp2	Spectrum type	Sy 1.5
Alt name	g1834508–572422	Quality flag	good
z	0.0548	AGN reference	6dFGS
RA, Dec	278.7117, –57.4061	MW $E(B - V)$	0.083
MJD	60165.46	Power law α_ν	-1.27 ± 0.25
SNR/ \AA B/R	12.9/20.3	$\log L_{5100, \text{AGN}}$	42.29 ± 0.10
Obs airmass	1.12	$\log H\beta_{\text{Br}}/[\text{O III}]$	0.03 ± 0.06
SMSS ID	477842826	$\log M_{L5100}/M_\odot$	6.74 ± 0.14
Neighbour	11.6", 1580175660	$\log M_{H\alpha}/M_\odot$	6.38 ± 0.06
SMSS $\langle r_6'' \text{ap} \rangle$	16.70 ± 0.05	$\log M_{H\beta}/M_\odot$	6.76 ± 0.14
2MASS K_{ext}	12.45 ± 0.14	$\log M_{[\text{O III}]} / M_\odot$	6.86 ± 0.14



Emission Line Measurements

Line	$\log L$ (erg s^{-1})	FWHM (km s^{-1})	σ (km s^{-1})	EW (\AA)
H γ Narrow	39.37 ± 0.23	226 ± 63	280 ± 36	5.53 ± 3.41
Hγ Broad	40.08 ± 0.13	2294 ± 229	550 ± 26	26.63 ± 5.11
[O III] 4364	39.00 ± 0.37	213 ± 63	90 ± 25	2.31 ± 1.40
He II Narrow	–	–	–	–
He II Broad	39.63 ± 0.28	1984 ± 67	842 ± 27	10.45 ± 4.19
H β Narrow	39.59 ± 0.16	226 ± 63	280 ± 36	9.79 ± 3.02
Hβ Broad	40.58 ± 0.05	1919 ± 277	1189 ± 88	96.02 ± 6.47
[O III] 5007	40.55 ± 0.03	226 ± 63	280 ± 36	91.21 ± 3.57
He I Narrow	–	–	–	–
He I Broad	39.80 ± 0.14	1629 ± 72	692 ± 29	18.22 ± 3.36
[O I] 6300	39.04 ± 0.23	213 ± 63	90 ± 25	3.35 ± 1.17
H α Narrow	39.98 ± 0.05	213 ± 63	90 ± 25	29.92 ± 1.48
Hα Broad	41.07 ± 0.01	1659 ± 82	803 ± 34	368.93 ± 5.76
[N II] 6585	40.07 ± 0.03	213 ± 63	90 ± 25	36.73 ± 1.48
[S II] 6718	39.60 ± 0.07	213 ± 63	90 ± 25	12.63 ± 1.30
[S II] 6732	39.50 ± 0.09	213 ± 63	90 ± 25	10.17 ± 1.28

Emission Summary

H α broad SNR	8.01
H β broad SNR	2.68
H γ broad SNR	1.08
AGN frac	0.10
Host frac	0.90
$\log L_{5100, \text{Host}}$	43.24
Fe II/H β	0.45
Fe II/[O III]	0.48

Quality Flags

spurious_hab/hbb	0/0
15100	2
balmer	1
balmer_snr	1
hb_width	1
balmer_width	0