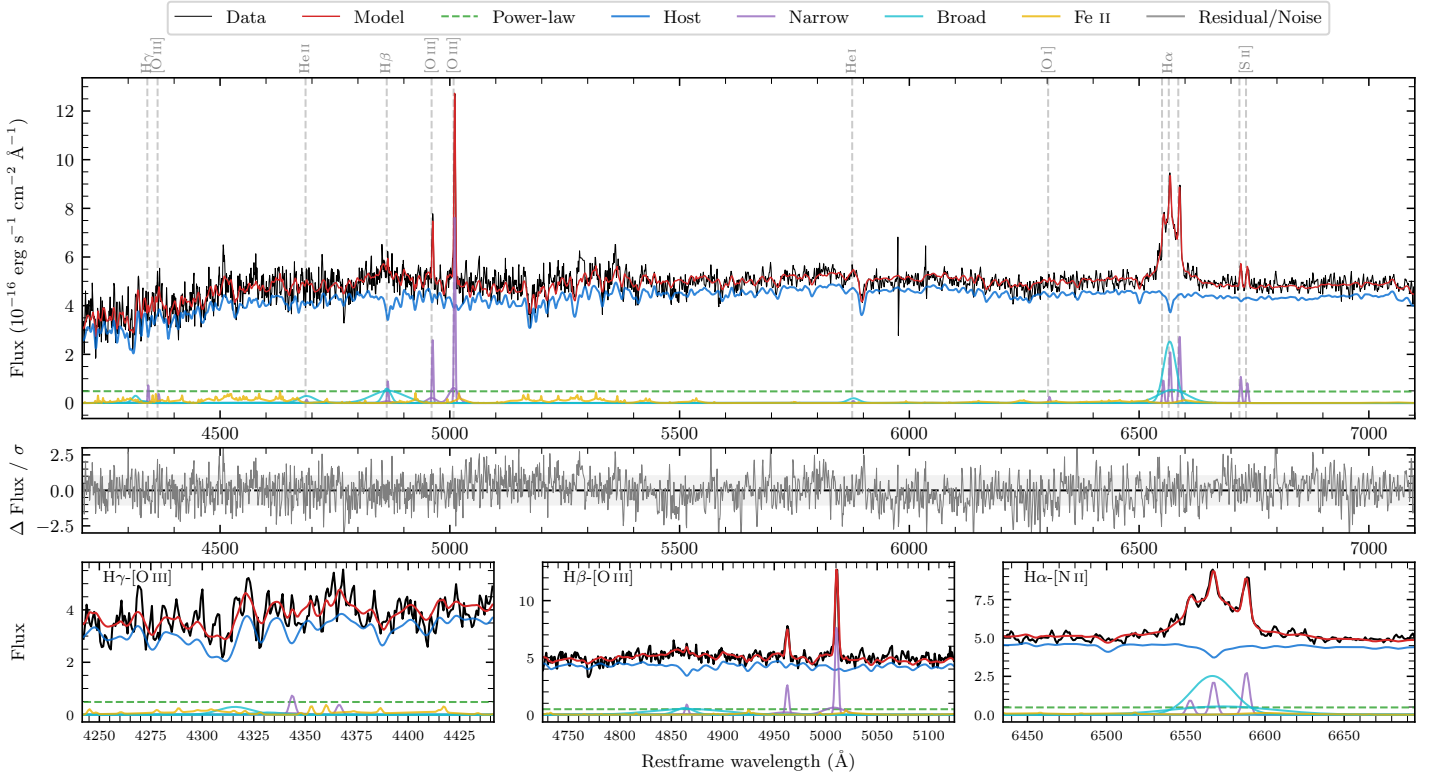
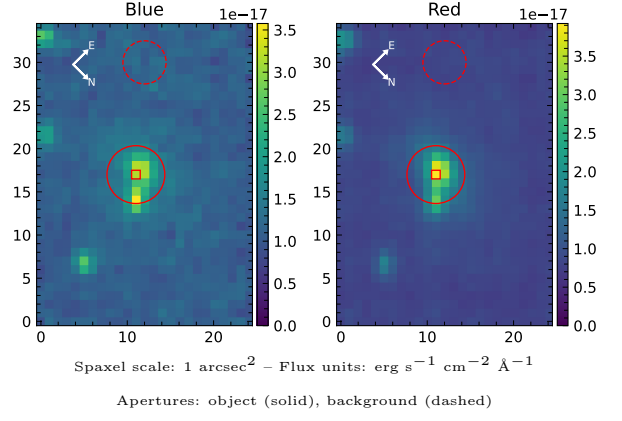


6dFGS gJ183450.8–572422

Spectrum ID	477842826_sp1	Spectrum type	Sy 1.5
Alt name	g1834508–572422	Quality flag	good
z	0.0548	AGN reference	6dFGS
RA, Dec	278.7117, –57.4061	MW $E(B - V)$	0.083
MJD	60165.46	Power law α_ν	-1.95 ± 0.05
SNR/ \AA B/R	12.1/22.6	$\log L_{5100, \text{AGN}}$	42.24 ± 0.10
Obs airmass	1.12	$\log H\beta_{\text{Br}}/[\text{O III}]$	0.11 ± 0.06
SMSS ID	477842826	$\log M_{L5100}/M_\odot$	6.80 ± 0.20
Neighbour	11.6", 1580175660	$\log M_{\text{H}\alpha}/M_\odot$	6.29 ± 0.06
SMSS $\langle r_6^{\text{ap}} \rangle$	16.70 ± 0.05	$\log M_{\text{H}\beta}/M_\odot$	6.87 ± 0.20
2MASS K_{ext}	12.45 ± 0.14	$\log M_{[\text{O III}]} / M_\odot$	6.93 ± 0.19



Emission Line Measurements

Line	$\log L$ (erg s^{-1})	FWHM (km s^{-1})	σ (km s^{-1})	EW (\AA)
H γ Narrow	39.45 ± 0.21	232 ± 63	366 ± 37	8.17 ± 4.39
Hγ Broad	—	—	—	—
[O III] 4364	38.98 ± 0.35	222 ± 63	92 ± 25	2.79 ± 1.69
He II Narrow	—	—	—	—
He II Broad	39.98 ± 0.15	2649 ± 95	1125 ± 39	27.81 ± 5.60
H β Narrow	39.58 ± 0.18	232 ± 63	366 ± 37	11.19 ± 3.69
Hβ Broad	40.64 ± 0.05	2114 ± 431	1513 ± 88	126.22 ± 7.64
[O III] 5007	40.53 ± 0.03	232 ± 63	366 ± 37	99.69 ± 4.22
He I Narrow	—	—	—	—
He I Broad	39.67 ± 0.14	1512 ± 114	642 ± 48	13.70 ± 2.61
[O I] 6300	38.96 ± 0.23	222 ± 63	92 ± 25	2.73 ± 0.91
H α Narrow	39.91 ± 0.05	222 ± 63	92 ± 25	24.32 ± 1.20
Hα Broad	40.98 ± 0.01	1595 ± 76	713 ± 36	283.04 ± 4.33
[N II] 6585	40.02 ± 0.03	222 ± 63	92 ± 25	31.43 ± 1.21
[S II] 6718	39.62 ± 0.06	222 ± 63	92 ± 25	12.41 ± 1.02
[S II] 6732	39.51 ± 0.07	222 ± 63	92 ± 25	9.58 ± 1.00

Emission Summary

H α broad SNR	7.96
H β broad SNR	2.85
H γ broad SNR	0.89
AGN frac	0.10
Host frac	0.90
$\log L_{5100, \text{Host}}$	43.19
Fe II/H β	0.78
Fe II/[O III]	0.99

Quality Flags

spurious_hab/hbb	0/0
15100	2
balmer	1
balmer_snr	2
hb_width	2
balmer_width	0