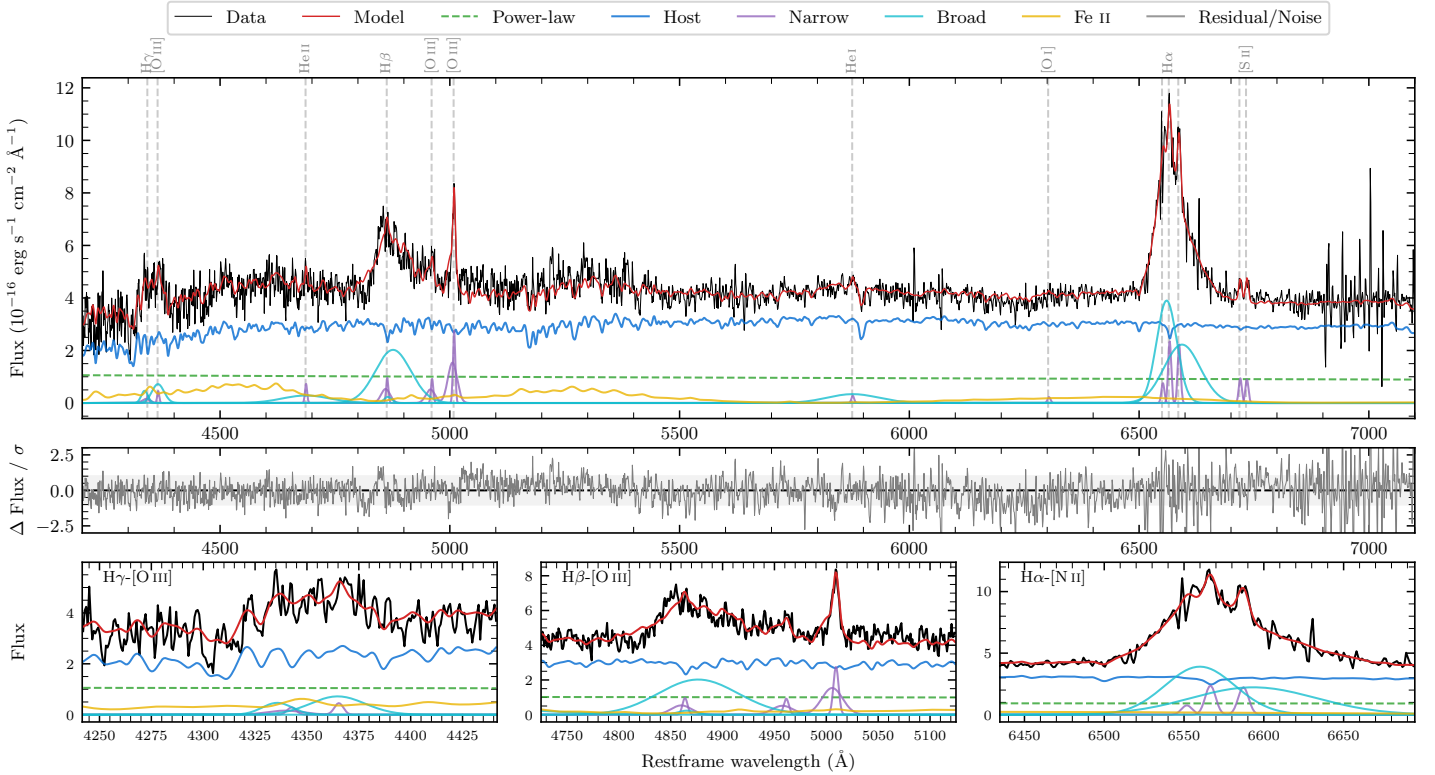
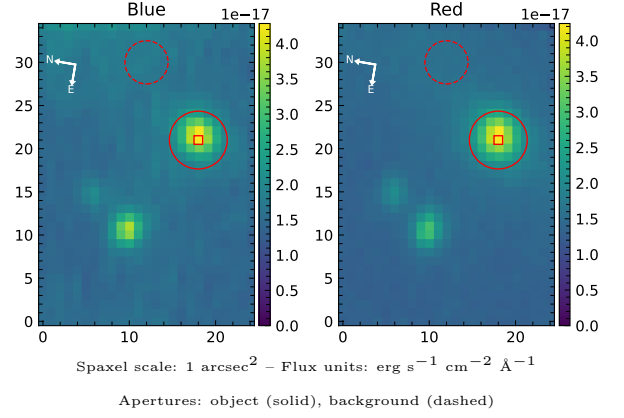


# LEDA 3904185

Spectrum ID	476888663_sp1	Spectrum type	Sy 1.2
Alt name	g1906088-485027	Quality flag	good
$z$	0.0488	AGN reference	6dFGS
RA, Dec	286.5364, -48.8409	MW $E(B - V)$	0.061
MJD	59078.45	Power law $\alpha_\nu$	$-1.68 \pm 0.15$
SNR/ $\text{\AA}$ B/R	7.1/15.1	$\log L_{5100, \text{AGN}}$	$42.45 \pm 0.05$
Obs airmass	1.06	$\log H\beta_{\text{Br}}/[\text{O III}]$	$0.56 \pm 0.04$
SMSS ID	476888663	$\log M_{L5100}/M_\odot$	$7.67 \pm 0.07$
Neighbour	13.6", 476888664	$\log M_{\text{H}\alpha}/M_\odot$	$7.12 \pm 0.03$
SMSS $\langle r_6'' \text{ap} \rangle$	$15.86 \pm 0.04$	$\log M_{\text{H}\beta}/M_\odot$	$7.85 \pm 0.07$
2MASS $K_{\text{ext}}$	$11.34 \pm 0.07$	$\log M_{[\text{O III}]} / M_\odot$	$7.71 \pm 0.08$



## Emission Line Measurements

Line	$\log L$ (erg s <sup>-1</sup> )	FWHM (km s <sup>-1</sup> )	$\sigma$ (km s <sup>-1</sup> )	EW (Å)
H $\gamma$ Narrow	$39.47 \pm 0.40$	$491 \pm 79$	$515 \pm 31$	$5.06 \pm 3.37$
<b>H<math>\gamma</math> Broad</b>	<b><math>40.28 \pm 0.13</math></b>	<b><math>3174 \pm 735</math></b>	<b><math>1036 \pm 63</math></b>	<b><math>32.26 \pm 4.20</math></b>
[O III] 4364	$39.16 \pm 0.42$	$354 \pm 63$	$149 \pm 25$	$2.48 \pm 1.67$
He II Narrow	$39.40 \pm 0.23$	$354 \pm 63$	$149 \pm 25$	$4.42 \pm 1.55$
<b>He II Broad</b>	<b><math>40.34 \pm 0.14</math></b>	<b><math>7783 \pm 65</math></b>	<b><math>3305 \pm 26</math></b>	<b><math>38.12 \pm 6.96</math></b>
H $\beta$ Narrow	$40.06 \pm 0.15$	$491 \pm 79$	$515 \pm 31$	$19.68 \pm 2.94$
<b>H<math>\beta</math> Broad</b>	<b><math>41.07 \pm 0.03</math></b>	<b><math>5214 \pm 354</math></b>	<b><math>1998 \pm 33</math></b>	<b><math>207.87 \pm 6.01</math></b>
[O III] 5007	$40.51 \pm 0.03$	$491 \pm 79$	$515 \pm 31$	$58.69 \pm 3.03$
He I Narrow	$39.08 \pm 0.24$	$354 \pm 63$	$149 \pm 25$	$2.26 \pm 0.77$
<b>He I Broad</b>	<b><math>40.44 \pm 0.06</math></b>	<b><math>6677 \pm 64</math></b>	<b><math>2836 \pm 26</math></b>	<b><math>52.19 \pm 3.80</math></b>
[O I] 6300	$39.02 \pm 0.26$	$354 \pm 63$	$149 \pm 25$	$2.02 \pm 0.75$
H $\alpha$ Narrow	$40.05 \pm 0.04$	$354 \pm 63$	$149 \pm 25$	$22.19 \pm 1.07$
<b>H<math>\alpha</math> Broad</b>	<b><math>41.40 \pm 0.01</math></b>	<b><math>3096 \pm 81</math></b>	<b><math>1302 \pm 25</math></b>	<b><math>496.41 \pm 3.16</math></b>
[N II] 6585	$40.03 \pm 0.04$	$354 \pm 63$	$149 \pm 25$	$21.04 \pm 1.01$
[S II] 6718	$39.67 \pm 0.07$	$354 \pm 63$	$149 \pm 25$	$9.13 \pm 0.82$
[S II] 6732	$39.65 \pm 0.07$	$354 \pm 63$	$149 \pm 25$	$8.76 \pm 0.87$

## Emission Summary

H $\alpha$ broad SNR	9.52
H $\beta$ broad SNR	3.85
H $\gamma$ broad SNR	1.38
AGN frac	0.26
Host frac	0.74
$\log L_{5100, \text{Host}}$	42.91
Fe II/H $\beta$	0.92
Fe II/[O III]	3.28

## Quality Flags

spurious_hab/hbb	0/0
15100	1
balmer	0
balmer_snr	1
hb_width	0
balmer_width	0