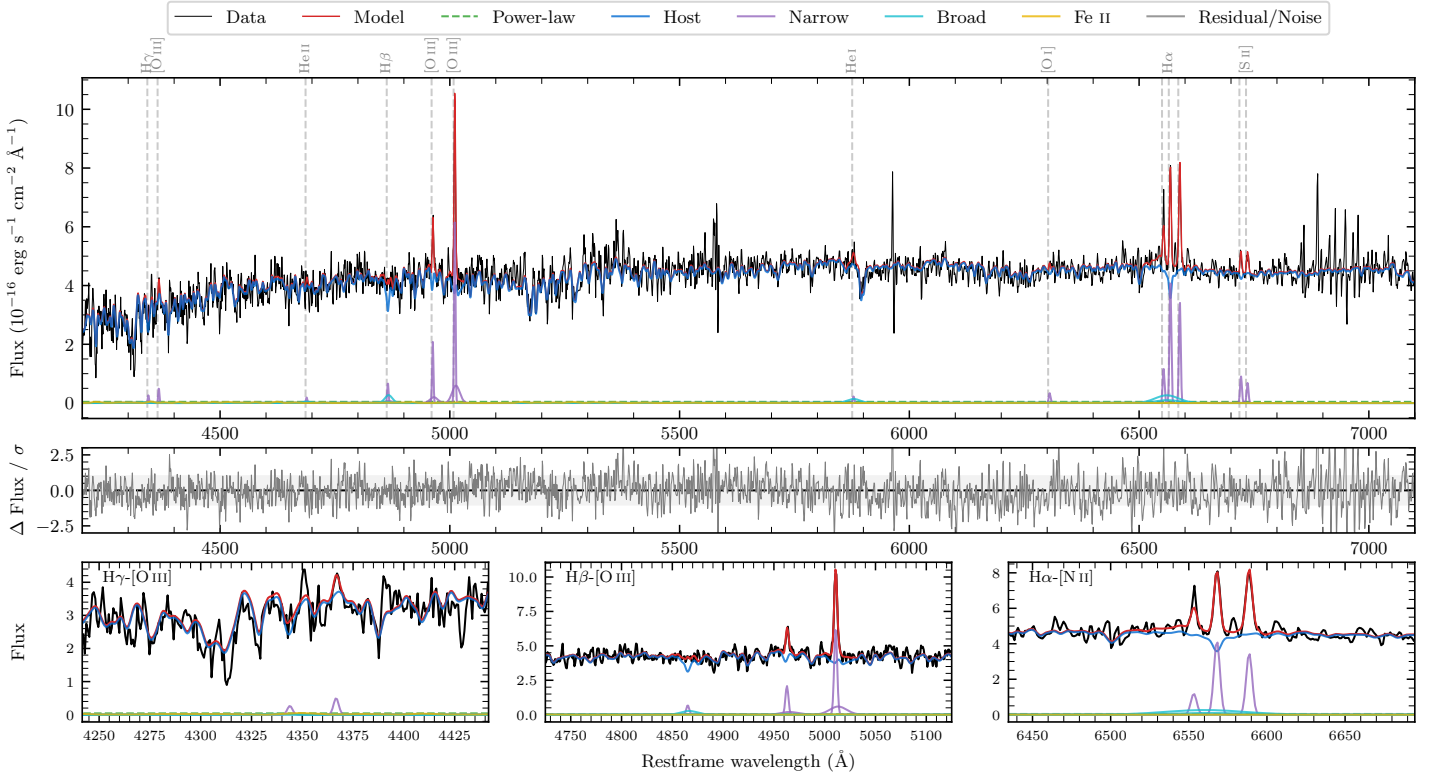
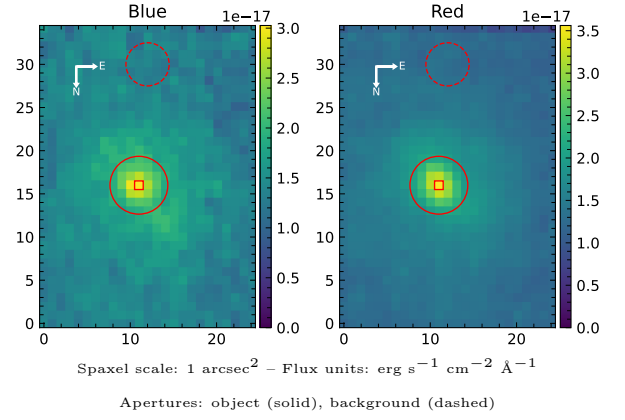


LEDA 131634

Spectrum ID	474671_sp1	Spectrum type	Sy 2
Alt name	g2205311-373711	Quality flag	good
z	0.0570	AGN reference	6dFGS
RA, Dec	331.3797, -37.6199	MW $E(B - V)$	0.017
MJD	60083.79	Power law α_ν	-1.98 ± 0.02
SNR/ \AA B/R	9.5/16.5	$\log L_{5100, \text{AGN}}$	41.20 ± 0.58
Obs airmass	1.06	$\log H\beta_{\text{Br}}/[\text{O III}]$	—
SMSS ID	474671	$\log M_{L5100}/M_\odot$	—
Neighbour	None $< 15''$	$\log M_{\text{H}\alpha}/M_\odot$	—
SMSS $\langle r_6''_{\text{ap}} \rangle$	nan \pm nan	$\log M_{\text{H}\beta}/M_\odot$	—
2MASS K_{ext}	12.83 ± 0.14	$\log M_{[\text{O III}]} / M_\odot$	—



Emission Line Measurements

Line	$\log L$ (erg s ⁻¹)	FWHM (km s ⁻¹)	σ (km s ⁻¹)	EW (Å)
H γ Narrow	—	—	—	—
Hγ Broad	—	—	—	—
[O III] 4364	39.11 ± 0.29	211 ± 62	88 ± 25	41.56 ± 21.19
He II Narrow	—	—	—	—
He II Broad	—	—	—	—
H β Narrow	39.49 ± 0.22	224 ± 63	313 ± 37	98.17 ± 42.28
Hβ Broad	—	—	—	—
[O III] 5007	40.45 ± 0.04	224 ± 63	313 ± 37	915.48 ± 48.84
He I Narrow	38.90 ± 0.35	211 ± 62	88 ± 25	25.68 ± 13.90
He I Broad	39.60 ± 0.26	1719 ± 62	730 ± 25	128.93 ± 41.77
[O I] 6300	39.10 ± 0.25	211 ± 62	88 ± 25	41.02 ± 13.27
H α Narrow	40.21 ± 0.02	211 ± 62	88 ± 25	524.16 ± 15.67
Hα Broad	—	—	—	—
[N II] 6585	40.13 ± 0.02	211 ± 62	88 ± 25	436.83 ± 15.71
[S II] 6718	39.56 ± 0.09	211 ± 62	88 ± 25	117.22 ± 13.91
[S II] 6732	39.43 ± 0.11	211 ± 62	88 ± 25	88.10 ± 13.59

Emission Summary

H α broad SNR	0.88
H β broad SNR	0.00
H γ broad SNR	0.00
AGN frac	0.01
Host frac	0.99
$\log L_{5100, \text{Host}}$	43.20
Fe II/H β	—
Fe II/[O III]	—

Quality Flags

spurious_hab/hbb	0/0
15100	2
balmer	2
balmer_snr	2
hb_width	2
balmer_width	2