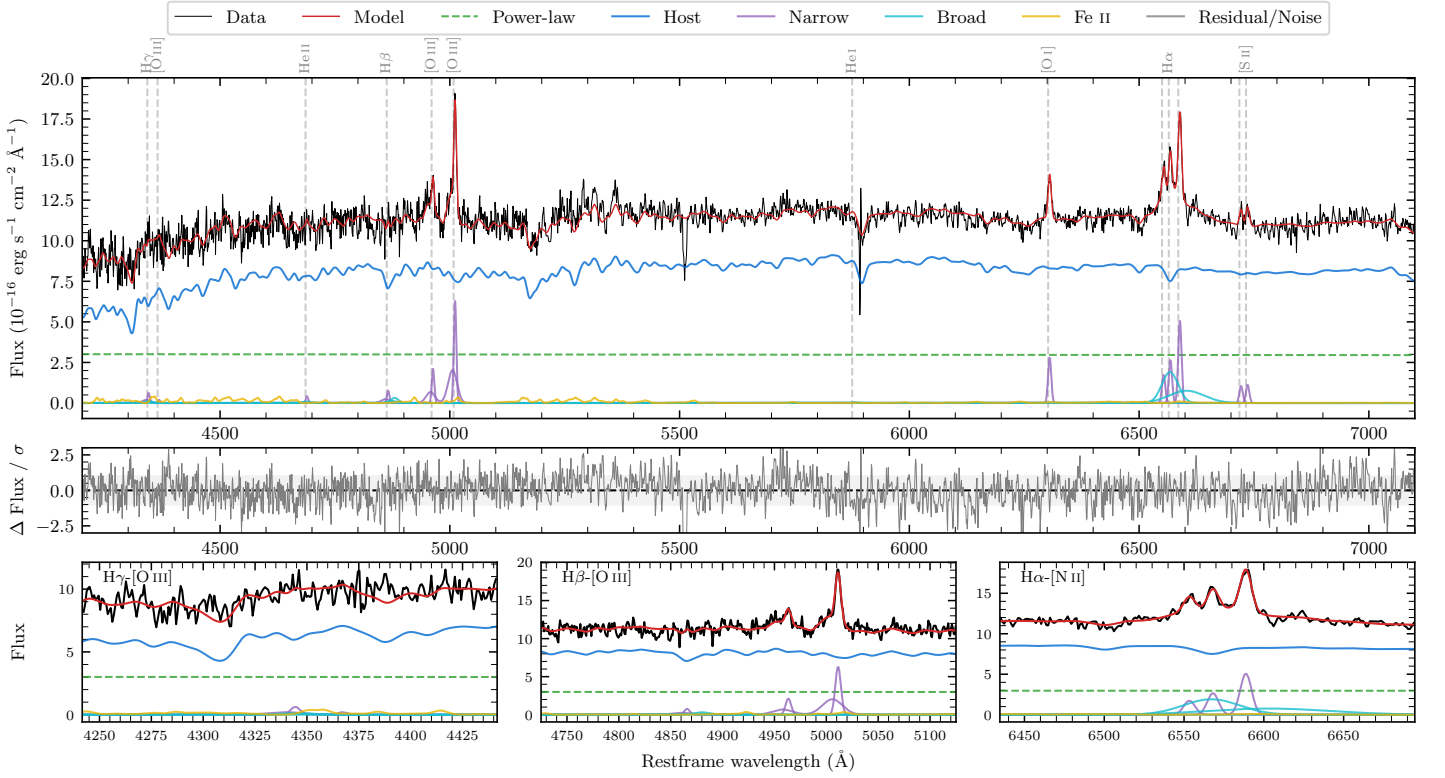
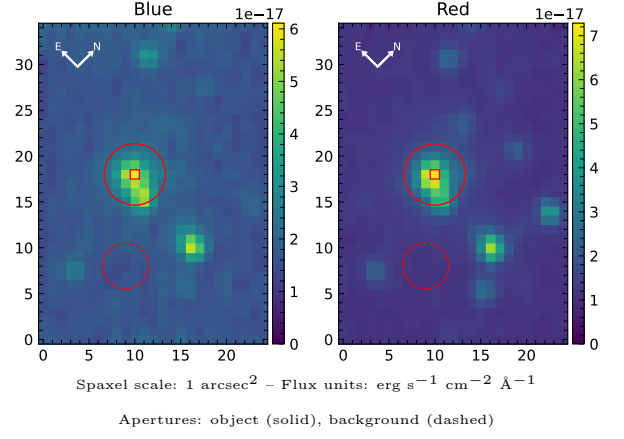


# ICRF J180957.8–455241

Spectrum ID	473391762_sp1	Spectrum type	Sy 1.8+
Alt name	g1809579–455241	Quality flag	good
$z$	0.0691	AGN reference	6dFGS
RA, Dec	272.4908, –45.8782	MW $E(B - V)$	0.117
MJD	60162.47	Power law $\alpha_\nu$	$-1.96 \pm 0.04$
SNR/ $\text{\AA}$ B/R	17.1/29.0	$\log L_{5100, \text{AGN}}$	$43.26 \pm 0.04$
Obs airmass	1.03	$\log H\beta_{\text{Br}}/[\text{O III}]$	$< -0.50$
SMSS ID	473391762	$\log M_{L5100}/M_\odot$	–
Neighbour	9.0", 473391759	$\log M_{\text{H}\alpha}/M_\odot$	$6.80 \pm 0.06$
SMSS $\langle r_{6'' \text{ap}} \rangle$	$16.04 \pm 0.01$	$\log M_{\text{H}\beta}/M_\odot$	–
2MASS $K_{\text{ext}}$	$12.01 \pm 0.08$	$\log M_{[\text{O III}]} / M_\odot$	–



## Emission Line Measurements

Line	$\log L$ ( $\text{erg s}^{-1}$ )	FWHM ( $\text{km s}^{-1}$ )	$\sigma$ ( $\text{km s}^{-1}$ )	EW ( $\text{\AA}$ )
H $\gamma$ Narrow	$39.99 \pm 0.28$	$458 \pm 65$	$466 \pm 29$	$2.78 \pm 1.07$
<b>H<math>\gamma</math> Broad</b>	–	–	–	–
[O III] 4364	–	–	–	–
He II Narrow	$39.53 \pm 0.37$	$383 \pm 62$	$161 \pm 25$	$0.96 \pm 0.53$
<b>He II Broad</b>	–	–	–	–
H $\beta$ Narrow	$40.14 \pm 0.17$	$458 \pm 65$	$467 \pm 29$	$3.86 \pm 0.98$
<b>H<math>\beta</math> Broad</b>	$< 40.56$	–	–	–
[O III] 5007	$41.06 \pm 0.02$	$458 \pm 65$	$467 \pm 29$	$32.88 \pm 1.12$
He I Narrow	–	–	–	–
<b>He I Broad</b>	–	–	–	–
[O I] 6300	$40.48 \pm 0.03$	$383 \pm 62$	$161 \pm 25$	$8.61 \pm 0.39$
H $\alpha$ Narrow	$40.47 \pm 0.05$	$383 \pm 62$	$161 \pm 25$	$8.53 \pm 0.41$
<b>H<math>\alpha</math> Broad</b>	<b><math>41.29 \pm 0.03</math></b>	<b><math>2304 \pm 118</math></b>	<b><math>1090 \pm 31</math></b>	<b><math>56.52 \pm 1.38</math></b>
[N II] 6585	$40.75 \pm 0.02$	$383 \pm 62$	$161 \pm 25$	$16.34 \pm 0.46$
[S II] 6718	$40.08 \pm 0.09$	$383 \pm 62$	$161 \pm 25$	$3.46 \pm 0.40$
[S II] 6732	$40.11 \pm 0.08$	$383 \pm 62$	$161 \pm 25$	$3.70 \pm 0.40$

## Emission Summary

H $\alpha$ broad SNR	3.83
H $\beta$ broad SNR	0.82
H $\gamma$ broad SNR	0.00
AGN frac	0.27
Host frac	0.73
$\log L_{5100, \text{Host}}$	43.68
Fe II/H $\beta$	–
Fe II/[O III]	0.59

## Quality Flags

spurious_hab/hbb	0/0
15100	1
balmer	2
balmer_snr	2
hb_width	2
balmer_width	2