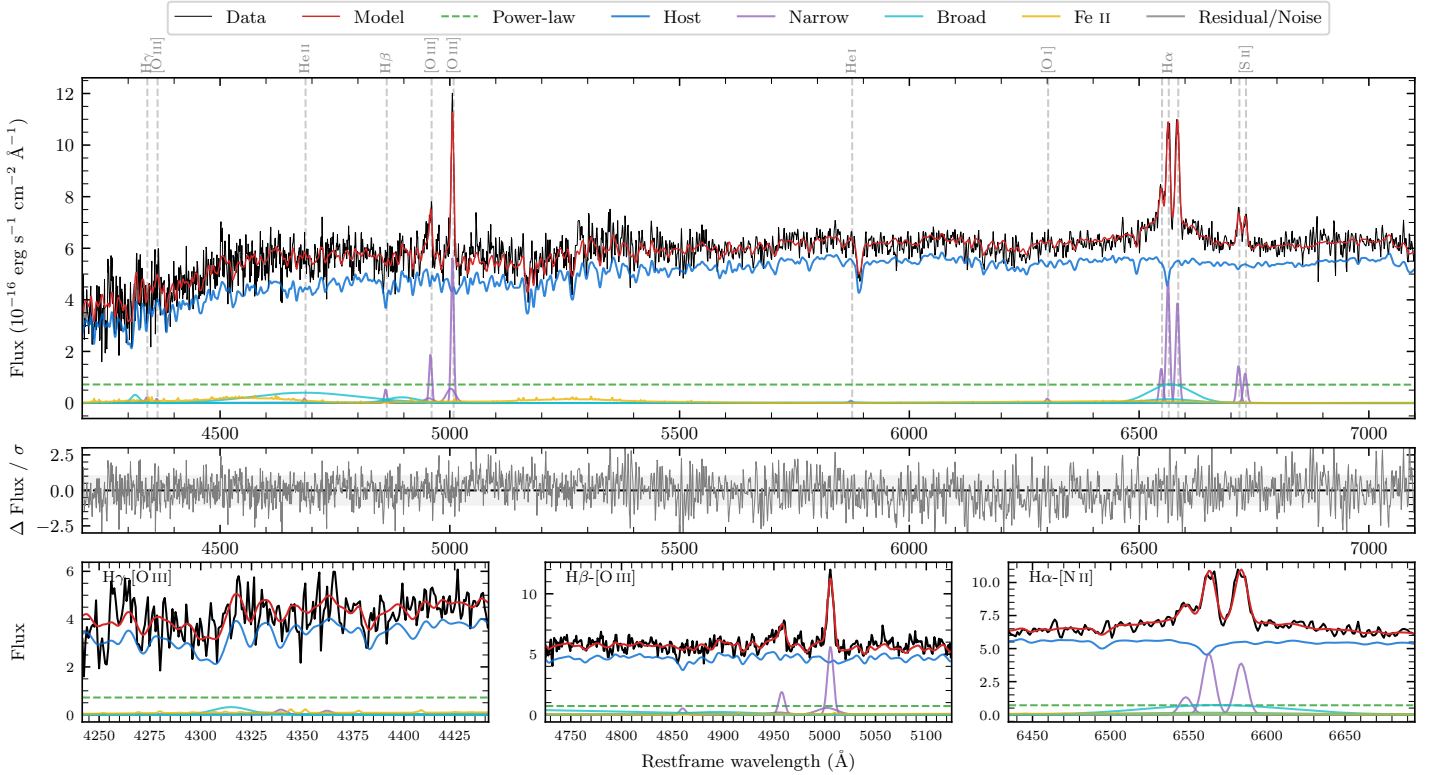
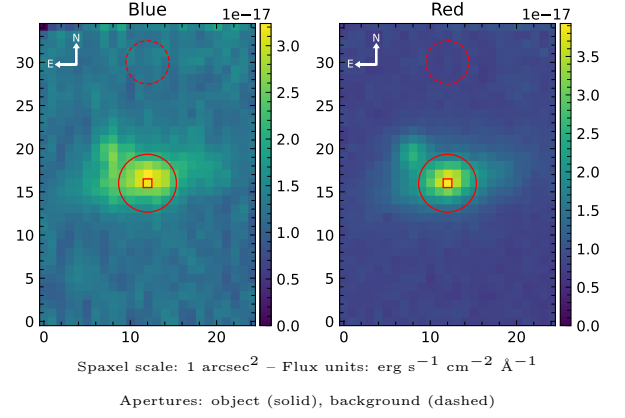


LEDA 148379

Spectrum ID	472981554_sp1	Spectrum type	Sy 1.5+
Alt name	g0606075-493848	Quality flag	good
z	0.0562	AGN reference	6dFGS
RA, Dec	91.5313, -49.6466	MW $E(B - V)$	0.039
MJD	61032.54	Power law α_ν	-1.98 ± 0.02
SNR/ \AA B/R	10.8/23.8	$\log L_{5100, \text{AGN}}$	42.45 ± 0.06
Obs airmass	1.07	$\log H\beta_{\text{Br}}/[\text{O III}]$	< -0.03
SMSS ID	472981554	$\log M_{L5100}/M_\odot$	—
Neighbour	4.5", 472981552	$\log M_{H\alpha}/M_\odot$	7.26 ± 0.05
SMSS $\langle r_{6'' \text{ap}} \rangle$	16.72 ± 0.06	$\log M_{H\beta}/M_\odot$	—
2MASS K_{ext}	12.31 ± 0.09	$\log M_{[\text{O III}]} / M_\odot$	—



Emission Line Measurements

Line	$\log L$ (erg s $^{-1}$)	FWHM (km s $^{-1}$)	σ (km s $^{-1}$)	EW (Angstrom)
H γ Narrow	—	—	—	—
Hγ Broad	—	—	—	—
[O III] 4364	—	—	—	—
He II Narrow	—	—	—	—
He II Broad	40.98 ± 0.06	17661 ± 62	7500 ± 25	173.52 ± 14.13
H β Narrow	39.62 ± 0.24	449 ± 63	349 ± 46	7.50 ± 3.52
Hβ Broad	< 40.63	—	—	—
[O III] 5007	40.66 ± 0.03	449 ± 63	349 ± 46	82.71 ± 3.39
He I Narrow	38.83 ± 0.46	423 ± 62	179 ± 25	1.23 ± 1.04
He I Broad	—	—	—	—
[O I] 6300	39.12 ± 0.29	423 ± 62	179 ± 25	2.42 ± 1.01
H α Narrow	40.57 ± 0.02	423 ± 62	179 ± 25	67.42 ± 1.46
Hα Broad	40.93 ± 0.03	5023 ± 132	1878 ± 60	153.66 ± 4.35
[N II] 6585	40.49 ± 0.02	423 ± 62	179 ± 25	56.68 ± 1.36
[S II] 6718	40.07 ± 0.04	423 ± 62	179 ± 25	21.47 ± 1.16
[S II] 6732	39.97 ± 0.05	423 ± 62	179 ± 25	17.08 ± 1.11

Emission Summary

H α broad SNR	1.76
H β broad SNR	0.57
H γ broad SNR	0.00
AGN frac	0.14
Host frac	0.86
$\log L_{5100, \text{Host}}$	43.25
Fe II/H β	—
Fe II/[O III]	0.89

Quality Flags

spurious_hab/hbb	0/0
15100	2
balmer	2
balmer_snr	2
hb_width	2
balmer_width	2