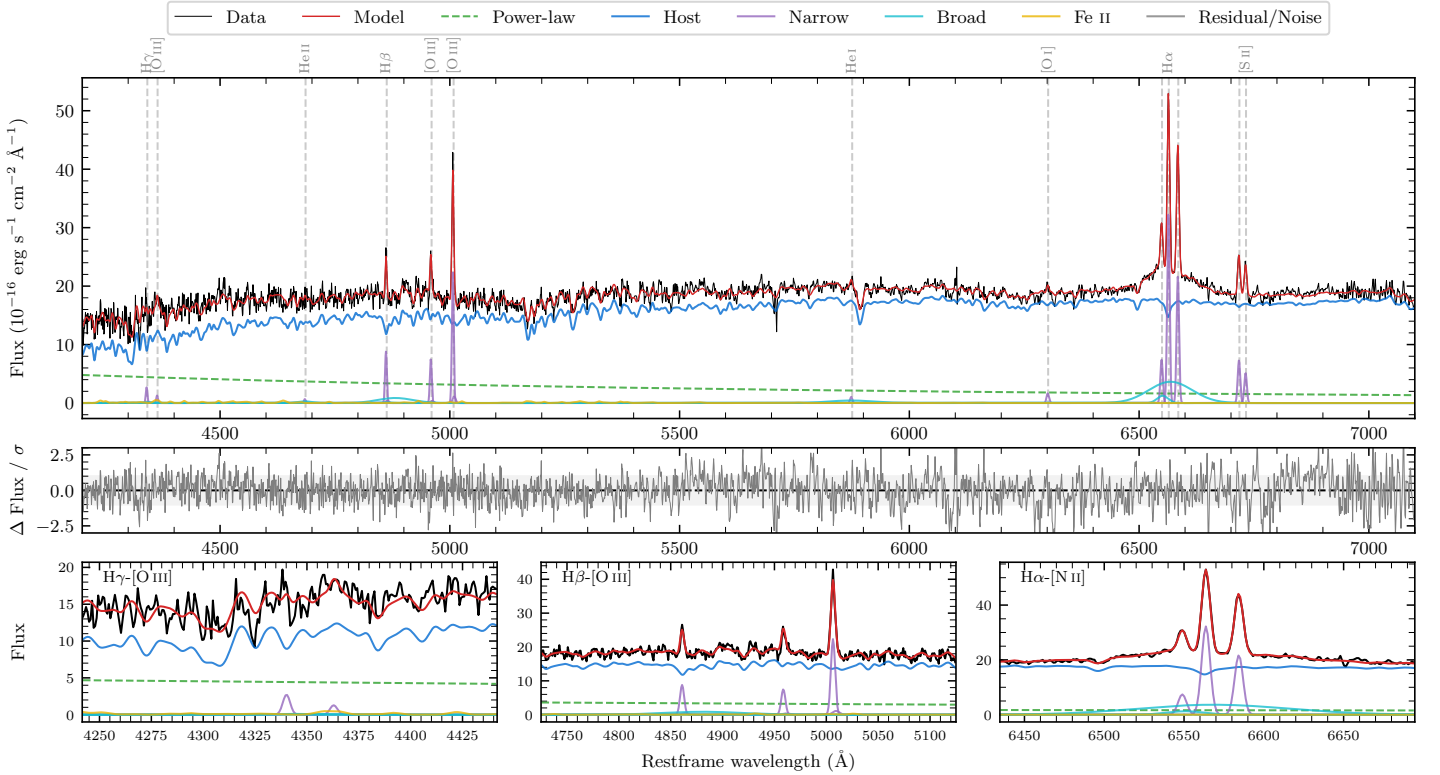
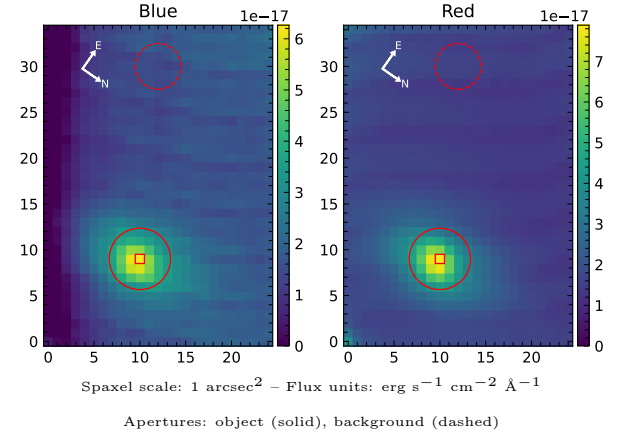


LEDA 3081519

Spectrum ID	47288038_sp2	Spectrum type	Sy 1.5+
Alt name	g0856256-244631	Quality flag	good
z	0.0326	AGN reference	6dFGS
RA, Dec	134.1068, -24.7752	MW $E(B-V)$	0.149
MJD	59994.65	Power law α_ν	0.42 ± 0.08
SNR/ \AA B/R	15.6/33.3	$\log L_{5100, \text{AGN}}$	42.57 ± 0.03
Obs airmass	1.23	$\log H\beta_{\text{Br}}/[\text{O III}]$	< -0.08
SMSS ID	47288038	$\log M_{L5100}/M_\odot$	—
Neighbour	14.4", 47288037	$\log M_{\text{H}\alpha}/M_\odot$	7.17 ± 0.06
SMSS $\langle r_{6''}^{\text{ap}} \rangle$	15.89 ± 0.09	$\log M_{\text{H}\beta}/M_\odot$	—
2MASS K_{ext}	11.72 ± 0.06	$\log M_{[\text{O III}]} / M_\odot$	—



Emission Line Measurements

Line	$\log L$ (erg s ⁻¹)	FWHM (km s ⁻¹)	σ (km s ⁻¹)	EW (Å)
H γ Narrow	39.51 ± 0.19	293 ± 63	135 ± 26	3.01 ± 0.84
Hγ Broad	—	—	—	—
[O III] 4364	39.16 ± 0.32	288 ± 63	122 ± 25	1.34 ± 0.69
He II Narrow	38.91 ± 0.41	288 ± 63	122 ± 25	0.90 ± 0.65
He II Broad	39.46 ± 0.37	2381 ± 72	1011 ± 29	3.17 ± 1.87
H β Narrow	40.07 ± 0.04	293 ± 63	135 ± 26	14.35 ± 0.82
Hβ Broad	< 40.41	—	—	—
[O III] 5007	40.49 ± 0.02	293 ± 63	135 ± 26	40.36 ± 0.87
He I Narrow	39.20 ± 0.17	288 ± 63	122 ± 25	3.04 ± 0.65
He I Broad	40.12 ± 0.10	5754 ± 71	2443 ± 29	25.38 ± 3.08
[O I] 6300	39.43 ± 0.09	288 ± 63	122 ± 25	6.08 ± 0.80
H α Narrow	40.73 ± 0.01	288 ± 63	122 ± 25	136.40 ± 0.96
Hα Broad	41.07 ± 0.01	4113 ± 214	1777 ± 28	297.83 ± 3.90
[N II] 6585	40.56 ± 0.01	288 ± 63	122 ± 25	92.81 ± 0.92
[S II] 6718	40.10 ± 0.02	288 ± 63	122 ± 25	33.41 ± 1.04
[S II] 6732	39.95 ± 0.03	288 ± 63	122 ± 25	23.84 ± 1.00

Emission Summary

H α broad SNR	4.06
H β broad SNR	0.87
H γ broad SNR	0.00
AGN frac	0.17
Host frac	0.83
$\log L_{5100, \text{Host}}$	43.25
Fe II/H β	—
Fe II/[O III]	0.36

Quality Flags

spurious_hab/hbb	0/0
15100	2
balmer	2
balmer_snr	2
hb_width	2
balmer_width	2