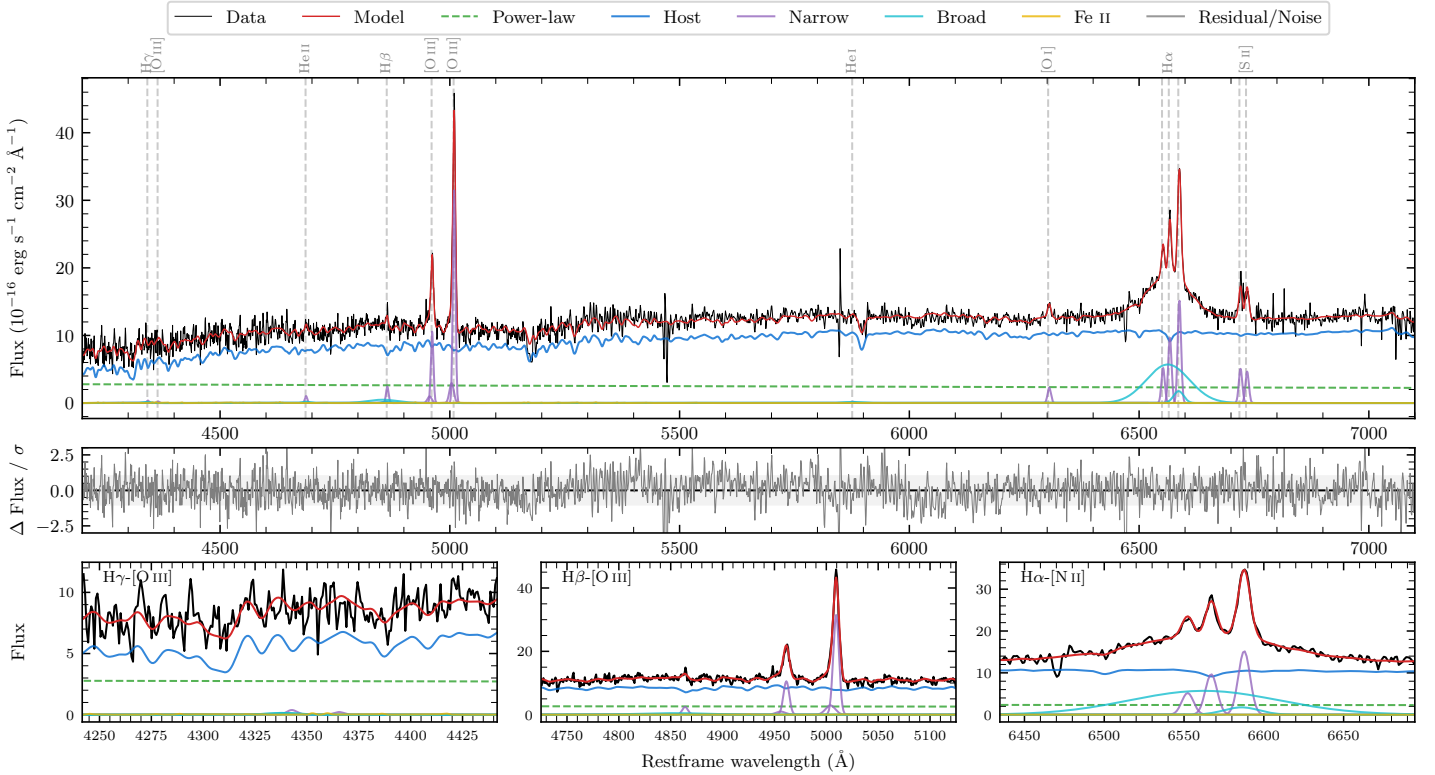
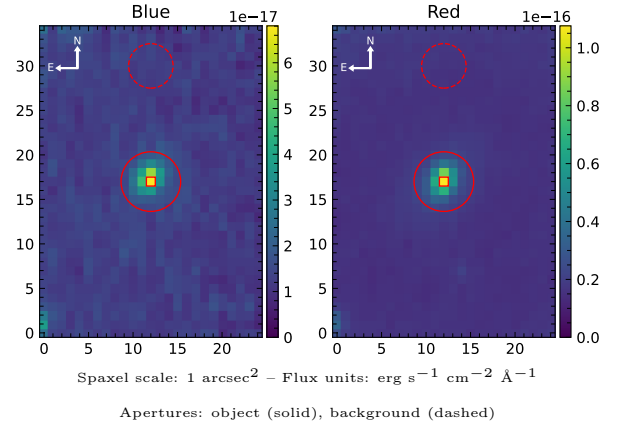


6dFGS gJ085929.7–253108

Spectrum ID	47255363_sp2	Spectrum type	Sy 1.5+
Alt name	g0859297–253108	Quality flag	good
z	0.0780	AGN reference	6dFGS
RA, Dec	134.8739, –25.5188	MW $E(B - V)$	0.215
MJD	61138.42	Power law α_ν	-1.59 ± 0.22
SNR/ \AA B/R	10.5/17.8	$\log L_{5100, \text{AGN}}$	43.29 ± 0.06
Obs airmass	1.01	$\log H\beta_{\text{Br}}/[\text{O III}]$	< -0.45
SMSS ID	47255363	$\log M_{L5100}/M_\odot$	–
Neighbour	10.5", 47255360	$\log M_{\text{H}\alpha}/M_\odot$	7.82 ± 0.04
SMSS $\langle r_6^{\text{ap}} \rangle$	16.70 ± 0.12	$\log M_{\text{H}\beta}/M_\odot$	–
2MASS K_{ext}	12.55 ± 0.10	$\log M_{[\text{O III}]} / M_\odot$	–



Emission Line Measurements

Line	$\log L$ (erg s $^{-1}$)	FWHM (km s $^{-1}$)	σ (km s $^{-1}$)	EW (Å)
H γ Narrow	–	–	–	–
Hγ Broad	–	–	–	–
[O III] 4364	–	–	–	–
He II Narrow	40.04 ± 0.27	397 ± 62	167 ± 25	2.75 ± 1.01
He II Broad	–	–	–	–
H β Narrow	40.49 ± 0.12	411 ± 63	219 ± 26	7.99 ± 1.22
Hβ Broad	< 41.17	–	–	–
[O III] 5007	41.61 ± 0.01	411 ± 63	219 ± 26	106.30 ± 1.53
He I Narrow	–	–	–	–
He I Broad	40.13 ± 0.39	2415 ± 62	1026 ± 25	3.75 ± 2.45
[O I] 6300	40.51 ± 0.07	397 ± 62	167 ± 25	9.30 ± 0.87
H α Narrow	41.15 ± 0.02	397 ± 62	167 ± 25	41.38 ± 1.05
Hα Broad	42.06 ± 0.01	4361 ± 199	1793 ± 25	332.41 ± 4.08
[N II] 6585	41.35 ± 0.02	397 ± 62	167 ± 25	65.38 ± 1.09
[S II] 6718	40.88 ± 0.06	397 ± 62	167 ± 25	22.40 ± 1.43
[S II] 6732	40.85 ± 0.04	397 ± 62	167 ± 25	20.66 ± 1.42

Emission Summary

H α broad SNR	6.39
H β broad SNR	0.70
H γ broad SNR	0.00
AGN frac	0.23
Host frac	0.77
$\log L_{5100, \text{Host}}$	43.80
Fe II/H β	–
Fe II/[O III]	–

Quality Flags

spurious_hab/hbb	0/0
15100	1
balmer	2
balmer_snr	2
hb_width	2
balmer_width	2