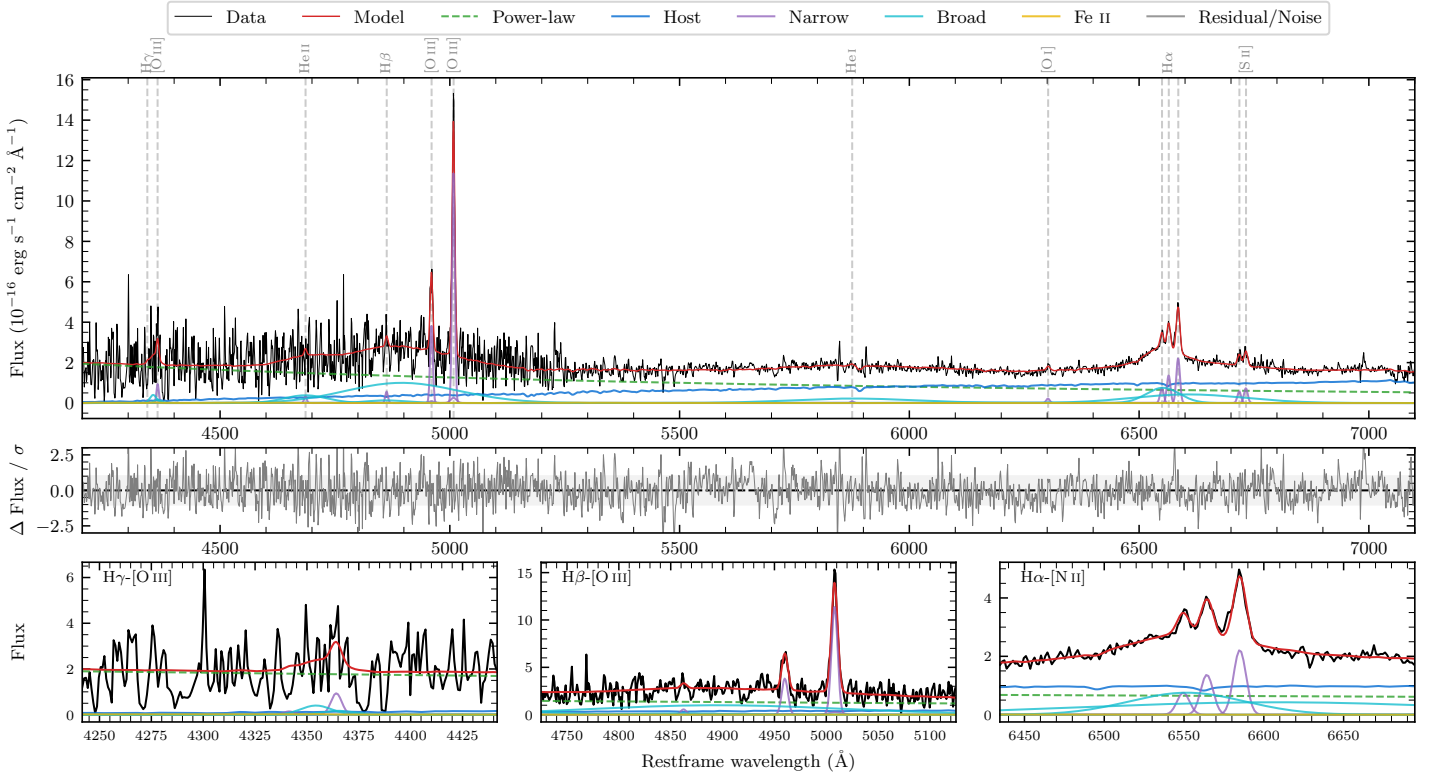
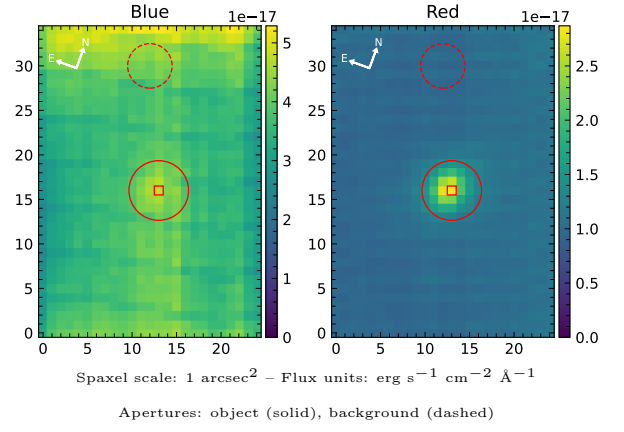


6dFGS gJ085929.7–253108

Spectrum ID	47255363_sp1	Spectrum type	Bad
Alt name	g0859297–253108	Quality flag	bad_blue
z	0.0780	AGN reference	6dFGS
RA, Dec	134.8739, –25.5188	MW $E(B - V)$	0.215
MJD	60403.42	Power law α_ν	0.47 ± 0.02
SNR/ \AA B/R	3.5/9.3	$\log L_{5100, \text{AGN}}$	42.96 ± 0.02
Obs airmass	1.01	$\log H\beta_{\text{Br}}/[\text{O III}]$	–
SMSS ID	47255363	$\log M_{L5100}/M_\odot$	–
Neighbour	10.5", 47255360	$\log M_{\text{H}\alpha}/M_\odot$	7.65 ± 0.05
SMSS $\langle r_6''_{\text{ap}} \rangle$	16.70 ± 0.12	$\log M_{\text{H}\beta}/M_\odot$	–
2MASS K_{ext}	12.55 ± 0.10	$\log M_{[\text{O III}]} / M_\odot$	–



Emission Line Measurements

Line	$\log L$ (erg s $^{-1}$)	FWHM (km s $^{-1}$)	σ (km s $^{-1}$)	EW (Angstrom)
H γ Narrow	–	–	–	–
Hγ Broad	–	–	–	–
[O III] 4364	39.99 ± 0.30	423 ± 62	178 ± 25	3.72 ± 1.46
He II Narrow	39.57 ± 0.43	423 ± 62	178 ± 25	1.71 ± 1.29
He II Broad	–	–	–	–
H β Narrow	39.84 ± 0.29	427 ± 63	192 ± 28	3.39 ± 1.77
Hβ Broad	–	–	–	–
[O III] 5007	41.16 ± 0.02	427 ± 63	192 ± 28	76.22 ± 2.36
He I Narrow	39.05 ± 0.44	423 ± 62	178 ± 25	0.89 ± 0.60
He I Broad	41.08 ± 0.05	16265 ± 62	6907 ± 25	96.45 ± 4.61
[O I] 6300	39.52 ± 0.20	423 ± 62	178 ± 25	3.15 ± 0.80
H α Narrow	40.33 ± 0.03	423 ± 62	178 ± 25	22.39 ± 0.87
Hα Broad	41.50 ± 0.02	5326 ± 239	3576 ± 65	334.38 ± 5.93
[N II] 6585	40.54 ± 0.02	423 ± 62	178 ± 25	36.70 ± 0.92
[S II] 6718	39.96 ± 0.10	423 ± 62	178 ± 25	10.12 ± 1.08
[S II] 6732	40.07 ± 0.06	423 ± 62	178 ± 25	13.12 ± 1.13

Emission Summary

H α broad SNR	2.04
H β broad SNR	0.24
H γ broad SNR	0.00
AGN frac	0.74
Host frac	0.25
$\log L_{5100, \text{Host}}$	42.50
Fe II/H β	–
Fe II/[O III]	–

Quality Flags

spurious_hab/hbb	0/2
15100	2
balmer	2
balmer_snr	2
hb_width	2
balmer_width	2