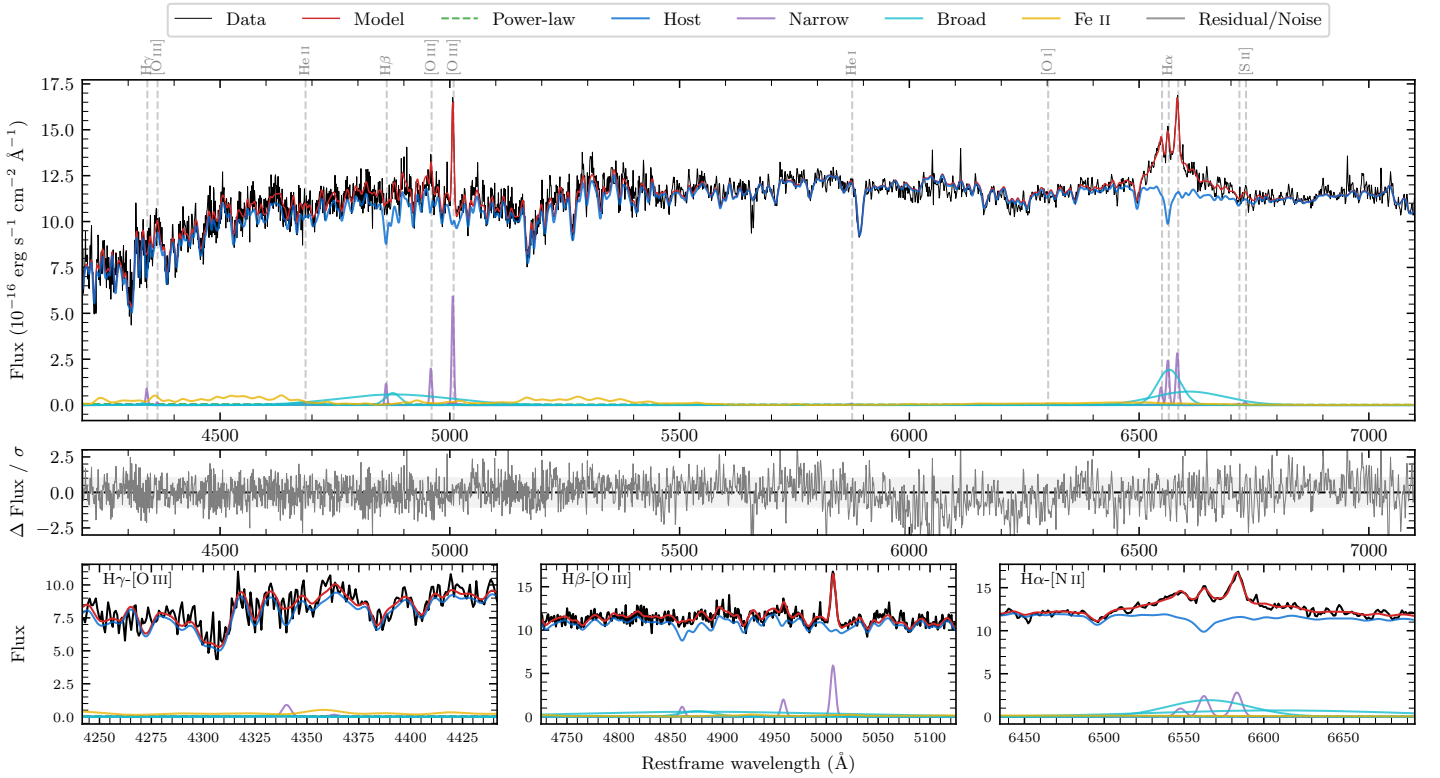
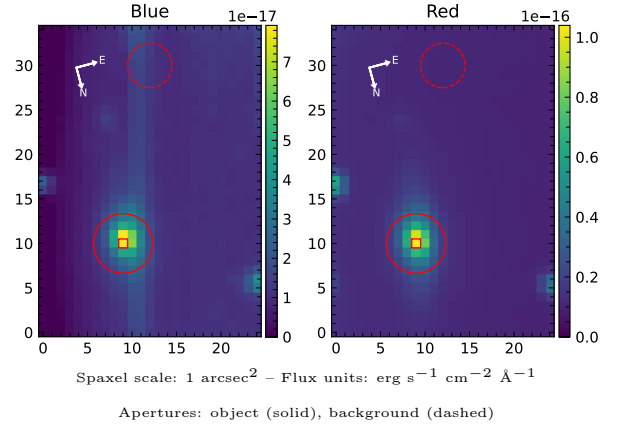


2MASX J07025618–4917442

| | | | |
|--|--------------------|--|------------------|
| Spectrum ID | 472370424_sp1 | Spectrum type | Sy 1.5 |
| Alt name | g0702562–491744 | Quality flag | good |
| z | 0.0410 | AGN reference | 6dFGS |
| RA, Dec | 105.7340, –49.2955 | MW $E(B - V)$ | 0.066 |
| MJD | 59668.46 | Power law α_ν | 0.49 ± 0.02 |
| SNR/ \AA B/R | 18.1/40.7 | $\log L_{5100, \text{AGN}}$ | 40.88 ± 0.63 |
| Obs airmass | 1.20 | $\log H\beta_{\text{Br}} / [\text{O III}]$ | -0.15 ± 0.49 |
| SMSS ID | 472370424 | $\log M_{L5100} / M_\odot$ | 6.32 ± 0.28 |
| Neighbour | 10.9", 472370423 | $\log M_{H\alpha} / M_\odot$ | 6.99 ± 0.05 |
| SMSS $\langle r_6^{\text{ap}} \rangle$ | 16.21 ± 0.03 | $\log M_{H\beta} / M_\odot$ | 6.71 ± 0.24 |
| 2MASS K_{ext} | 12.15 ± 0.07 | $\log M_{[\text{O III}]} / M_\odot$ | 6.88 ± 0.06 |



Emission Line Measurements

| Line | $\log L$ (erg s $^{-1}$) | FWHM (km s $^{-1}$) | σ (km s $^{-1}$) | EW (Å) |
|-----------------------------------|------------------------------------|---------------------------------|---------------------------------|---|
| H γ Narrow | 39.33 ± 0.23 | 339 ± 63 | 219 ± 66 | 93.39 ± 57.70 |
| Hγ Broad | — | — | — | — |
| [O III] 4364 | — | — | — | — |
| He II Narrow | — | — | — | — |
| He II Broad | — | — | — | — |
| H β Narrow | 39.47 ± 0.12 | 339 ± 63 | 219 ± 66 | 178.80 ± 59.72 |
| Hβ Broad | $40.05^{+0.88}_{-0.09}$ | 2386 ± 25 | 812 ± 25 | 667.32 ± 86.33 |
| [O III] 5007 | 40.20 ± 0.04 | 339 ± 63 | 219 ± 66 | 1008.11 ± 66.59 |
| He I Narrow | — | — | — | — |
| He I Broad | — | — | — | — |
| [O I] 6300 | — | — | — | — |
| H α Narrow | 39.89 ± 0.03 | 335 ± 62 | 141 ± 25 | 972.70 ± 42.10 |
| Hα Broad | 41.05 ± 0.02 | 3418 ± 98 | 2007 ± 39 | 14036.46 ± 212.22 |
| [N II] 6585 | 39.96 ± 0.03 | 335 ± 62 | 141 ± 25 | 1150.00 ± 44.61 |
| [S II] 6718 | — | — | — | — |
| [S II] 6732 | 38.72 ± 0.44 | 335 ± 62 | 141 ± 25 | 69.86 ± 39.58 |

Emission Summary

| | |
|------------------------------|-------|
| H α broad SNR | 4.42 |
| H β broad SNR | 1.13 |
| H γ broad SNR | 0.45 |
| AGN frac | 0.00 |
| Host frac | 1.00 |
| $\log L_{5100, \text{Host}}$ | 43.32 |
| Fe II/H β | — |
| Fe II/[O III] | — |

Quality Flags

| | |
|------------------|-----|
| spurious_hab/hbb | 0/2 |
| 15100 | 2 |
| balmer | 1 |
| balmer_snr | 2 |
| hb_width | 0 |
| balmer_width | 2 |