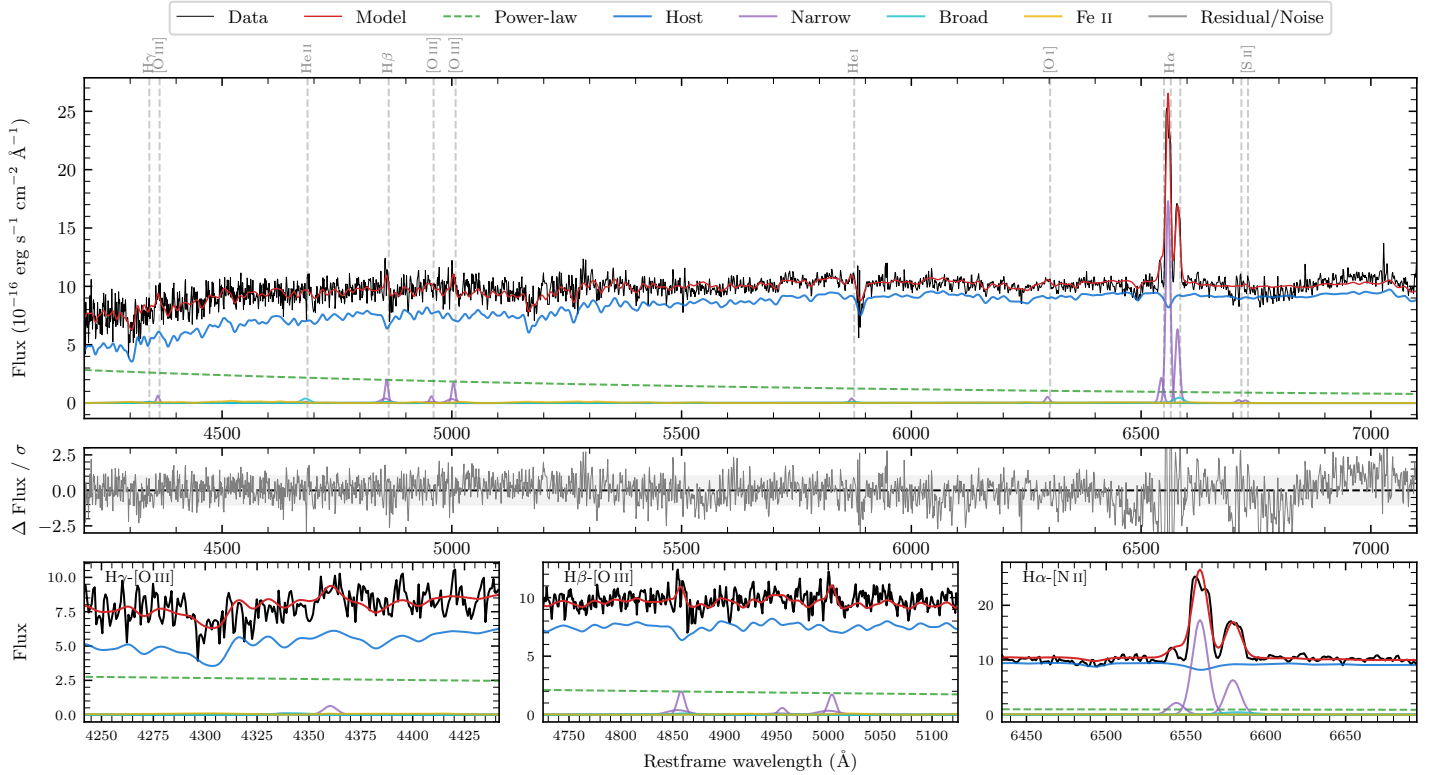
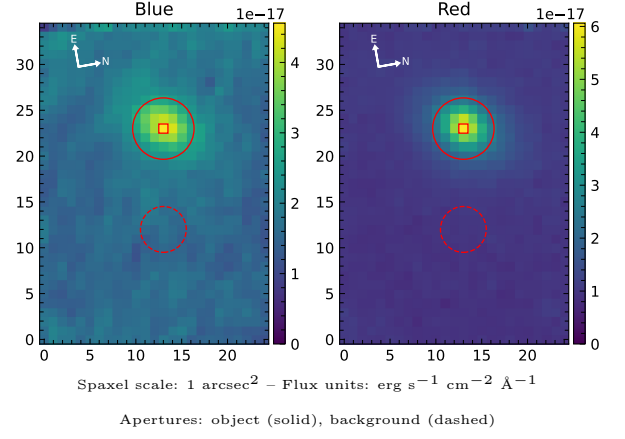


# LEDA 368789

Spectrum ID	471320933_sp1	Spectrum type	SF
Alt name	IRAS 06515-5942	Quality flag	good
$z$	0.0700	AGN reference	PGC
RA, Dec	103.0566, -59.7775	MW $E(B - V)$	0.101
MJD	61004.71	Power law $\alpha_\nu$	$0.46 \pm 0.04$
SNR/ $\text{\AA}$ B/R	10.7/21.9	$\log L_{5100, \text{AGN}}$	$43.04 \pm 0.03$
Obs airmass	1.14	$\log H\beta_{\text{Br}}/[\text{O III}]$	—
SMSS ID	471320933	$\log M_{L5100}/M_\odot$	—
Neighbour	15.0", 471320932	$\log M_{\text{H}\alpha}/M_\odot$	—
SMSS $\langle r_{6'' \text{ap}} \rangle$	$16.28 \pm 0.03$	$\log M_{\text{H}\beta}/M_\odot$	—
2MASS $K_{\text{ext}}$	$11.66 \pm 0.07$	$\log M_{[\text{O III}]} / M_\odot$	—



## Emission Line Measurements

Line	$\log L$ (erg s $^{-1}$ )	FWHM (km s $^{-1}$ )	$\sigma$ (km s $^{-1}$ )	EW (Angstrom)
H $\gamma$ Narrow	—	—	—	—
<b>H<math>\gamma</math> Broad</b>	—	—	—	—
[O III] 4364	$39.83 \pm 0.29$	$521 \pm 62$	$221 \pm 25$	$2.13 \pm 1.16$
He II Narrow	—	—	—	—
<b>He II Broad</b>	<b><math>40.08 \pm 0.29</math></b>	<b><math>1420 \pm 62</math></b>	<b><math>602 \pm 25</math></b>	<b><math>4.53 \pm 2.02</math></b>
H $\beta$ Narrow	$40.55 \pm 0.12$	$583 \pm 78$	$410 \pm 86$	$14.97 \pm 2.11$
<b>H<math>\beta</math> Broad</b>	—	—	—	—
[O III] 5007	$40.52 \pm 0.11$	$583 \pm 78$	$410 \pm 86$	$14.30 \pm 2.32$
He I Narrow	$39.76 \pm 0.29$	$521 \pm 62$	$221 \pm 25$	$3.78 \pm 1.72$
<b>He I Broad</b>	<b><math>39.53 \pm 0.52</math></b>	<b><math>1184 \pm 62</math></b>	<b><math>502 \pm 25</math></b>	<b><math>2.24 \pm 2.20</math></b>
[O I] 6300	$39.91 \pm 0.16$	$521 \pm 62$	$221 \pm 25$	$6.37 \pm 1.38$
H $\alpha$ Narrow	$41.44 \pm 0.01$	$521 \pm 62$	$221 \pm 25$	$237.62 \pm 2.13$
<b>H<math>\alpha</math> Broad</b>	—	—	—	—
[N II] 6585	$41.01 \pm 0.02$	$521 \pm 62$	$221 \pm 25$	$87.73 \pm 1.89$
[S II] 6718	$39.62 \pm 0.32$	$521 \pm 62$	$221 \pm 25$	$3.83 \pm 1.77$
[S II] 6732	$39.58 \pm 0.36$	$521 \pm 62$	$221 \pm 25$	$3.47 \pm 1.72$

## Emission Summary

H $\alpha$ broad SNR	0.55
H $\beta$ broad SNR	0.00
H $\gamma$ broad SNR	0.00
AGN frac	0.19
Host frac	0.81
$\log L_{5100, \text{Host}}$	43.67
Fe II/H $\beta$	—
Fe II/[O III]	1.23

## Quality Flags

spurious_hab/hbb	0/0
15100	2
balmer	2
balmer_snr	2
hb_width	2
balmer_width	2