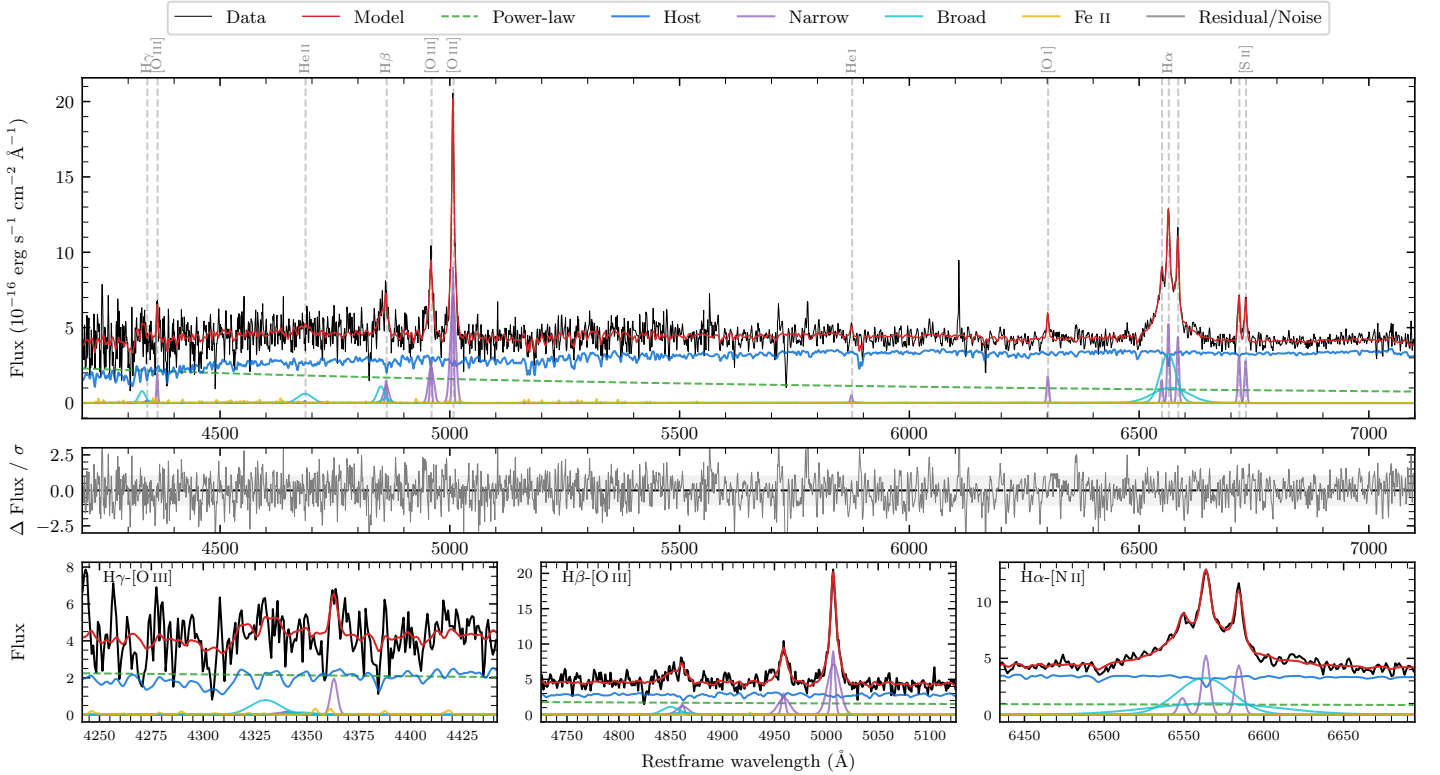
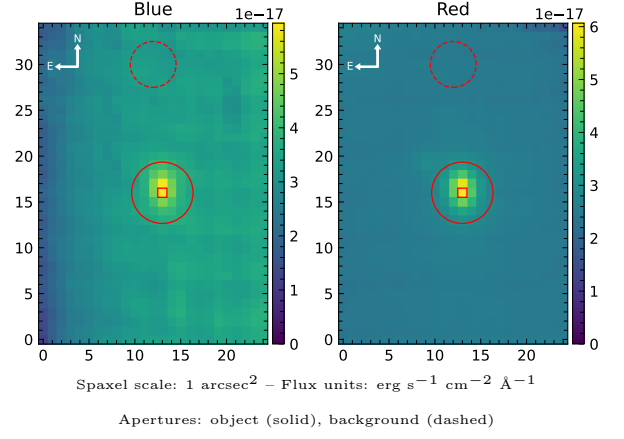


LEDA 368628

Spectrum ID	471202580_sp1	Spectrum type	Sy 1.8
Alt name	g0711491-594752	Quality flag	good
z	0.0316	AGN reference	6dFGS
RA, Dec	107.9545, -59.7978	MW $E(B - V)$	0.135
MJD	60060.39	Power law α_ν	0.10 ± 0.28
SNR/ \AA B/R	6.2/10.2	$\log L_{5100, \text{AGN}}$	42.26 ± 0.06
Obs airmass	1.25	$\log H\beta_{\text{Br}}/[\text{O III}]$	-0.67 ± 0.10
SMSS ID	471202580	$\log M_{L5100}/M_\odot$	6.40 ± 0.09
Neighbour	None $< 15''$	$\log M_{\text{H}\alpha}/M_\odot$	6.40 ± 0.06
SMSS $\langle r_6''_{\text{ap}} \rangle$	16.48 ± 0.02	$\log M_{\text{H}\beta}/M_\odot$	6.12 ± 0.12
2MASS K_{ext}	12.79 ± 0.13	$\log M_{[\text{O III}]} / M_\odot$	6.53 ± 0.10



Emission Line Measurements

Line	$\log L$ (erg s $^{-1}$)	FWHM (km s $^{-1}$)	σ (km s $^{-1}$)	EW (Angstroms)
H γ Narrow	—	—	—	—
Hγ Broad	39.63 ± 0.18	1267 ± 122	503 ± 73	8.04 ± 2.05
[O III] 4364	39.28 ± 0.16	264 ± 63	111 ± 25	3.89 ± 0.88
He II Narrow	—	—	—	—
He II Broad	39.77 ± 0.14	2404 ± 64	1021 ± 26	13.94 ± 2.52
H β Narrow	39.76 ± 0.09	394 ± 64	303 ± 26	14.53 ± 1.50
Hβ Broad	39.88 ± 0.10	1320 ± 123	493 ± 43	18.23 ± 3.62
[O III] 5007	40.55 ± 0.01	394 ± 64	303 ± 26	95.56 ± 1.61
He I Narrow	38.83 ± 0.24	264 ± 63	111 ± 25	2.58 ± 0.98
He I Broad	—	—	—	—
[O I] 6300	39.40 ± 0.07	264 ± 63	111 ± 25	11.01 ± 1.05
H α Narrow	39.89 ± 0.03	264 ± 63	111 ± 25	36.88 ± 1.16
Hα Broad	40.76 ± 0.02	2121 ± 85	963 ± 41	274.45 ± 4.67
[N II] 6585	39.81 ± 0.03	264 ± 63	111 ± 25	31.10 ± 1.16
[S II] 6718	39.68 ± 0.04	264 ± 63	111 ± 25	23.85 ± 1.30
[S II] 6732	39.63 ± 0.05	264 ± 63	111 ± 25	21.33 ± 1.30

Emission Summary

H α broad SNR	5.82
H β broad SNR	1.85
H γ broad SNR	1.13
AGN frac	0.37
Host frac	0.63
$\log L_{5100, \text{Host}}$	42.48
Fe II/H β	—
Fe II/[O III]	—

Quality Flags

spurious_hab/hbb	0/0
15100	1
balmer	1
balmer_snr	2
hb_width	0
balmer_width	2