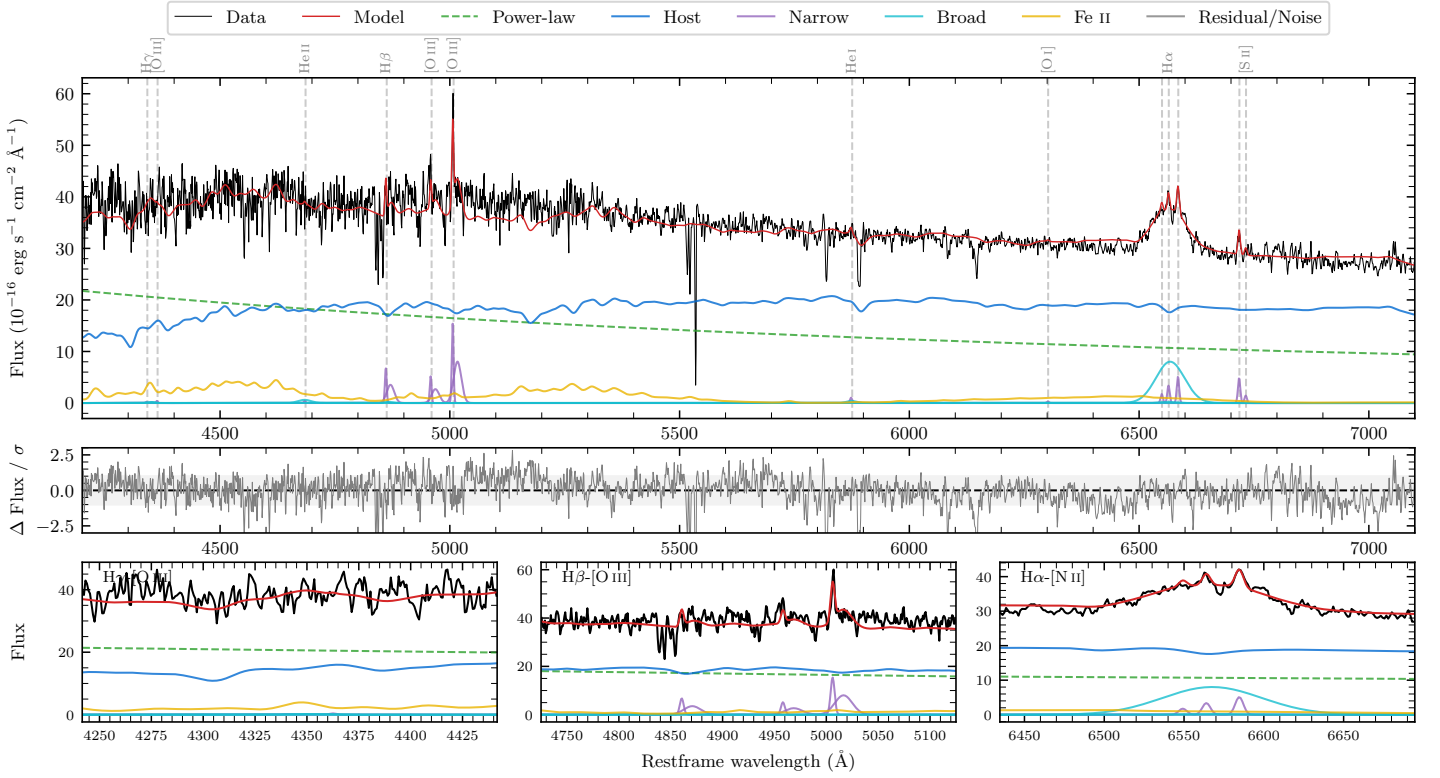
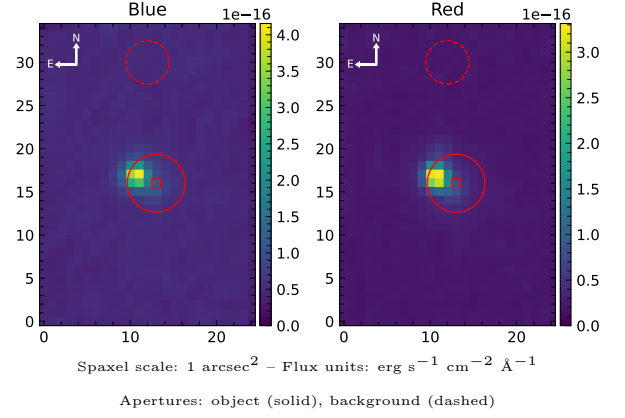


6dFGS gJ072346.9–580631

Spectrum ID	471073019_sp1	Spectrum type	Sy 1.5+
Alt name	g0723469–580631	Quality flag	good
z	0.0677	AGN reference	6dFGS
RA, Dec	110.9459, –58.1085	MW $E(B - V)$	0.125
MJD	60931.78	Power law α_ν	-0.41 ± 0.03
SNR/ \AA B/R	12.0/19.7	$\log L_{5100, \text{AGN}}$	43.96 ± 0.01
Obs airmass	1.36	$\log H\beta_{\text{Br}}/[\text{O III}]$	< -0.13
SMSS ID	471073019	$\log M_{L5100}/M_\odot$	–
Neighbour	3.9", 2671204055	$\log M_{\text{H}\alpha}/M_\odot$	7.47 ± 0.02
SMSS $\langle r_6^{\text{ap}} \rangle$	14.95 ± 0.01	$\log M_{\text{H}\beta}/M_\odot$	–
2MASS K_{ext}	nan \pm nan	$\log M_{[\text{O III}]} / M_\odot$	–



Emission Line Measurements

Line	$\log L$ (erg s $^{-1}$)	FWHM (km s $^{-1}$)	σ (km s $^{-1}$)	EW (Angstroms)
H γ Narrow	–	–	–	–
Hγ Broad	–	–	–	–
[O III] 4364	–	–	–	–
He II Narrow	–	–	–	–
He II Broad	40.42 ± 0.41	2110 ± 62	896 ± 25	1.27 ± 1.02
H β Narrow	41.10 ± 0.08	335 ± 63	511 ± 25	6.46 ± 0.83
Hβ Broad	< 41.33	–	–	–
[O III] 5007	41.47 ± 0.03	335 ± 63	511 ± 25	15.83 ± 0.89
He I Narrow	39.85 ± 0.31	275 ± 62	116 ± 25	0.49 ± 0.30
He I Broad	40.11 ± 0.42	1195 ± 62	507 ± 25	0.90 ± 0.71
[O I] 6300	–	–	–	–
H α Narrow	40.41 ± 0.13	275 ± 62	116 ± 25	2.14 ± 0.37
Hα Broad	41.89 ± 0.02	3297 ± 76	1246 ± 25	63.47 ± 1.35
[N II] 6585	40.59 ± 0.07	275 ± 62	116 ± 25	3.27 ± 0.36
[S II] 6718	40.58 ± 0.07	275 ± 62	116 ± 25	3.27 ± 0.40
[S II] 6732	40.05 ± 0.20	275 ± 62	116 ± 25	0.98 ± 0.42

Emission Summary

H α broad SNR	2.76
H β broad SNR	0.00
H γ broad SNR	0.00
AGN frac	0.47
Host frac	0.53
$\log L_{5100, \text{Host}}$	44.02
Fe II/H β	–
Fe II/[O III]	4.37

Quality Flags

spurious_hab/hbb	0/0
15100	1
balmer	2
balmer_snr	2
hb_width	2
balmer_width	2