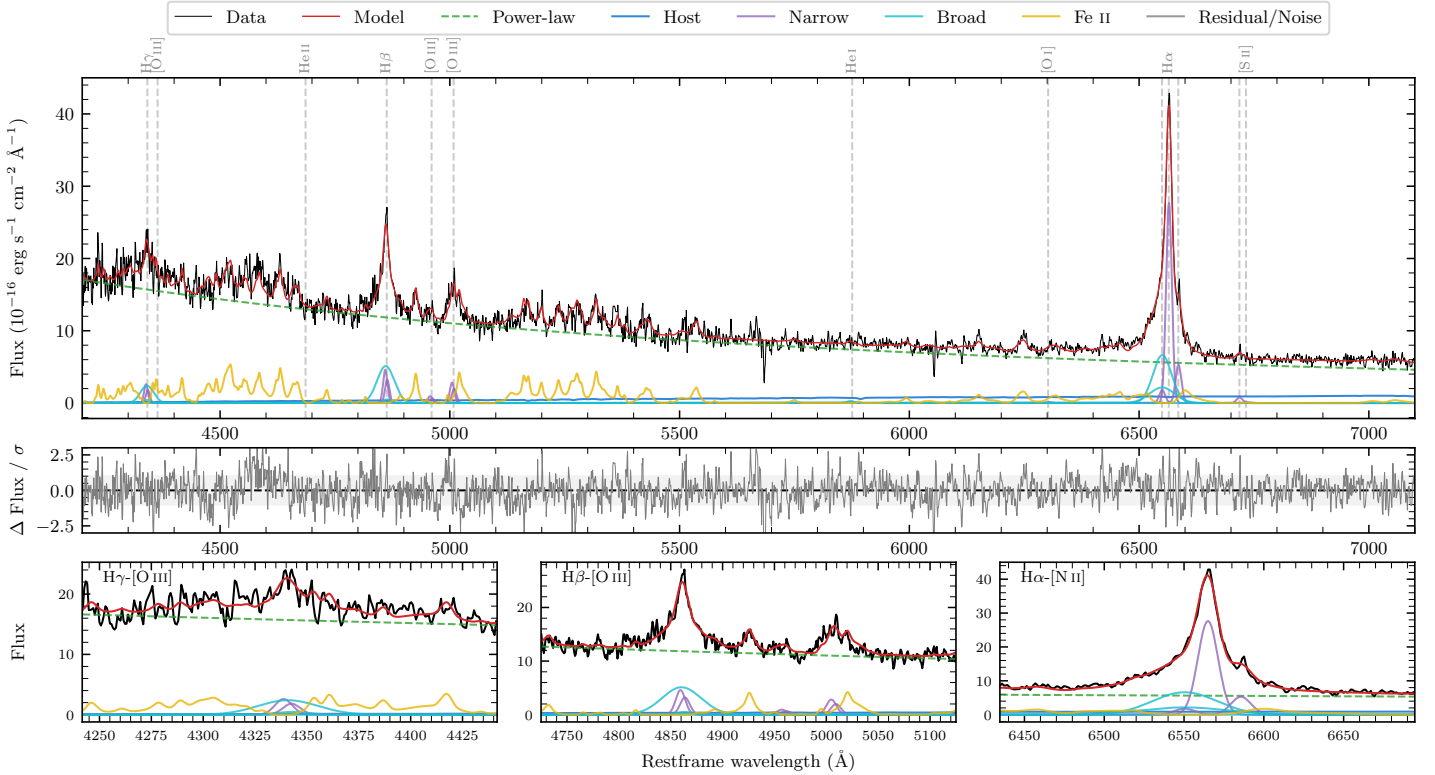
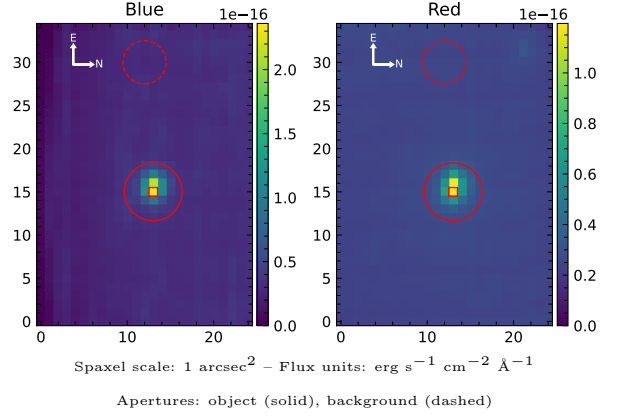


# LEDA 88588

Spectrum ID	470580122_sp1	Spectrum type	Sy 1.2
Alt name	g0708415-493306	Quality flag	good
$z$	0.0408	AGN reference	6dFGS
RA, Dec	107.1729, -49.5517	MW $E(B - V)$	0.081
MJD	60060.4	Power law $\alpha_\nu$	$0.49 \pm 0.01$
SNR/ $\text{\AA}$ B/R	12.6/11.0	$\log L_{5100, \text{AGN}}$	$43.31 \pm 0.01$
Obs airmass	1.22	$\log H\beta_{\text{Br}}/[\text{O III}]$	$0.65 \pm 0.05$
SMSS ID	470580122	$\log M_{L5100}/M_\odot$	$7.43 \pm 0.05$
Neighbour	None $< 15''$	$\log M_{H\alpha}/M_\odot$	$6.80 \pm 0.04$
SMSS $\langle r_6'' \text{ap} \rangle$	$15.51 \pm 0.04$	$\log M_{H\beta}/M_\odot$	$7.20 \pm 0.07$
2MASS $K_{\text{ext}}$	$12.24 \pm 0.09$	$\log M_{[\text{O III}]} / M_\odot$	$7.02 \pm 0.08$



## Emission Line Measurements

Line	$\log L$ ( $\text{erg s}^{-1}$ )	FWHM ( $\text{km s}^{-1}$ )	$\sigma$ ( $\text{km s}^{-1}$ )	EW ( $\text{\AA}$ )
H $\gamma$ Narrow	$40.28 \pm 0.11$	$755 \pm 63$	$316 \pm 25$	$3.06 \pm 0.28$
<b>H<math>\gamma</math> Broad</b>	<b><math>40.60 \pm 0.09</math></b>	<b><math>2097 \pm 211</math></b>	<b><math>809 \pm 33</math></b>	<b><math>6.28 \pm 0.50</math></b>
[O III] 4364	—	—	—	—
He II Narrow	—	—	—	—
<b>He II Broad</b>	—	—	—	—
H $\beta$ Narrow	$40.56 \pm 0.06$	$755 \pm 63$	$316 \pm 25$	$8.02 \pm 0.30$
<b>H<math>\beta</math> Broad</b>	<b><math>41.01 \pm 0.03</math></b>	<b><math>2563 \pm 150</math></b>	<b><math>994 \pm 26</math></b>	<b><math>22.05 \pm 0.57</math></b>
[O III] 5007	$40.36 \pm 0.04$	$755 \pm 63$	$316 \pm 25$	$5.48 \pm 0.31$
He I Narrow	$39.03 \pm 0.52$	$678 \pm 62$	$287 \pm 25$	$0.38 \pm 0.33$
<b>He I Broad</b>	<b><math>39.39 \pm 0.41</math></b>	<b><math>1178 \pm 62</math></b>	<b><math>500 \pm 25</math></b>	<b><math>0.88 \pm 0.44</math></b>
[O I] 6300	—	—	—	—
H $\alpha$ Narrow	$41.24 \pm 0.01$	$678 \pm 62$	$287 \pm 25$	$81.25 \pm 0.53$
<b>H<math>\alpha</math> Broad</b>	<b><math>41.28 \pm 0.01</math></b>	<b><math>2325 \pm 79</math></b>	<b><math>822 \pm 30</math></b>	<b><math>89.13 \pm 1.01</math></b>
[N II] 6585	$40.52 \pm 0.03$	$678 \pm 62$	$287 \pm 25$	$15.68 \pm 0.56$
[S II] 6718	$39.70 \pm 0.15$	$678 \pm 62$	$287 \pm 25$	$2.44 \pm 0.47$
[S II] 6732	—	—	—	—

## Emission Summary

H $\alpha$ broad SNR	8.30
H $\beta$ broad SNR	5.46
H $\gamma$ broad SNR	2.84
AGN frac	0.96
Host frac	0.04
$\log L_{5100, \text{Host}}$	41.89
Fe II/H $\beta$	2.71
Fe II/[O III]	11.74

## Quality Flags

spurious_hab/hbb	nan/0
15100	2
balmer	0
balmer_snr	1
hb_width	0
balmer_width	0