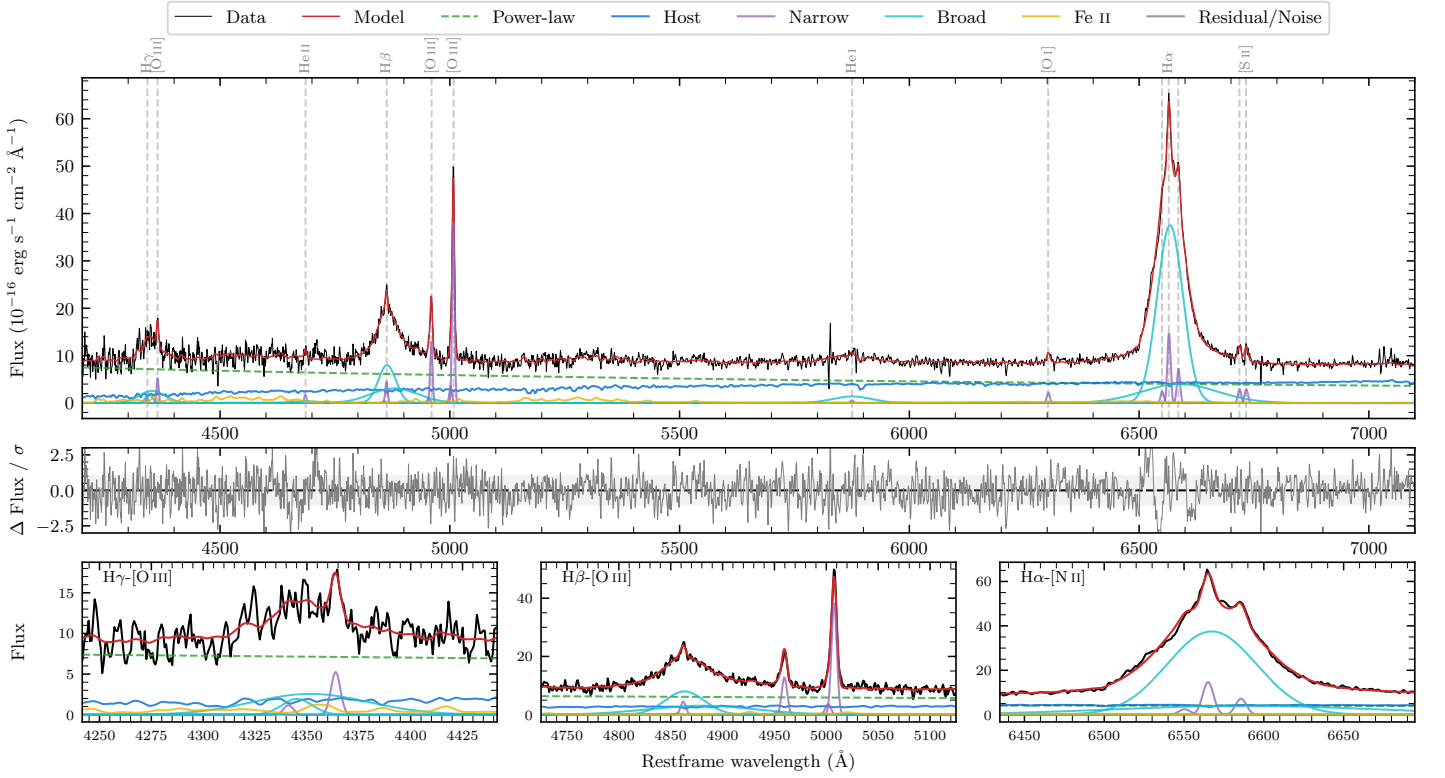
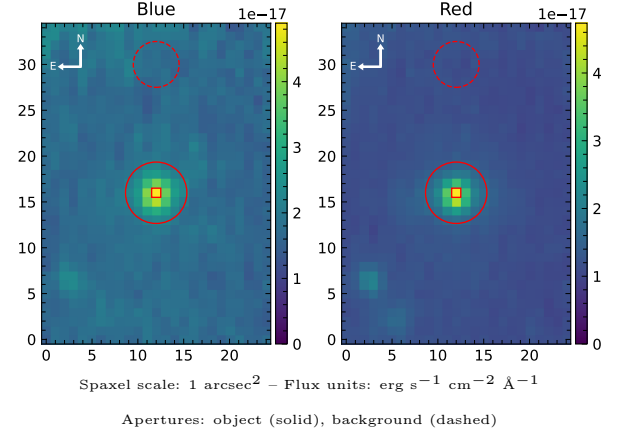


2MASS J07282338–4408241

Spectrum ID	470026228_sp1	Spectrum type	Sy 1.2
Alt name	g0728234–440824	Quality flag	good
z	0.0816	AGN reference	6dFGS
RA, Dec	112.0974, –44.1401	MW $E(B - V)$	0.302
MJD	60288.66	Power law α_ν	-0.62 ± 0.23
SNR/ \AA B/R	9.1/13.6	$\log L_{5100, \text{AGN}}$	43.68 ± 0.03
Obs airmass	1.03	$\log H\beta_{\text{Br}}/[\text{O III}]$	0.45 ± 0.02
SMSS ID	470026228	$\log M_{L5100}/M_\odot$	7.82 ± 0.04
Neighbour	13.4", 470026227	$\log M_{\text{H}\alpha}/M_\odot$	8.00 ± 0.04
SMSS $\langle r_6''_{\text{ap}} \rangle$	17.27 ± 0.20	$\log M_{\text{H}\beta}/M_\odot$	7.95 ± 0.03
2MASS K_{ext}	12.82 ± 0.13	$\log M_{[\text{O III}]} / M_\odot$	7.90 ± 0.03



Emission Line Measurements

Line	$\log L$ (erg s^{-1})	FWHM (km s^{-1})	σ (km s^{-1})	EW (\AA)
H γ Narrow	40.12 ± 0.31	380 ± 63	184 ± 26	1.10 ± 0.48
Hγ Broad	41.58 ± 0.04	2517 ± 636	1428 ± 84	32.68 ± 1.62
[O III] 4364	40.72 ± 0.08	366 ± 63	155 ± 25	4.52 ± 0.46
He II Narrow	40.28 ± 0.16	366 ± 63	155 ± 25	1.78 ± 0.41
He II Broad	40.76 ± 0.23	4275 ± 627	1815 ± 266	4.93 ± 1.37
H β Narrow	40.75 ± 0.07	380 ± 63	184 ± 26	5.53 ± 0.53
Hβ Broad	42.14 ± 0.01	3355 ± 126	1753 ± 74	137.91 ± 2.07
[O III] 5007	41.69 ± 0.01	380 ± 63	184 ± 26	50.26 ± 0.53
He I Narrow	39.89 ± 0.26	366 ± 63	155 ± 25	0.99 ± 0.52
He I Broad	41.42 ± 0.04	5099 ± 216	2165 ± 91	34.23 ± 1.71
[O I] 6300	40.51 ± 0.06	366 ± 63	155 ± 25	4.57 ± 0.45
H α Narrow	41.35 ± 0.02	366 ± 63	155 ± 25	33.69 ± 0.70
Hα Broad	42.79 ± 0.01	3197 ± 64	1406 ± 29	927.04 ± 2.85
[N II] 6585	41.04 ± 0.03	366 ± 63	155 ± 25	16.65 ± 0.66
[S II] 6718	40.67 ± 0.05	366 ± 63	155 ± 25	7.20 ± 0.69
[S II] 6732	40.67 ± 0.06	366 ± 63	155 ± 25	7.19 ± 0.72

Emission Summary

H α broad SNR	37.59
H β broad SNR	9.92
H γ broad SNR	4.03
AGN frac	0.68
Host frac	0.32
$\log L_{5100, \text{Host}}$	43.36
Fe II/H β	0.33
Fe II/[O III]	0.95

Quality Flags

spurious_hab/hbb	0/0
15100	0
balmer	0
balmer_snr	0
hb_width	1
balmer_width	0