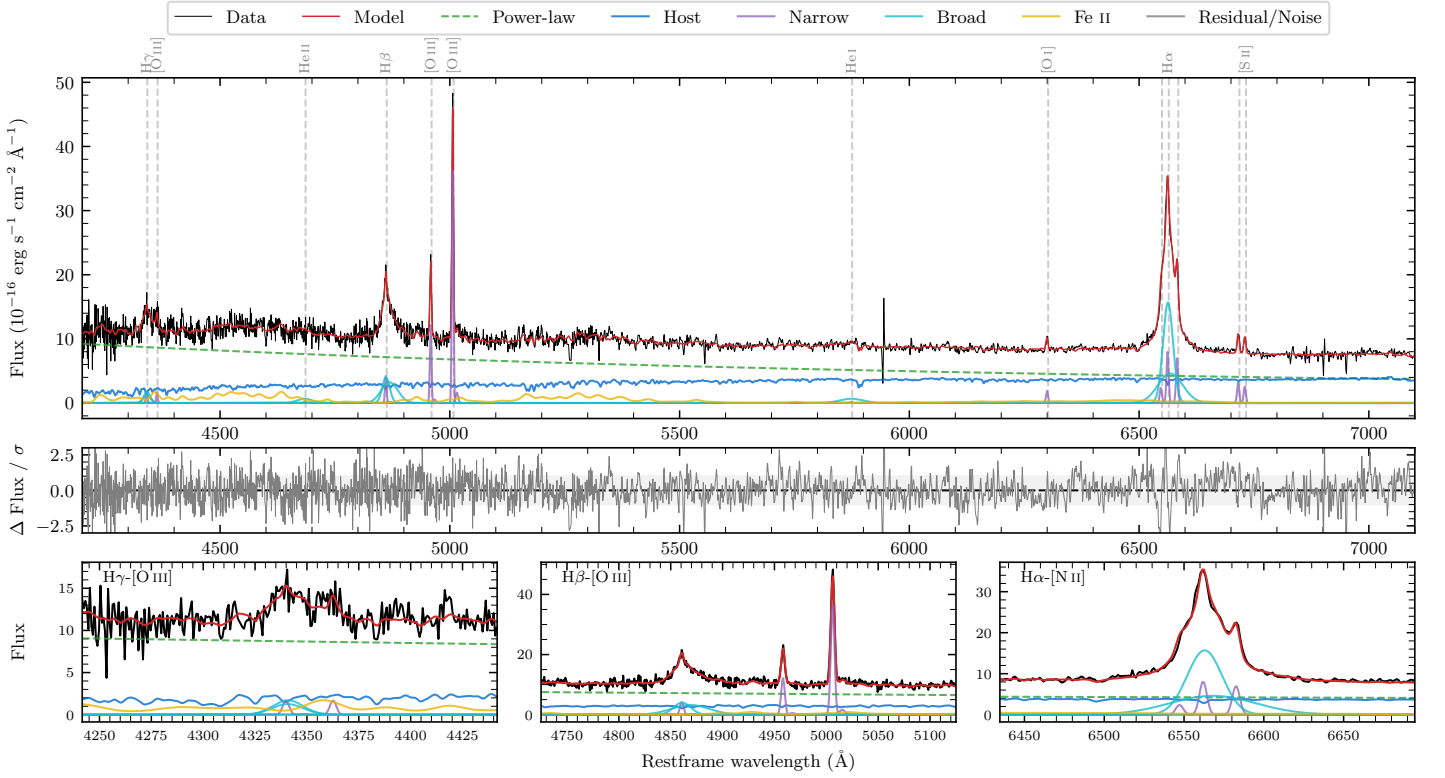
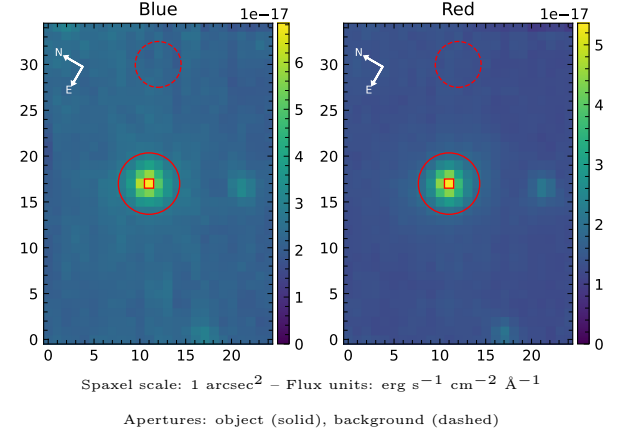


2MASS J08025394–5821372

Spectrum ID	467574241_sp1	Spectrum type	Sy 1.5
Alt name	g0802539–582137	Quality flag	good
z	0.0599	AGN reference	6dFGS
RA, Dec	120.7248, –58.3603	MW $E(B - V)$	0.222
MJD	60255.72	Power law α_ν	-0.26 ± 0.12
SNR/ \AA B/R	12.4/18.6	$\log L_{5100, \text{AGN}}$	43.47 ± 0.02
Obs airmass	1.16	$\log H\beta_{\text{Br}}/[\text{O III}]$	0.12 ± 0.02
SMSS ID	467574241	$\log M_{L5100}/M_\odot$	7.11 ± 0.06
Neighbour	10.3", 467574240	$\log M_{\text{H}\alpha}/M_\odot$	6.68 ± 0.04
SMSS $\langle r_{6''}^{\text{ap}} \rangle$	17.01 ± 0.08	$\log M_{\text{H}\beta}/M_\odot$	6.97 ± 0.06
2MASS K_{ext}	12.47 ± 0.12	$\log M_{[\text{O III}]} / M_\odot$	7.05 ± 0.06



Emission Line Measurements

Line	$\log L$ (erg s^{-1})	FWHM (km s^{-1})	σ (km s^{-1})	EW (\AA)
H γ Narrow	39.81 ± 0.26	254 ± 63	177 ± 29	0.85 ± 0.33
Hγ Broad	40.73 ± 0.07	1200 ± 65	432 ± 25	6.70 ± 0.55
[O III] 4364	39.78 ± 0.20	253 ± 63	106 ± 25	0.80 ± 0.24
He II Narrow	–	–	–	–
He II Broad	40.42 ± 0.14	2473 ± 82	1050 ± 34	3.96 ± 0.74
H β Narrow	40.26 ± 0.09	254 ± 63	177 ± 29	2.90 ± 0.31
Hβ Broad	41.33 ± 0.02	1658 ± 108	753 ± 31	34.00 ± 0.79
[O III] 5007	41.21 ± 0.01	254 ± 63	177 ± 29	27.17 ± 0.35
He I Narrow	–	–	–	–
He I Broad	40.58 ± 0.07	2959 ± 72	1256 ± 29	8.55 ± 0.80
[O I] 6300	39.99 ± 0.06	253 ± 63	106 ± 25	2.45 ± 0.21
H α Narrow	40.65 ± 0.03	253 ± 63	106 ± 25	11.92 ± 0.32
Hα Broad	41.84 ± 0.01	1367 ± 64	598 ± 25	185.77 ± 0.97
[N II] 6585	40.58 ± 0.02	253 ± 63	106 ± 25	10.35 ± 0.31
[S II] 6718	40.26 ± 0.03	253 ± 63	106 ± 25	5.05 ± 0.25
[S II] 6732	40.16 ± 0.04	253 ± 63	106 ± 25	4.05 ± 0.26

Emission Summary

H α broad SNR	23.66
H β broad SNR	8.24
H γ broad SNR	3.62
AGN frac	0.71
Host frac	0.29
$\log L_{5100, \text{Host}}$	43.09
Fe II/H β	1.57
Fe II/[O III]	2.06

Quality Flags

spurious_hab/hbb	0/0
15100	0
balmer	0
balmer_snr	0
hb_width	0
balmer_width	0