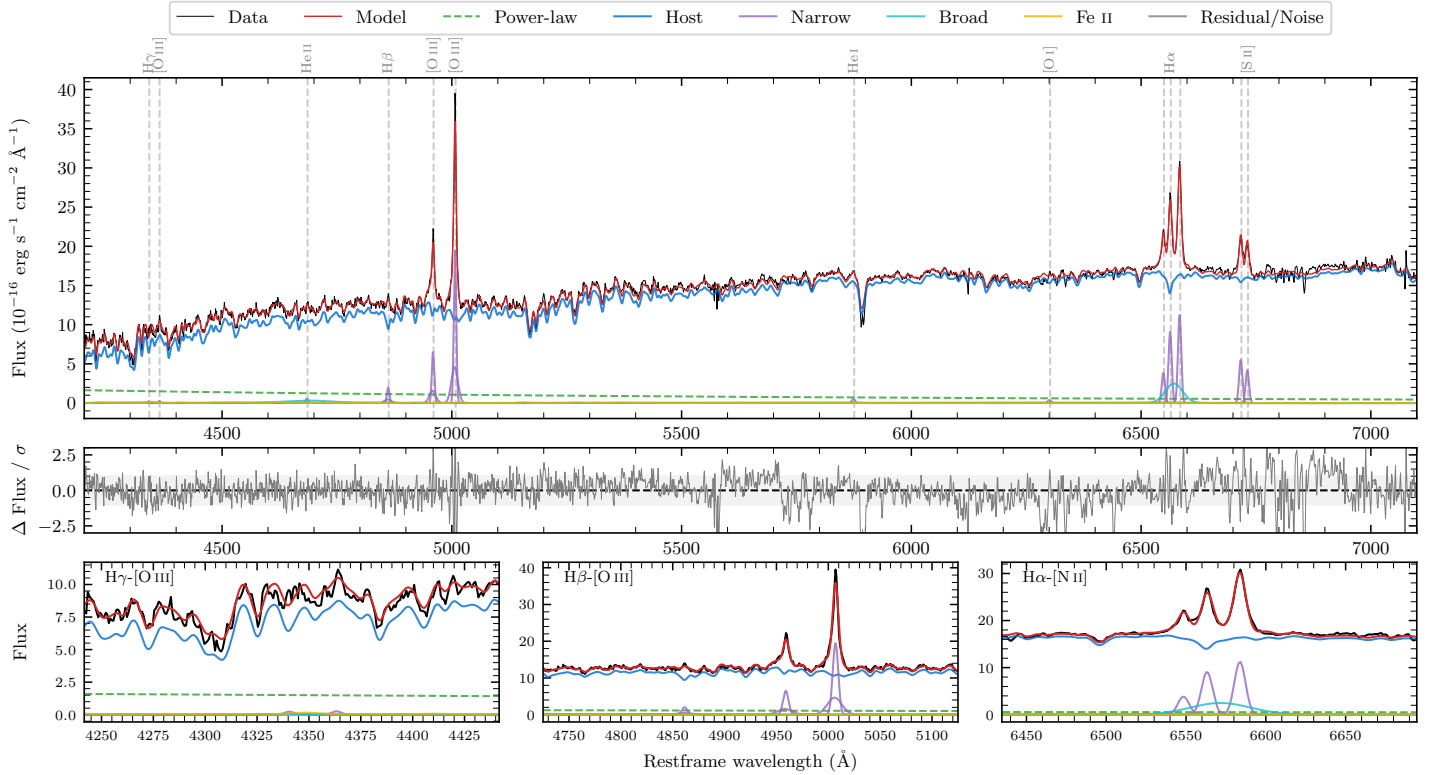
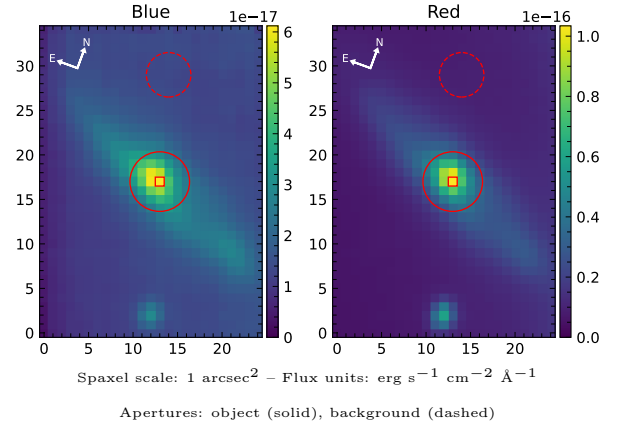


# ESO 87–36

Spectrum ID	464777255_sp1	Spectrum type	Sy 1.8+
Alt name	g0643065–641530	Quality flag	good
$z$	0.0284	AGN reference	6dFGS
RA, Dec	100.7771, –64.2586	MW $E(B - V)$	0.060
MJD	60352.47	Power law $\alpha_\nu$	$0.48 \pm 0.02$
SNR/ $\text{\AA}$ B/R	24.5/46.6	$\log L_{5100, \text{AGN}}$	$41.98 \pm 0.02$
Obs airmass	1.19	$\log H\beta_{\text{Br}}/[\text{O III}]$	$< -1.01$
SMSS ID	464777255	$\log M_{L5100}/M_\odot$	–
Neighbour	0.5", 2663140628	$\log M_{\text{H}\alpha}/M_\odot$	$6.14 \pm 0.07$
SMSS $\langle r_{6'' \text{ap}} \rangle$	$15.78 \pm 0.03$	$\log M_{\text{H}\beta}/M_\odot$	–
2MASS $K_{\text{ext}}$	$10.74 \pm 0.06$	$\log M_{[\text{O III}]} / M_\odot$	–



## Emission Line Measurements

Line	$\log L$ (erg s $^{-1}$ )	FWHM (km s $^{-1}$ )	$\sigma$ (km s $^{-1}$ )	EW (Å)
H $\gamma$ Narrow	$38.63 \pm 0.47$	$425 \pm 63$	$289 \pm 26$	$1.49 \pm 1.49$
<b>H<math>\gamma</math> Broad</b>	–	–	–	–
[O III] 4364	$38.47 \pm 0.46$	$375 \pm 62$	$159 \pm 25$	$1.05 \pm 0.87$
He II Narrow	$38.87 \pm 0.23$	$375 \pm 62$	$159 \pm 25$	$3.18 \pm 1.12$
<b>He II Broad</b>	<b><math>39.93 \pm 0.11</math></b>	<b><math>8197 \pm 62</math></b>	<b><math>3481 \pm 25</math></b>	<b><math>36.02 \pm 4.61</math></b>
H $\beta$ Narrow	$39.62 \pm 0.07$	$425 \pm 63$	$290 \pm 26$	$19.35 \pm 1.66$
<b>H<math>\beta</math> Broad</b>	$< 39.60$	–	–	–
[O III] 5007	$40.61 \pm 0.01$	$425 \pm 63$	$290 \pm 26$	$205.41 \pm 1.96$
He I Narrow	$38.94 \pm 0.17$	$375 \pm 62$	$159 \pm 25$	$6.50 \pm 1.30$
<b>He I Broad</b>	–	–	–	–
[O I] 6300	$38.80 \pm 0.21$	$375 \pm 62$	$159 \pm 25$	$5.69 \pm 1.61$
H $\alpha$ Narrow	$40.19 \pm 0.01$	$375 \pm 62$	$159 \pm 25$	$151.51 \pm 1.99$
<b>H<math>\alpha</math> Broad</b>	<b><math>40.38 \pm 0.03</math></b>	<b><math>2051 \pm 67</math></b>	<b><math>788 \pm 53</math></b>	<b><math>236.53 \pm 5.13</math></b>
[N II] 6585	$40.28 \pm 0.01$	$375 \pm 62$	$159 \pm 25$	$189.37 \pm 2.02$
[S II] 6718	$39.98 \pm 0.02$	$375 \pm 62$	$159 \pm 25$	$99.80 \pm 2.32$
[S II] 6732	$39.86 \pm 0.02$	$375 \pm 62$	$159 \pm 25$	$76.00 \pm 2.28$

## Emission Summary

H $\alpha$ broad SNR	4.82
H $\beta$ broad SNR	0.34
H $\gamma$ broad SNR	0.00
AGN frac	0.08
Host frac	0.92
$\log L_{5100, \text{Host}}$	43.03
Fe II/H $\beta$	–
Fe II/[O III]	0.09

## Quality Flags

spurious_hab/hbb	0/0
15100	2
balmer	2
balmer_snr	2
hb_width	2
balmer_width	2