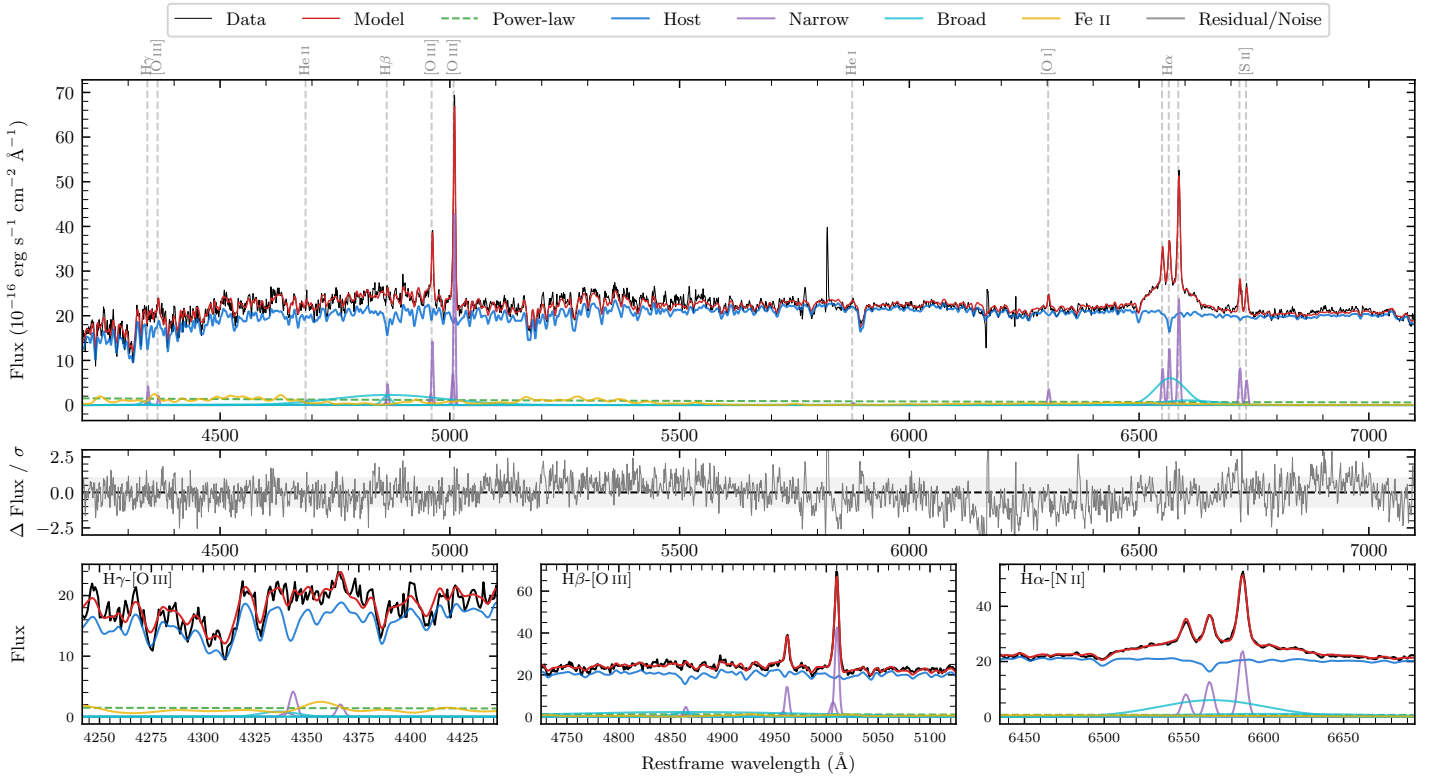
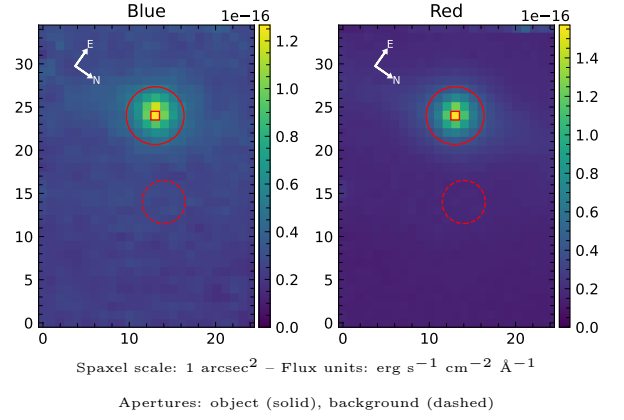


# AM 0656–745

Spectrum ID	464075321_sp1	Spectrum type	Sy 1.8
Alt name	g0655288–750206	Quality flag	good
$z$	0.0213	AGN reference	6dFGS
RA, Dec	103.8698, –75.0350	MW $E(B - V)$	0.116
MJD	60611.71	Power law $\alpha_\nu$	$-0.22 \pm 0.42$
SNR/Å B/R	17.4/33.3	$\log L_{5100, \text{AGN}}$	$41.76 \pm 0.08$
Obs airmass	1.41	$\log H\beta_{\text{Br}} / [\text{O III}]$	$-0.73 \pm 0.65$
SMSS ID	464075321	$\log M_{L5100} / M_\odot$	$6.24 \pm 0.06$
Neighbour	None $< 15''$	$\log M_{\text{H}\alpha} / M_\odot$	$6.98 \pm 0.05$
SMSS $\langle r_6'' \text{ ap} \rangle$	$15.91 \pm 0.14$	$\log M_{\text{H}\beta} / M_\odot$	$6.11 \pm 0.32$
2MASS $K_{\text{ext}}$	nan $\pm$ nan	$\log M_{[\text{O III}]} / M_\odot$	$6.54 \pm 0.06$



## Emission Line Measurements

Line	$\log L$ (erg s $^{-1}$ )	FWHM (km s $^{-1}$ )	$\sigma$ (km s $^{-1}$ )	EW (Å)
H $\gamma$ Narrow	$39.37 \pm 0.13$	$305 \pm 63$	$151 \pm 25$	$15.56 \pm 2.90$
<b>H<math>\gamma</math> Broad</b>	—	—	—	—
[O III] 4364	$38.98 \pm 0.31$	$279 \pm 63$	$117 \pm 25$	$6.37 \pm 2.76$
He II Narrow	$38.76 \pm 0.31$	$279 \pm 63$	$117 \pm 25$	$4.40 \pm 2.17$
<b>He II Broad</b>	—	—	—	—
H $\beta$ Narrow	$39.48 \pm 0.09$	$305 \pm 63$	$151 \pm 25$	$24.13 \pm 2.60$
<b>H<math>\beta</math> Broad</b>	$39.72^{+1.19}_{-0.12}$	<b><math>1416 \pm 38</math></b>	<b><math>532 \pm 25</math></b>	<b><math>42.06 \pm 5.21</math></b>
[O III] 5007	$40.45 \pm 0.01$	$305 \pm 63$	$151 \pm 25$	$238.23 \pm 2.83$
He I Narrow	$38.53 \pm 0.30$	$279 \pm 63$	$117 \pm 25$	$3.91 \pm 1.74$
<b>He I Broad</b>	—	—	—	—
[O I] 6300	$39.38 \pm 0.05$	$279 \pm 63$	$117 \pm 25$	$30.71 \pm 2.22$
H $\alpha$ Narrow	$39.95 \pm 0.02$	$279 \pm 63$	$117 \pm 25$	$123.32 \pm 2.42$
<b>H<math>\alpha</math> Broad</b>	<b><math>40.86 \pm 0.01</math></b>	<b><math>3850 \pm 86</math></b>	<b><math>1583 \pm 51</math></b>	<b><math>1011.20 \pm 12.09</math></b>
[N II] 6585	$40.22 \pm 0.01$	$279 \pm 63$	$117 \pm 25$	$234.05 \pm 2.61$
[S II] 6718	$39.78 \pm 0.03$	$279 \pm 63$	$117 \pm 25$	$86.53 \pm 2.99$
[S II] 6732	$39.60 \pm 0.04$	$279 \pm 63$	$117 \pm 25$	$57.86 \pm 3.17$

## Emission Summary

H $\alpha$ broad SNR	5.32
H $\beta$ broad SNR	1.50
H $\gamma$ broad SNR	0.73
AGN frac	0.05
Host frac	0.95
$\log L_{5100, \text{Host}}$	43.01
Fe II/H $\beta$	—
Fe II/[O III]	—

## Quality Flags

spurious_hab/hbb	0/1
15100	2
balmer	1
balmer_snr	2
hb_width	0
balmer_width	2