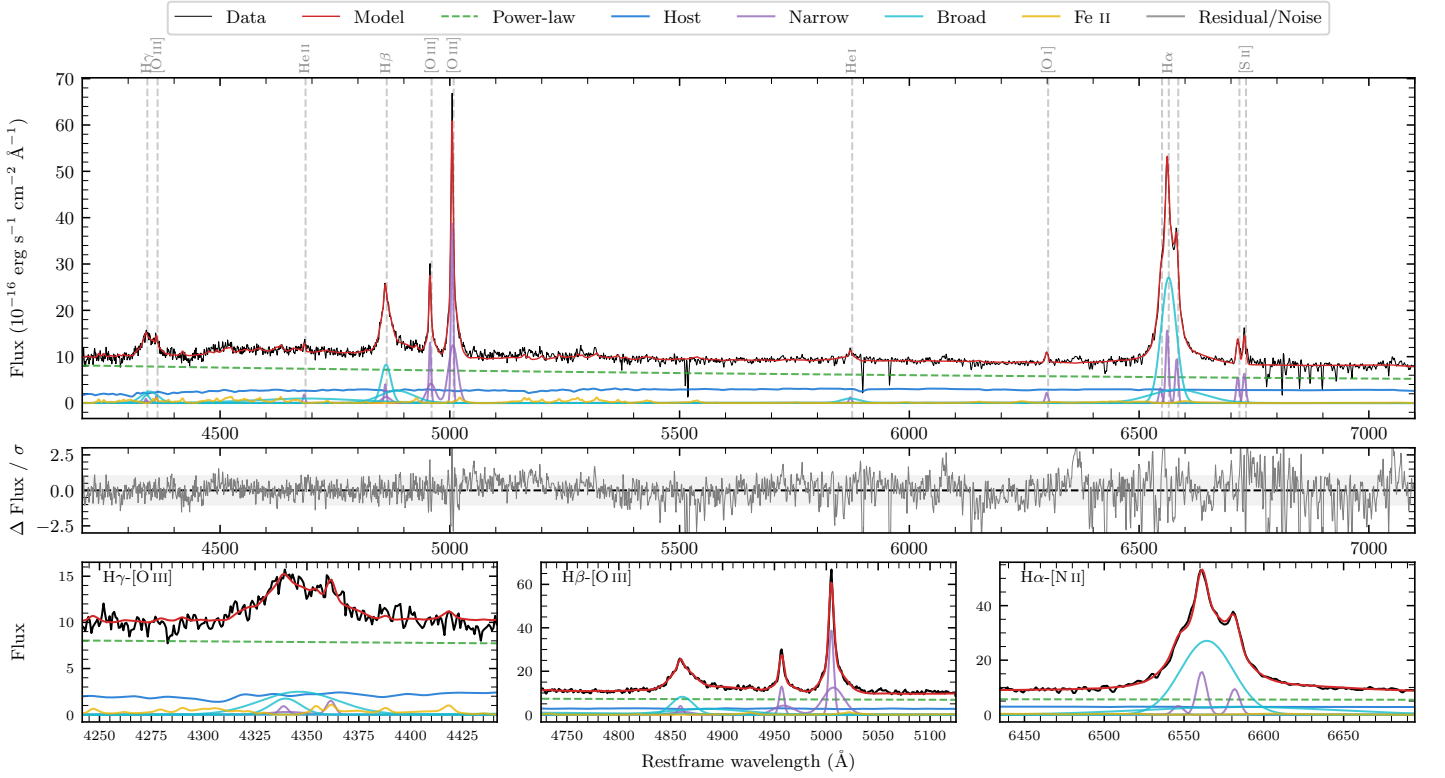
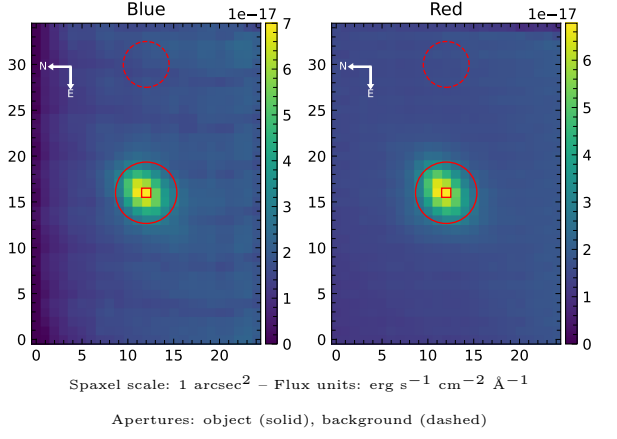


# LEDA 1069761

Spectrum ID	4585382_sp1	Spectrum type	Sy 1.5
Alt name	g2108089-033303	Quality flag	good
$z$	0.0679	AGN reference	6dFGS
RA, Dec	317.0369, -3.5509	MW $E(B - V)$	0.064
MJD	60450.8	Power law $\alpha_\nu$	$-1.16 \pm 0.06$
SNR/ $\text{\AA}$ B/R	9.7/17.0	$\log L_{5100, \text{AGN}}$	$43.60 \pm 0.02$
Obs airmass	1.13	$\log H\beta_{\text{Br}}/[\text{O III}]$	$-0.07 \pm 0.02$
SMSS ID	4585382	$\log M_{L5100}/M_\odot$	$7.27 \pm 0.05$
Neighbour	11.8", 4585383	$\log M_{\text{H}\alpha}/M_\odot$	$7.22 \pm 0.03$
SMSS $\langle r_6''_{\text{ap}} \rangle$	$16.05 \pm 0.04$	$\log M_{\text{H}\beta}/M_\odot$	$7.26 \pm 0.05$
2MASS $K_{\text{ext}}$	$12.38 \pm 0.10$	$\log M_{[\text{O III}]} / M_\odot$	$7.45 \pm 0.05$



## Emission Line Measurements

Line	$\log L$ ( $\text{erg s}^{-1}$ )	FWHM ( $\text{km s}^{-1}$ )	$\sigma$ ( $\text{km s}^{-1}$ )	EW ( $\text{\AA}$ )
H $\gamma$ Narrow	$40.14 \pm 0.37$	$418 \pm 63$	$464 \pm 26$	$1.55 \pm 0.78$
<b>H<math>\gamma</math> Broad</b>	<b><math>41.25 \pm 0.06</math></b>	<b><math>2091 \pm 468</math></b>	<b><math>954 \pm 83</math></b>	<b><math>20.12 \pm 1.21</math></b>
[O III] 4364	$39.98 \pm 0.26$	$345 \pm 63$	$146 \pm 25$	$1.08 \pm 0.40$
He II Narrow	$40.11 \pm 0.16$	$345 \pm 63$	$146 \pm 25$	$1.53 \pm 0.37$
<b>He II Broad</b>	<b><math>41.54 \pm 0.05</math></b>	<b><math>17659 \pm 63</math></b>	<b><math>7499 \pm 25</math></b>	<b><math>41.61 \pm 2.85</math></b>
H $\beta$ Narrow	$40.83 \pm 0.10$	$418 \pm 63$	$464 \pm 26$	$8.33 \pm 0.75$
<b>H<math>\beta</math> Broad</b>	<b><math>41.75 \pm 0.02</math></b>	<b><math>1861 \pm 99</math></b>	<b><math>1255 \pm 50</math></b>	<b><math>70.21 \pm 1.52</math></b>
[O III] 5007	$41.82 \pm 0.01$	$418 \pm 63$	$464 \pm 26$	$84.10 \pm 0.83$
He I Narrow	$40.03 \pm 0.12$	$345 \pm 63$	$146 \pm 25$	$1.56 \pm 0.25$
<b>He I Broad</b>	<b><math>40.78 \pm 0.06</math></b>	<b><math>2447 \pm 168</math></b>	<b><math>1039 \pm 71</math></b>	<b><math>8.74 \pm 0.67</math></b>
[O I] 6300	$40.31 \pm 0.05$	$345 \pm 63$	$146 \pm 25$	$3.11 \pm 0.24$
H $\alpha$ Narrow	$41.18 \pm 0.02$	$345 \pm 63$	$146 \pm 25$	$24.15 \pm 0.33$
<b>H<math>\alpha</math> Broad</b>	<b><math>42.27 \pm 0.01</math></b>	<b><math>1892 \pm 64</math></b>	<b><math>912 \pm 25</math></b>	<b><math>296.57 \pm 1.29</math></b>
[N II] 6585	$40.96 \pm 0.02$	$345 \pm 63$	$146 \pm 25$	$14.55 \pm 0.30$
[S II] 6718	$40.73 \pm 0.02$	$345 \pm 63$	$146 \pm 25$	$8.68 \pm 0.31$
[S II] 6732	$40.80 \pm 0.02$	$345 \pm 63$	$146 \pm 25$	$10.22 \pm 0.34$

## Emission Summary

H $\alpha$ broad SNR	28.37
H $\beta$ broad SNR	9.94
H $\gamma$ broad SNR	3.95
AGN frac	0.72
Host frac	0.28
$\log L_{5100, \text{Host}}$	43.19
Fe II/H $\beta$	0.38
Fe II/[O III]	0.32

## Quality Flags

spurious_hab/hbb	0/0
15100	0
balmer	0
balmer_snr	0
hb_width	1
balmer_width	1