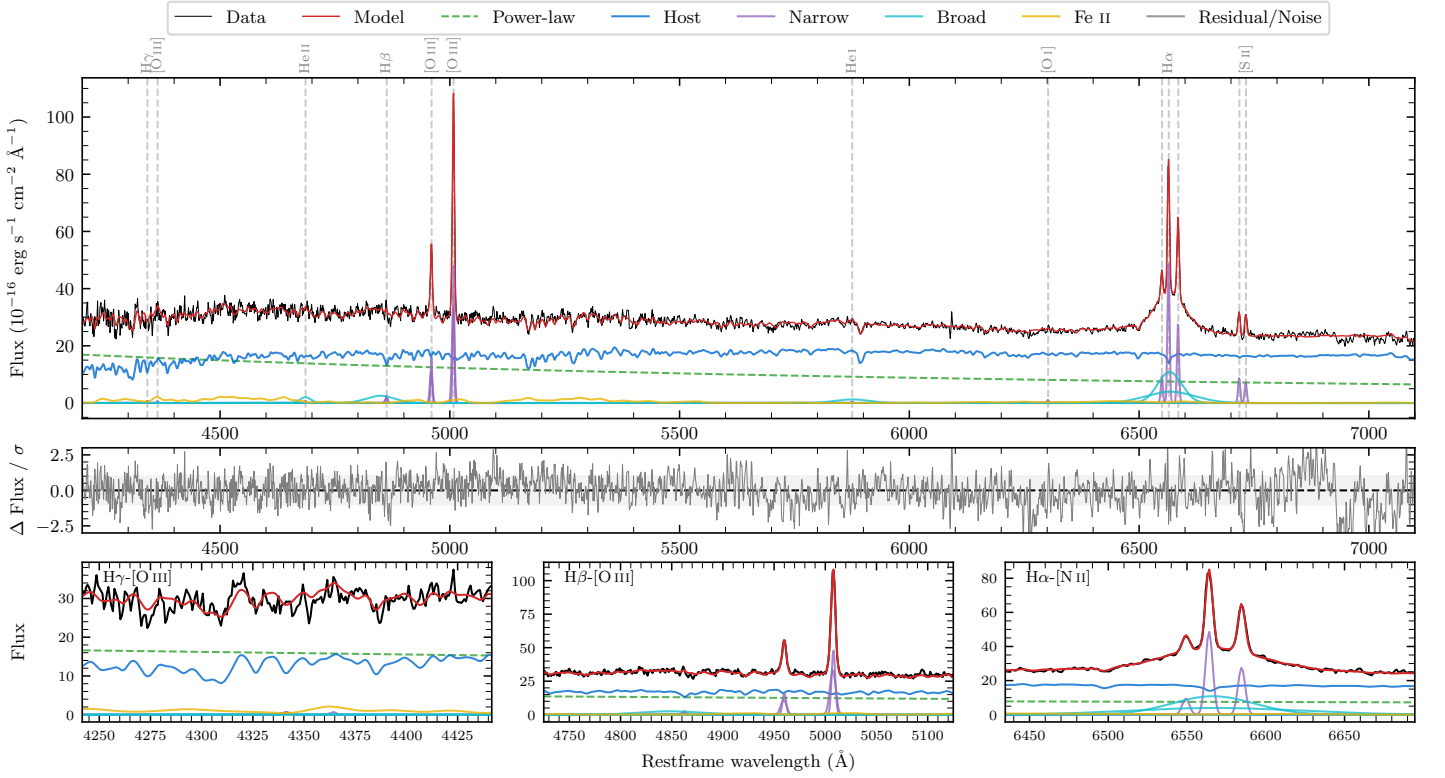
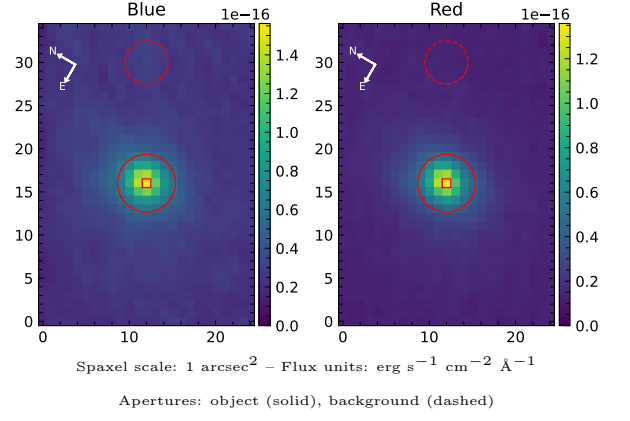


# 1RXS J083017.0–672520

Spectrum ID	458472155_sp1	Spectrum type	Sy 1.5
Alt name	g0830165–672529	Quality flag	good
$z$	0.0347	AGN reference	6dFGS
RA, Dec	127.5690, –67.4248	MW $E(B - V)$	0.102
MJD	60286.71	Power law $\alpha_\nu$	$-0.18 \pm 0.07$
SNR/ $\text{\AA}$ B/R	19.3/34.2	$\log L_{5100, \text{AGN}}$	$43.23 \pm 0.01$
Obs airmass	1.24	$\log H\beta_{\text{Br}}/[\text{O III}]$	$-0.35 \pm 0.05$
SMSS ID	458472155	$\log M_{L5100}/M_\odot$	$7.87 \pm 0.03$
Neighbour	None $< 15''$	$\log M_{\text{H}\alpha}/M_\odot$	$7.27 \pm 0.03$
SMSS $\langle r_6 \rangle_{\text{ap}}$	$15.22 \pm 0.07$	$\log M_{\text{H}\beta}/M_\odot$	$7.57 \pm 0.06$
2MASS $K_{\text{ext}}$	$11.32 \pm 0.06$	$\log M_{[\text{O III}]} / M_\odot$	$7.86 \pm 0.03$



## Emission Line Measurements

Line	$\log L$ (erg s <sup>-1</sup> )	FWHM (km s <sup>-1</sup> )	$\sigma$ (km s <sup>-1</sup> )	EW (Å)
H $\gamma$ Narrow	$39.23 \pm 0.41$	$304 \pm 63$	$144 \pm 25$	$0.38 \pm 0.32$
<b>H<math>\gamma</math> Broad</b>	—	—	—	—
[O III] 4364	—	—	—	—
He II Narrow	$39.00 \pm 0.45$	$250 \pm 62$	$105 \pm 25$	$0.26 \pm 0.22$
<b>He II Broad</b>	<b><math>40.25 \pm 0.11</math></b>	<b><math>1799 \pm 66</math></b>	<b><math>764 \pm 26</math></b>	<b><math>4.57 \pm 0.64</math></b>
H $\beta$ Narrow	$39.84 \pm 0.10$	$304 \pm 63$	$145 \pm 25$	$1.88 \pm 0.26$
<b>H<math>\beta</math> Broad</b>	<b><math>40.77 \pm 0.05</math></b>	<b><math>4442 \pm 104</math></b>	<b><math>1618 \pm 28</math></b>	<b><math>15.86 \pm 1.03</math></b>
[O III] 5007	$41.11 \pm 0.01$	$304 \pm 63$	$145 \pm 25$	$37.68 \pm 0.33$
He I Narrow	$38.89 \pm 0.35$	$250 \pm 62$	$105 \pm 25$	$0.30 \pm 0.18$
<b>He I Broad</b>	<b><math>40.53 \pm 0.05</math></b>	<b><math>4383 \pm 65</math></b>	<b><math>1861 \pm 26</math></b>	<b><math>13.14 \pm 0.85</math></b>
[O I] 6300	$39.24 \pm 0.18$	$250 \pm 62$	$105 \pm 25$	$0.77 \pm 0.20$
H $\alpha$ Narrow	$40.91 \pm 0.01$	$250 \pm 62$	$105 \pm 25$	$38.55 \pm 0.28$
<b>H<math>\alpha</math> Broad</b>	<b><math>41.56 \pm 0.01</math></b>	<b><math>3297 \pm 76</math></b>	<b><math>1422 \pm 30</math></b>	<b><math>171.80 \pm 1.23</math></b>
[N II] 6585	$40.66 \pm 0.01$	$250 \pm 62$	$105 \pm 25$	$22.14 \pm 0.26$
[S II] 6718	$40.17 \pm 0.03$	$250 \pm 62$	$105 \pm 25$	$7.36 \pm 0.26$
[S II] 6732	$40.09 \pm 0.03$	$250 \pm 62$	$105 \pm 25$	$6.14 \pm 0.24$

## Emission Summary

H $\alpha$ broad SNR	9.29
H $\beta$ broad SNR	1.67
H $\gamma$ broad SNR	0.00
AGN frac	0.43
Host frac	0.57
$\log L_{5100, \text{Host}}$	43.36
Fe II/H $\beta$	2.32
Fe II/[O III]	1.04

## Quality Flags

spurious_hab/hbb	0/0
15100	1
balmer	1
balmer_snr	2
hb_width	0
balmer_width	0