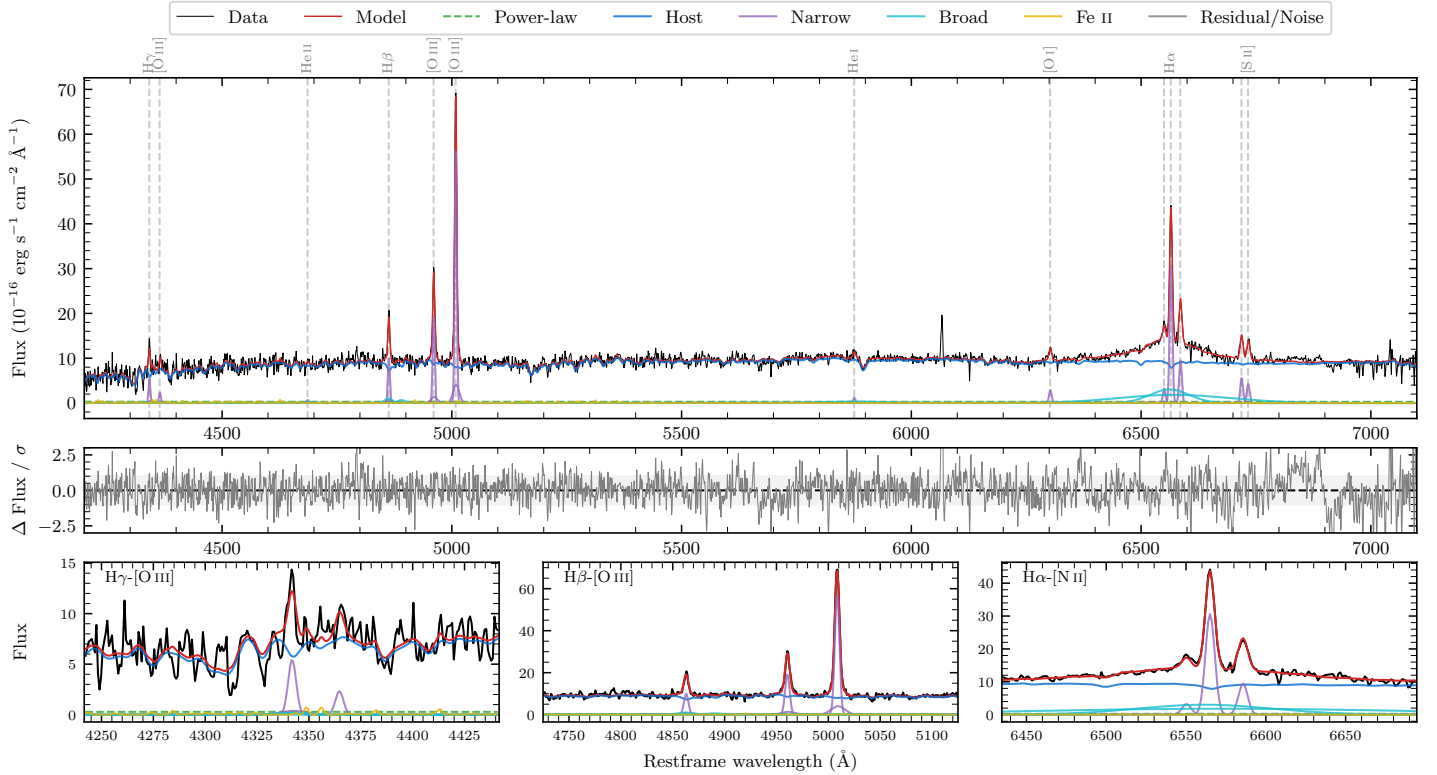
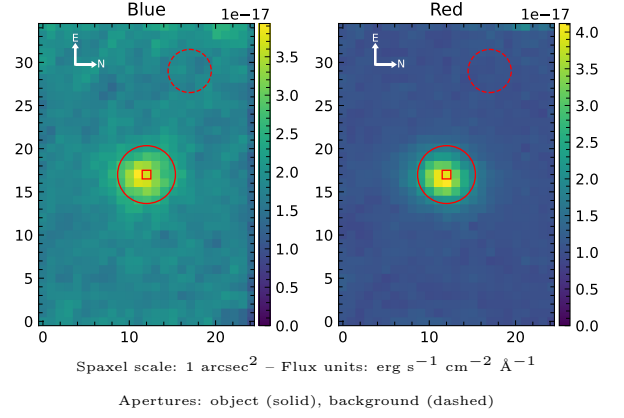


# 6dFGS gJ093606.3–654833

Spectrum ID	457314928_sp1	Spectrum type	Sy 1.8
Alt name	g0936063–654833	Quality flag	good
$z$	0.0392	AGN reference	6dFGS
RA, Dec	144.0260, –65.8093	MW $E(B - V)$	0.204
MJD	61028.71	Power law $\alpha_\nu$	$-1.88 \pm 0.15$
SNR/Å B/R	8.1/16.5	$\log L_{5100, \text{AGN}}$	$41.71 \pm 0.37$
Obs airmass	1.23	$\log H\beta_{\text{Br}}/[O \text{ III}]$	$-1.03 \pm 0.15$
SMSS ID	457314928	$\log M_{L5100}/M_\odot$	–
Neighbour	None $< 15''$	$\log M_{H\alpha}/M_\odot$	$7.78 \pm 0.03$
SMSS $\langle r_6''_{\text{ap}} \rangle$	$16.52 \pm 0.04$	$\log M_{H\beta}/M_\odot$	–
2MASS $K_{\text{ext}}$	$12.44 \pm 0.09$	$\log M_{[O \text{ III}]} / M_\odot$	–



## Emission Line Measurements

Line	$\log L$ (erg s $^{-1}$ )	FWHM (km s $^{-1}$ )	$\sigma$ (km s $^{-1}$ )	EW (Å)
H $\gamma$ Narrow	$40.08 \pm 0.09$	$332 \pm 63$	$209 \pm 27$	$117.13 \pm 18.20$
<b>H<math>\gamma</math> Broad</b>	–	–	–	–
[O III] 4364	$39.62 \pm 0.18$	$315 \pm 62$	$133 \pm 25$	$41.55 \pm 10.44$
He II Narrow	$39.12 \pm 0.38$	$315 \pm 62$	$133 \pm 25$	$13.09 \pm 8.59$
<b>He II Broad</b>	–	–	–	–
H $\beta$ Narrow	$40.39 \pm 0.04$	$332 \pm 63$	$209 \pm 27$	$244.15 \pm 14.54$
<b>H<math>\beta</math> Broad</b>	<b><math>40.12 \pm 0.15</math></b>	–	<b><math>854 \pm 45</math></b>	<b><math>130.94 \pm 18.97</math></b>
[O III] 5007	$41.16 \pm 0.01$	$332 \pm 63$	$209 \pm 27$	$1438.42 \pm 15.68$
He I Narrow	$39.45 \pm 0.14$	$315 \pm 62$	$133 \pm 25$	$28.78 \pm 5.57$
<b>He I Broad</b>	<b><math>40.33 \pm 0.12</math></b>	<b><math>8267 \pm 65</math></b>	<b><math>3511 \pm 26</math></b>	<b><math>216.28 \pm 34.47</math></b>
[O I] 6300	$39.88 \pm 0.06$	$315 \pm 62$	$133 \pm 25$	$78.27 \pm 6.30$
H $\alpha$ Narrow	$40.92 \pm 0.01$	$315 \pm 62$	$133 \pm 25$	$860.64 \pm 7.36$
<b>H<math>\alpha</math> Broad</b>	<b><math>41.51 \pm 0.01</math></b>	<b><math>6128 \pm 187</math></b>	<b><math>3413 \pm 60</math></b>	<b><math>3369.58 \pm 41.73</math></b>
[N II] 6585	$40.41 \pm 0.02$	$315 \pm 62$	$133 \pm 25$	$267.97 \pm 7.49$
[S II] 6718	$40.19 \pm 0.03$	$315 \pm 62$	$133 \pm 25$	$160.25 \pm 6.30$
[S II] 6732	$40.07 \pm 0.03$	$315 \pm 62$	$133 \pm 25$	$123.04 \pm 5.97$

## Emission Summary

H $\alpha$ broad SNR	4.40
H $\beta$ broad SNR	1.04
H $\gamma$ broad SNR	0.44
AGN frac	0.03
Host frac	0.97
$\log L_{5100, \text{Host}}$	43.18
Fe II/H $\beta$	0.89
Fe II/[O III]	0.08

## Quality Flags

spurious_hab/hbb	0/0
15100	2
balmer	1
balmer_snr	2
hb_width	2
balmer_width	2