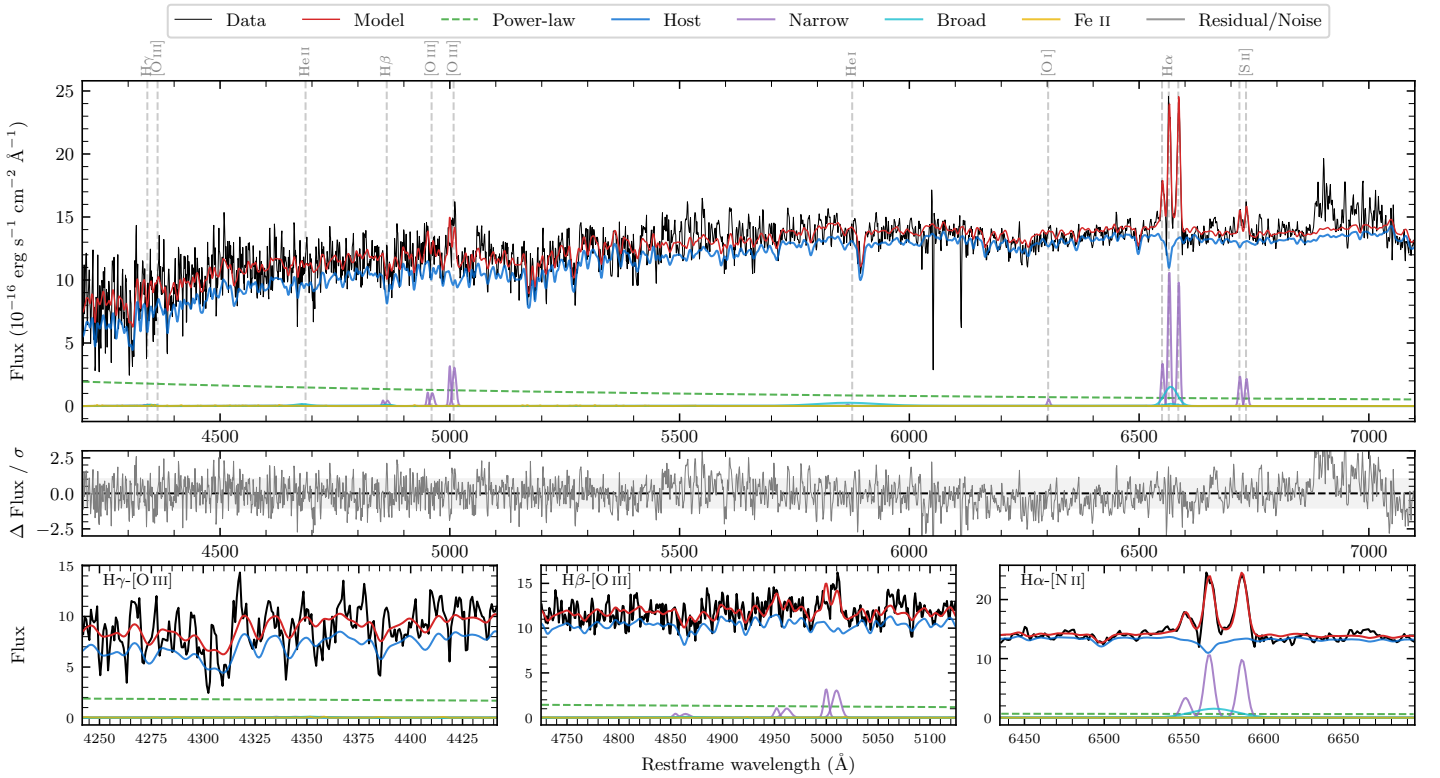
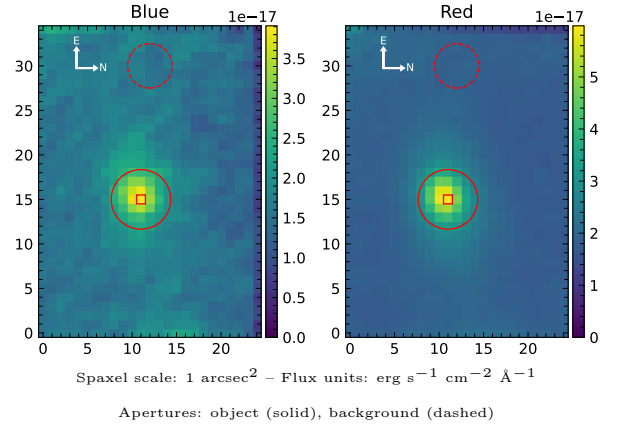


2MASX J11105877–7446281

Spectrum ID	451945476_sp2	Spectrum type	Sy 2
Alt name	g1110588–744628	Quality flag	good
z	0.0419	AGN reference	6dFGS
RA, Dec	167.7451, –74.7746	MW $E(B - V)$	0.253
MJD	61141.47	Power law α_ν	0.49 ± 0.01
SNR/ \AA B/R	9.2/17.4	$\log L_{5100, \text{AGN}}$	42.39 ± 0.07
Obs airmass	1.39	$\log H\beta_{\text{Br}}/[\text{O III}]$	–
SMSS ID	451945476	$\log M_{L5100}/M_\odot$	–
Neighbour	None $< 15''$	$\log M_{H\alpha}/M_\odot$	–
SMSS $\langle r_6'' \text{ap} \rangle$	16.40 ± 0.04	$\log M_{H\beta}/M_\odot$	–
2MASS K_{ext}	11.83 ± 0.11	$\log M_{[\text{O III}]} / M_\odot$	–



Emission Line Measurements

Line	$\log L$ (erg s $^{-1}$)	FWHM (km s $^{-1}$)	σ (km s $^{-1}$)	EW (Å)
H γ Narrow	–	–	–	–
Hγ Broad	–	–	–	–
[O III] 4364	–	–	–	–
He II Narrow	–	–	–	–
He II Broad	–	–	–	–
H β Narrow	39.43 ± 0.39	–	352 ± 25	5.01 ± 2.63
Hβ Broad	–	–	–	–
[O III] 5007	40.30 ± 0.05	–	352 ± 25	39.70 ± 2.94
He I Narrow	–	–	–	–
He I Broad	40.28 ± 0.21	8311 ± 62	3529 ± 25	55.81 ± 14.25
[O I] 6300	39.21 ± 0.29	320 ± 62	135 ± 25	5.67 ± 3.20
H α Narrow	40.65 ± 0.02	320 ± 62	135 ± 25	130.73 ± 4.00
Hα Broad	–	–	–	–
[N II] 6585	40.62 ± 0.02	320 ± 62	135 ± 25	121.01 ± 4.23
[S II] 6718	39.88 ± 0.07	320 ± 62	135 ± 25	31.10 ± 3.37
[S II] 6732	39.84 ± 0.08	320 ± 62	135 ± 25	28.84 ± 3.46

Emission Summary

H α broad SNR	0.00
H β broad SNR	0.00
H γ broad SNR	0.00
AGN frac	0.11
Host frac	0.90
$\log L_{5100, \text{Host}}$	43.32
Fe II/H β	–
Fe II/[O III]	–

Quality Flags

spurious_hab/hbb	1/0
15100	2
balmer	2
balmer_snr	2
hb_width	2
balmer_width	2