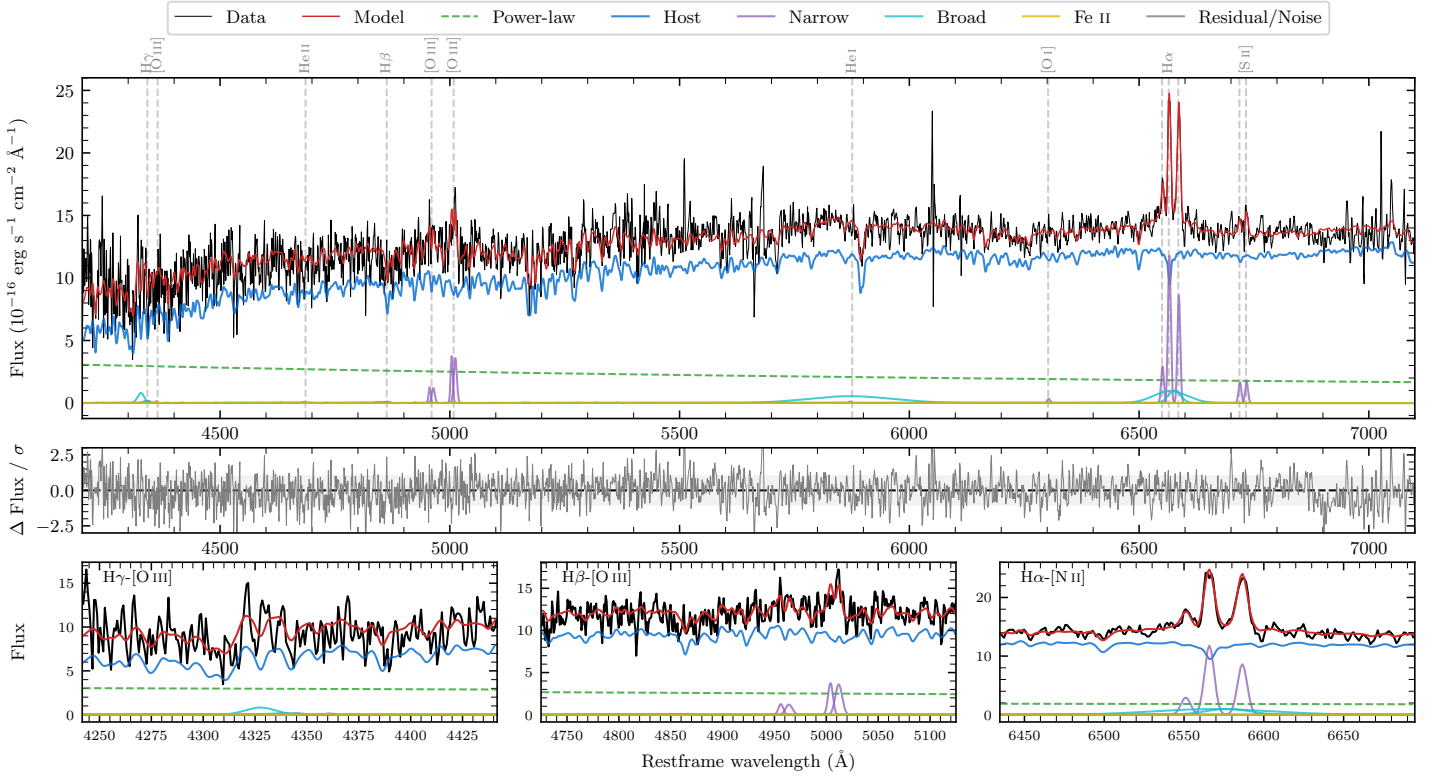
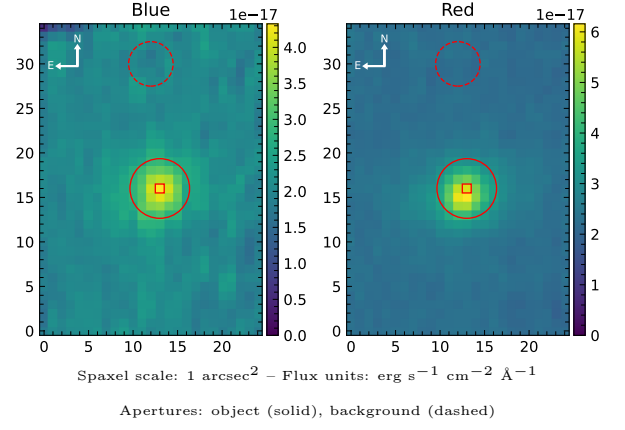


2MASX J11105877–7446281

Spectrum ID	451945476_sp1	Spectrum type	Bad
Alt name	g1110588–744628	Quality flag	bad_all
z	0.0419	AGN reference	6dFGS
RA, Dec	167.7451, –74.7746	MW $E(B - V)$	0.253
MJD	60078.37	Power law α_ν	-0.84 ± 0.10
SNR/ \AA B/R	9.4/16.9	$\log L_{5100, \text{AGN}}$	42.70 ± 0.05
Obs airmass	1.39	$\log H\beta_{\text{Br}}/[\text{O III}]$	–
SMSS ID	451945476	$\log M_{L5100}/M_\odot$	–
Neighbour	None $< 15''$	$\log M_{\text{H}\alpha}/M_\odot$	6.41 ± 0.18
SMSS $\langle r_6''_{\text{ap}} \rangle$	16.40 ± 0.04	$\log M_{\text{H}\beta}/M_\odot$	–
2MASS K_{ext}	11.83 ± 0.11	$\log M_{[\text{O III}]} / M_\odot$	–



Emission Line Measurements

Line	$\log L$ (erg s $^{-1}$)	FWHM (km s $^{-1}$)	σ (km s $^{-1}$)	EW (Angstroms)
H γ Narrow	–	–	–	–
Hγ Broad	–	–	–	–
[O III] 4364	–	–	–	–
He II Narrow	–	–	–	–
He II Broad	–	–	–	–
H β Narrow	–	–	–	–
Hβ Broad	–	–	–	–
[O III] 5007	40.33 ± 0.05	849 ± 63	292 ± 25	21.40 ± 1.37
He I Narrow	–	–	–	–
He I Broad	40.72 ± 0.09	11004 ± 62	4673 ± 25	63.13 ± 7.42
[O I] 6300	39.04 ± 0.44	326 ± 62	138 ± 25	1.41 ± 1.17
H α Narrow	40.58 ± 0.02	326 ± 62	138 ± 25	51.07 ± 1.47
Hα Broad	40.71 ± 0.06	2221 ± 402	1172 ± 76	69.17 ± 4.39
[N II] 6585	40.44 ± 0.02	326 ± 62	138 ± 25	37.58 ± 1.53
[S II] 6718	39.73 ± 0.10	326 ± 62	138 ± 25	7.58 ± 1.18
[S II] 6732	39.75 ± 0.11	326 ± 62	138 ± 25	7.91 ± 1.23

Emission Summary

H α broad SNR	1.51
H β broad SNR	0.00
H γ broad SNR	0.00
AGN frac	0.21
Host frac	0.79
$\log L_{5100, \text{Host}}$	43.28
Fe II/H β	–
Fe II/[O III]	–

Quality Flags

spurious_hab/hbb	0/0
15100	1
balmer	2
balmer_snr	2
hb_width	2
balmer_width	2