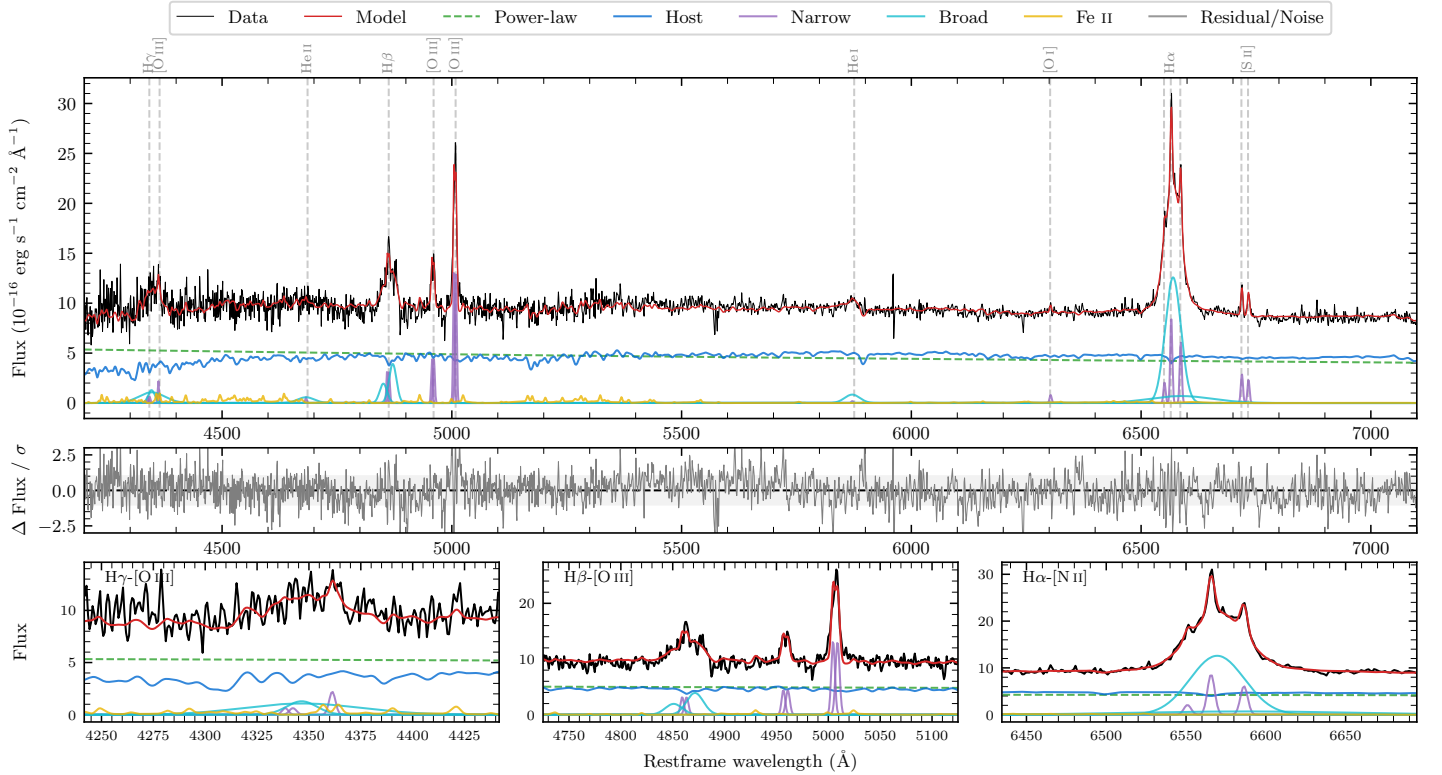
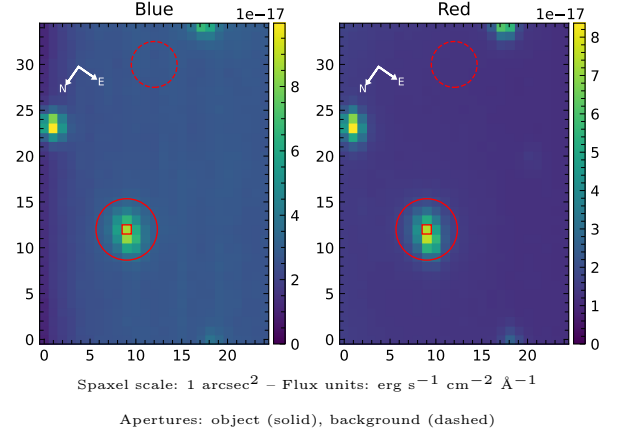


# 6dFGS gJ101134.8–452830

Spectrum ID	413499695_sp1	Spectrum type	Sy 1.5
Alt name	g1011348–452830	Quality flag	good
$z$	0.0575	AGN reference	6dFGS
RA, Dec	152.8950, –45.4749	MW $E(B - V)$	0.153
MJD	59352.39	Power law $\alpha_\nu$	$-1.46 \pm 0.04$
SNR/ $\text{\AA}$ B/R	11.5/22.5	$\log L_{5100, \text{AGN}}$	$43.29 \pm 0.02$
Obs airmass	1.05	$\log H\beta_{\text{Br}}/[\text{O III}]$	$-0.01 \pm 0.03$
SMSS ID	413499695	$\log M_{L5100}/M_\odot$	$7.17 \pm 0.12$
Neighbour	13.9", 413499694	$\log M_{\text{H}\alpha}/M_\odot$	$6.90 \pm 0.03$
SMSS $\langle r_{6''}^{\text{ap}} \rangle$	$16.67 \pm 0.03$	$\log M_{\text{H}\beta}/M_\odot$	$6.95 \pm 0.12$
2MASS $K_{\text{ext}}$	nan $\pm$ nan	$\log M_{[\text{O III}]} / M_\odot$	$7.09 \pm 0.12$



## Emission Line Measurements

Line	$\log L$ ( $\text{erg s}^{-1}$ )	FWHM ( $\text{km s}^{-1}$ )	$\sigma$ ( $\text{km s}^{-1}$ )	EW ( $\text{\AA}$ )
H $\gamma$ Narrow	$39.63 \pm 0.34$	$501 \pm 63$	$171 \pm 25$	$1.02 \pm 0.44$
<b>H<math>\gamma</math> Broad</b>	<b><math>40.92 \pm 0.07</math></b>	<b><math>1884 \pm 452</math></b>	<b><math>1330 \pm 106</math></b>	<b><math>19.93 \pm 1.69</math></b>
[O III] 4364	$39.84 \pm 0.16$	$248 \pm 63$	$104 \pm 25$	$1.69 \pm 0.38$
He II Narrow	$39.30 \pm 0.38$	$248 \pm 63$	$104 \pm 25$	$0.50 \pm 0.33$
<b>He II Broad</b>	<b><math>40.35 \pm 0.15</math></b>	<b><math>2748 \pm 87</math></b>	<b><math>1167 \pm 36</math></b>	<b><math>5.53 \pm 1.15</math></b>
H $\beta$ Narrow	$40.37 \pm 0.06$	$501 \pm 63$	$171 \pm 25$	$6.04 \pm 0.39$
<b>H<math>\beta</math> Broad</b>	<b><math>41.00 \pm 0.03</math></b>	<b><math>1932 \pm 262</math></b>	<b><math>737 \pm 31</math></b>	<b><math>25.47 \pm 0.85</math></b>
[O III] 5007	$41.01 \pm 0.01$	$501 \pm 63$	$171 \pm 25$	$26.46 \pm 0.40$
He I Narrow	$38.92 \pm 0.41$	$248 \pm 63$	$104 \pm 25$	$0.23 \pm 0.20$
<b>He I Broad</b>	<b><math>40.47 \pm 0.05</math></b>	<b><math>1981 \pm 95</math></b>	<b><math>841 \pm 39</math></b>	<b><math>8.25 \pm 0.61</math></b>
[O I] 6300	$39.57 \pm 0.12$	$248 \pm 63$	$104 \pm 25$	$1.08 \pm 0.20$
H $\alpha$ Narrow	$40.61 \pm 0.02$	$248 \pm 63$	$104 \pm 25$	$12.36 \pm 0.28$
<b>H<math>\alpha</math> Broad</b>	<b><math>41.74 \pm 0.01</math></b>	<b><math>1902 \pm 65</math></b>	<b><math>850 \pm 37</math></b>	<b><math>165.32 \pm 1.29</math></b>
[N II] 6585	$40.46 \pm 0.02$	$248 \pm 63$	$104 \pm 25$	$8.80 \pm 0.25$
[S II] 6718	$40.15 \pm 0.04$	$248 \pm 63$	$104 \pm 25$	$4.30 \pm 0.22$
[S II] 6732	$40.05 \pm 0.04$	$248 \pm 63$	$104 \pm 25$	$3.41 \pm 0.23$

## Emission Summary

H $\alpha$ broad SNR	16.85
H $\beta$ broad SNR	5.09
H $\gamma$ broad SNR	3.01
AGN frac	0.52
Host frac	0.48
$\log L_{5100, \text{Host}}$	43.25
Fe II/H $\beta$	0.77
Fe II/[O III]	0.75

## Quality Flags

spurious_hab/hbb	0/0
15100	0
balmer	0
balmer_snr	0
hb_width	0
balmer_width	0