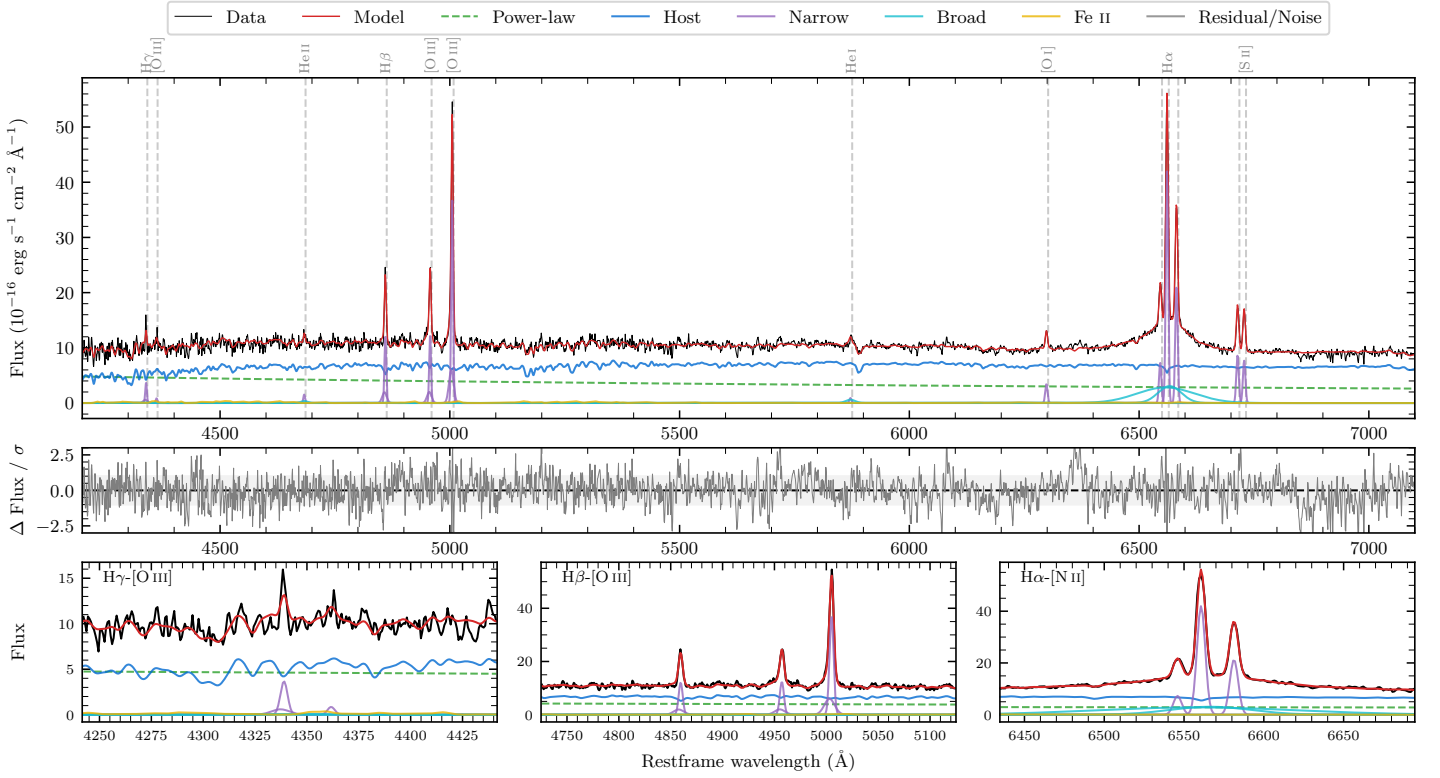
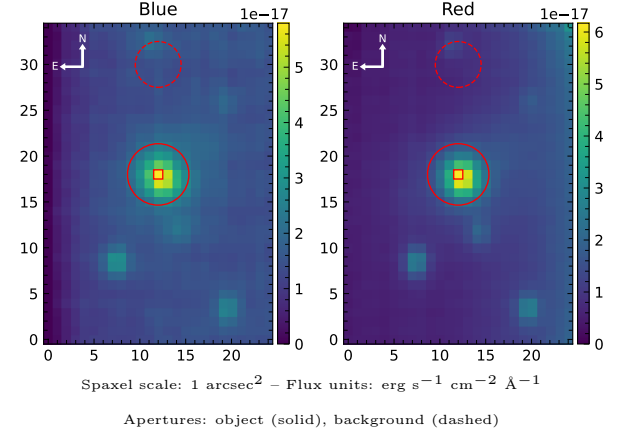


LEDA 3085413

Spectrum ID	412799397_sp1	Spectrum type	Sy 1.8+
Alt name	g1046120-471741	Quality flag	good
z	0.0462	AGN reference	6dFGS
RA, Dec	161.5498, -47.2948	MW $E(B - V)$	0.142
MJD	60376.58	Power law α_ν	-0.84 ± 0.08
SNR/ \AA B/R	15.4/22.0	$\log L_{5100, \text{AGN}}$	43.00 ± 0.02
Obs airmass	1.04	$\log H\beta_{\text{Br}}/[\text{O III}]$	< -0.76
SMSS ID	412799397	$\log M_{L5100}/M_\odot$	—
Neighbour	10.3", 412799420	$\log M_{\text{H}\alpha}/M_\odot$	7.41 ± 0.03
SMSS $\langle r_6''_{\text{ap}} \rangle$	16.30 ± 0.05	$\log M_{\text{H}\beta}/M_\odot$	—
2MASS K_{ext}	12.33 ± 0.11	$\log M_{[\text{O III}]} / M_\odot$	—



Emission Line Measurements

Line	$\log L$ (erg s ⁻¹)	FWHM (km s ⁻¹)	σ (km s ⁻¹)	EW (Å)
H γ Narrow	40.08 ± 0.08	311 ± 63	196 ± 26	5.07 ± 0.61
Hγ Broad	—	—	—	—
[O III] 4364	39.31 ± 0.28	288 ± 62	120 ± 25	0.85 ± 0.36
He II Narrow	39.59 ± 0.17	288 ± 62	120 ± 25	1.78 ± 0.34
He II Broad	39.59 ± 0.33	1178 ± 62	500 ± 25	1.76 ± 0.68
H β Narrow	40.65 ± 0.02	311 ± 63	196 ± 26	21.31 ± 0.59
Hβ Broad	< 40.39	—	—	—
[O III] 5007	41.15 ± 0.01	311 ± 63	196 ± 26	69.36 ± 0.62
He I Narrow	39.46 ± 0.20	288 ± 62	120 ± 25	1.73 ± 0.35
He I Broad	39.93 ± 0.14	1225 ± 64	520 ± 26	5.03 ± 0.73
[O I] 6300	40.07 ± 0.03	288 ± 62	120 ± 25	7.58 ± 0.38
H α Narrow	41.17 ± 0.01	288 ± 62	120 ± 25	100.84 ± 0.57
Hα Broad	41.54 ± 0.01	3938 ± 128	1960 ± 32	233.17 ± 2.03
[N II] 6585	40.88 ± 0.01	288 ± 62	120 ± 25	51.49 ± 0.51
[S II] 6718	40.50 ± 0.01	288 ± 62	120 ± 25	21.91 ± 0.42
[S II] 6732	40.45 ± 0.02	288 ± 62	120 ± 25	19.49 ± 0.43

Emission Summary

H α broad SNR	8.32
H β broad SNR	0.00
H γ broad SNR	0.00
AGN frac	0.37
Host frac	0.63
$\log L_{5100, \text{Host}}$	43.24
Fe II/H β	—
Fe II/[O III]	0.23

Quality Flags

spurious_hab/hbb	0/0
15100	1
balmer	2
balmer_snr	2
hb_width	2
balmer_width	2