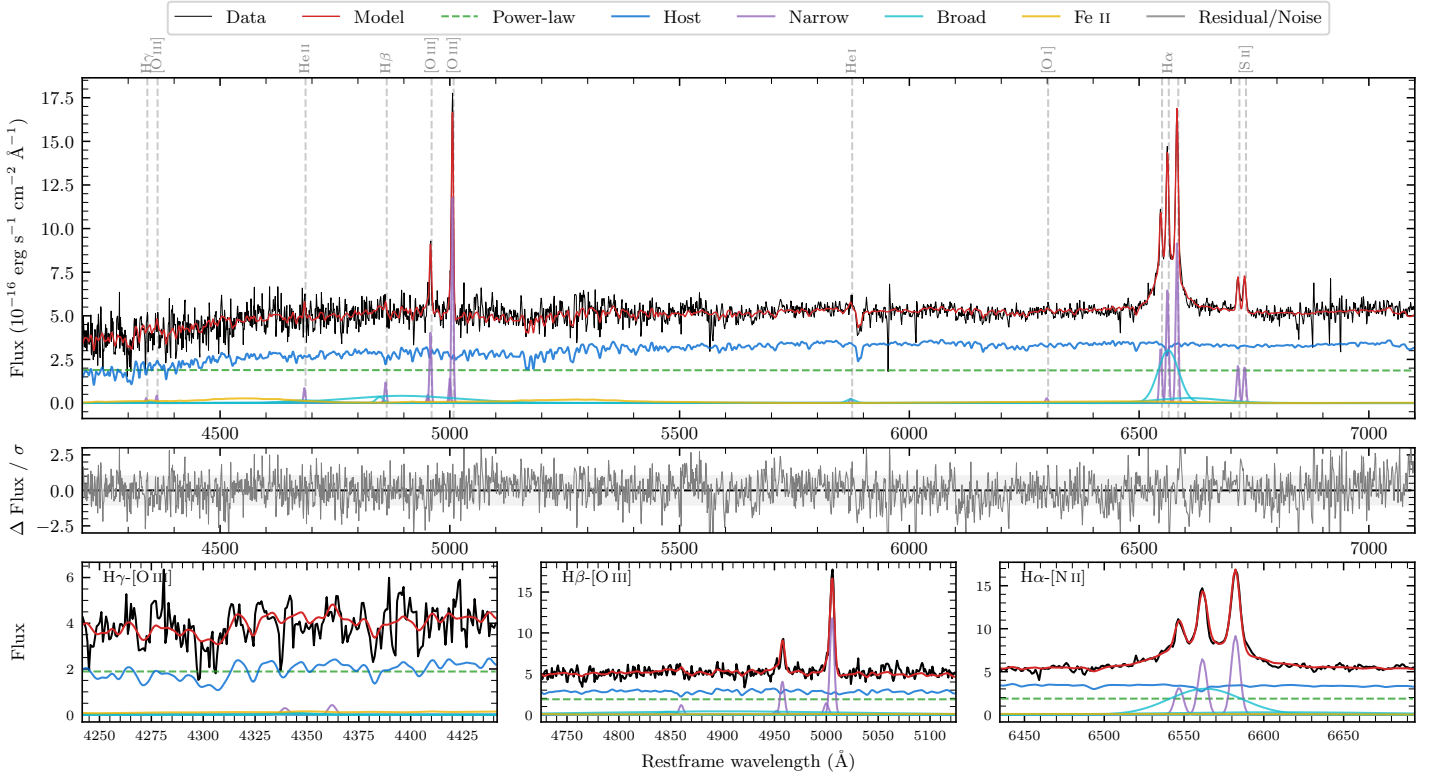
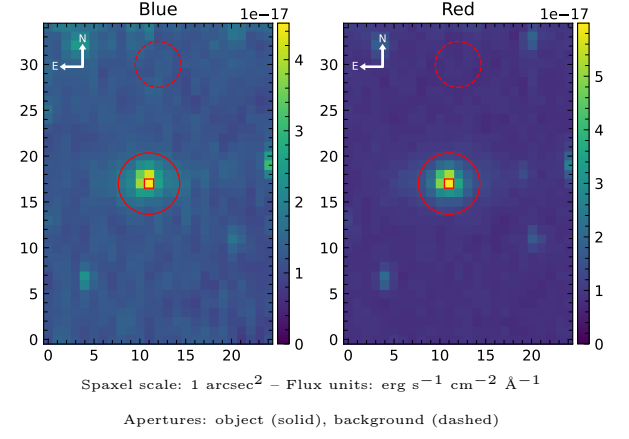


6dFGS gJ105707.2–463120

Spectrum ID	412652383_sp1	Spectrum type	Sy 1.8+
Alt name	g1057072–463120	Quality flag	good
z	0.0577	AGN reference	6dFGS
RA, Dec	164.2800, –46.5223	MW $E(B - V)$	0.114
MJD	61090.61	Power law α_ν	-1.97 ± 0.03
SNR/ \AA B/R	9.2/19.4	$\log L_{5100, \text{AGN}}$	42.89 ± 0.05
Obs airmass	1.04	$\log H\beta_{\text{Br}}/[\text{O III}]$	< -0.48
SMSS ID	412652383	$\log M_{L5100}/M_\odot$	–
Neighbour	11.2", 1504508993	$\log M_{\text{H}\alpha}/M_\odot$	6.88 ± 0.04
SMSS $\langle r_{6''}^{\text{ap}} \rangle$	16.99 ± 0.04	$\log M_{\text{H}\beta}/M_\odot$	–
2MASS K_{ext}	12.73 ± 0.11	$\log M_{[\text{O III}]} / M_\odot$	–



Emission Line Measurements

Line	$\log L$ (erg s $^{-1}$)	FWHM (km s $^{-1}$)	σ (km s $^{-1}$)	EW (Å)
H γ Narrow	–	–	–	–
Hγ Broad	–	–	–	–
[O III] 4364	39.22 ± 0.37	293 ± 62	124 ± 25	1.08 ± 0.73
He II Narrow	39.56 ± 0.19	293 ± 62	124 ± 25	2.37 ± 0.74
He II Broad	–	–	–	–
H β Narrow	39.76 ± 0.13	308 ± 63	162 ± 26	3.77 ± 0.70
Hβ Broad	< 40.29	–	–	–
[O III] 5007	40.78 ± 0.01	308 ± 63	162 ± 26	39.25 ± 0.73
He I Narrow	39.12 ± 0.33	293 ± 62	124 ± 25	0.87 ± 0.36
He I Broad	39.65 ± 0.21	1178 ± 62	500 ± 25	2.96 ± 0.74
[O I] 6300	39.20 ± 0.24	293 ± 62	124 ± 25	1.04 ± 0.34
H α Narrow	40.58 ± 0.02	293 ± 62	124 ± 25	25.01 ± 0.49
Hα Broad	41.28 ± 0.02	2558 ± 67	1193 ± 61	126.18 ± 2.17
[N II] 6585	40.73 ± 0.01	293 ± 62	124 ± 25	35.45 ± 0.47
[S II] 6718	40.11 ± 0.03	293 ± 62	124 ± 25	8.48 ± 0.38
[S II] 6732	40.10 ± 0.03	293 ± 62	124 ± 25	8.22 ± 0.37

Emission Summary

H α broad SNR	6.19
H β broad SNR	0.66
H γ broad SNR	0.00
AGN frac	0.41
Host frac	0.59
$\log L_{5100, \text{Host}}$	43.06
Fe II/H β	–
Fe II/[O III]	–

Quality Flags

spurious_hab/hbb	0/2
15100	1
balmer	2
balmer_snr	2
hb_width	2
balmer_width	2