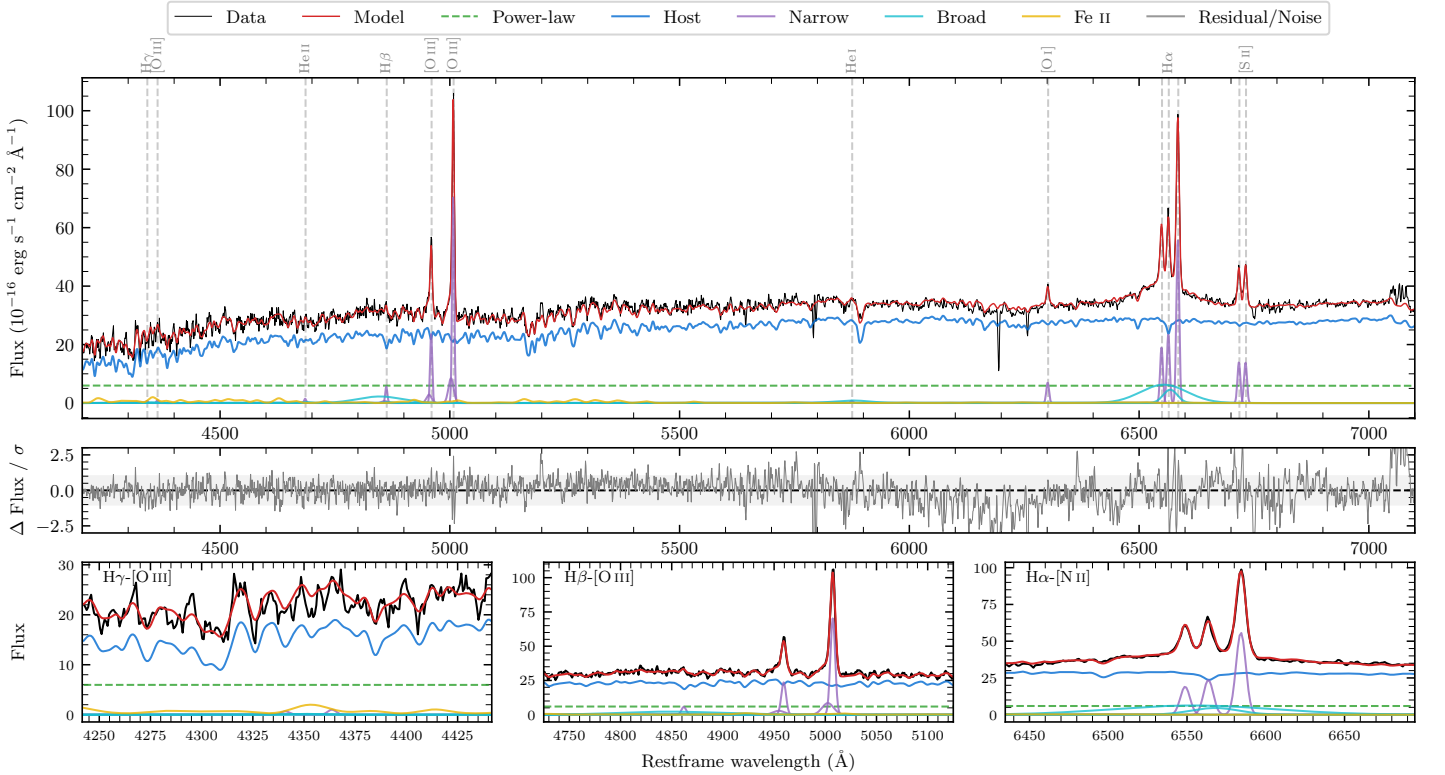
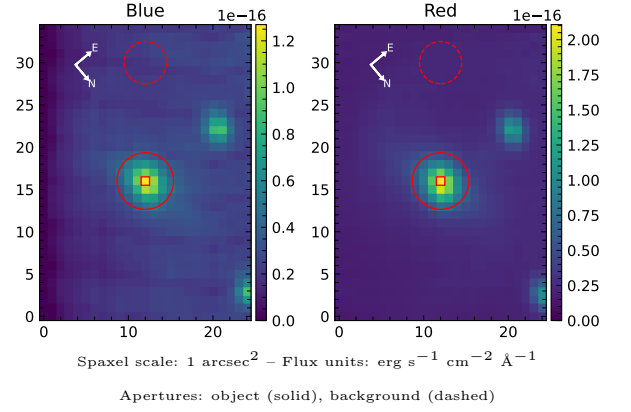


# ESO 216–24

Spectrum ID	410558006_sp1	Spectrum type	Sy 1.5
Alt name	g1137445–491037	Quality flag	good
$z$	0.0170	AGN reference	6dFGS
RA, Dec	174.4355, –49.1771	MW $E(B - V)$	0.169
MJD	60457.4	Power law $\alpha_\nu$	$-1.98 \pm 0.02$
SNR/ $\text{\AA}$ B/R	13.2/33.3	$\log L_{5100, \text{AGN}}$	$42.30 \pm 0.03$
Obs airmass	1.05	$\log H\beta_{\text{Br}}/[\text{O III}]$	$-0.27 \pm 0.07$
SMSS ID	410558006	$\log M_{L5100}/M_\odot$	$7.79 \pm 0.09$
Neighbour	10.6", 410558003	$\log M_{H\alpha}/M_\odot$	$6.82 \pm 0.08$
SMSS $\langle r_6 \rangle_{\text{ap}}$	$15.08 \pm 0.12$	$\log M_{H\beta}/M_\odot$	$7.68 \pm 0.11$
2MASS $K_{\text{ext}}$	$9.56 \pm 0.04$	$\log M_{[\text{O III}]} / M_\odot$	$7.91 \pm 0.09$



## Emission Line Measurements

Line	$\log L$ (erg s <sup>-1</sup> )	FWHM (km s <sup>-1</sup> )	$\sigma$ (km s <sup>-1</sup> )	EW (Å)
H $\gamma$ Narrow	–	–	–	–
<b>H<math>\gamma</math> Broad</b>	–	–	–	–
[O III] 4364	–	–	–	–
He II Narrow	$38.75 \pm 0.37$	$333 \pm 62$	$141 \pm 25$	$1.42 \pm 0.82$
<b>He II Broad</b>	–	–	–	–
H $\beta$ Narrow	$39.45 \pm 0.11$	$353 \pm 63$	$234 \pm 26$	$7.14 \pm 1.21$
<b>H<math>\beta</math> Broad</b>	<b><math>40.28 \pm 0.07</math></b>	<b><math>6455 \pm 592</math></b>	<b><math>2536 \pm 39</math></b>	<b><math>47.95 \pm 3.77</math></b>
[O III] 5007	$40.56 \pm 0.01$	$353 \pm 63$	$234 \pm 26$	$91.24 \pm 1.24$
He I Narrow	$38.56 \pm 0.34$	$333 \pm 62$	$141 \pm 25$	$0.93 \pm 0.44$
<b>He I Broad</b>	<b><math>39.76 \pm 0.10</math></b>	<b><math>4692 \pm 63</math></b>	<b><math>1993 \pm 25</math></b>	<b><math>14.70 \pm 1.87</math></b>
[O I] 6300	$39.54 \pm 0.04$	$333 \pm 62$	$141 \pm 25$	$8.92 \pm 0.48$
H $\alpha$ Narrow	$40.09 \pm 0.02$	$333 \pm 62$	$141 \pm 25$	$31.45 \pm 0.49$
<b>H<math>\alpha</math> Broad</b>	<b><math>40.82 \pm 0.01</math></b>	<b><math>3300 \pm 237</math></b>	<b><math>1741 \pm 27</math></b>	<b><math>167.14 \pm 1.92</math></b>
[N II] 6585	$40.47 \pm 0.01$	$333 \pm 62$	$141 \pm 25$	$74.41 \pm 0.49$
[S II] 6718	$39.87 \pm 0.02$	$333 \pm 62$	$141 \pm 25$	$18.95 \pm 0.48$
[S II] 6732	$39.87 \pm 0.02$	$333 \pm 62$	$141 \pm 25$	$18.88 \pm 0.49$

## Emission Summary

H $\alpha$ broad SNR	4.82
H $\beta$ broad SNR	1.20
H $\gamma$ broad SNR	0.00
AGN frac	0.21
Host frac	0.79
$\log L_{5100, \text{Host}}$	42.87
Fe II/H $\beta$	0.92
Fe II/[O III]	0.48

## Quality Flags

spurious_hab/hbb	0/0
15100	1
balmer	1
balmer_snr	2
hb_width	0
balmer_width	1