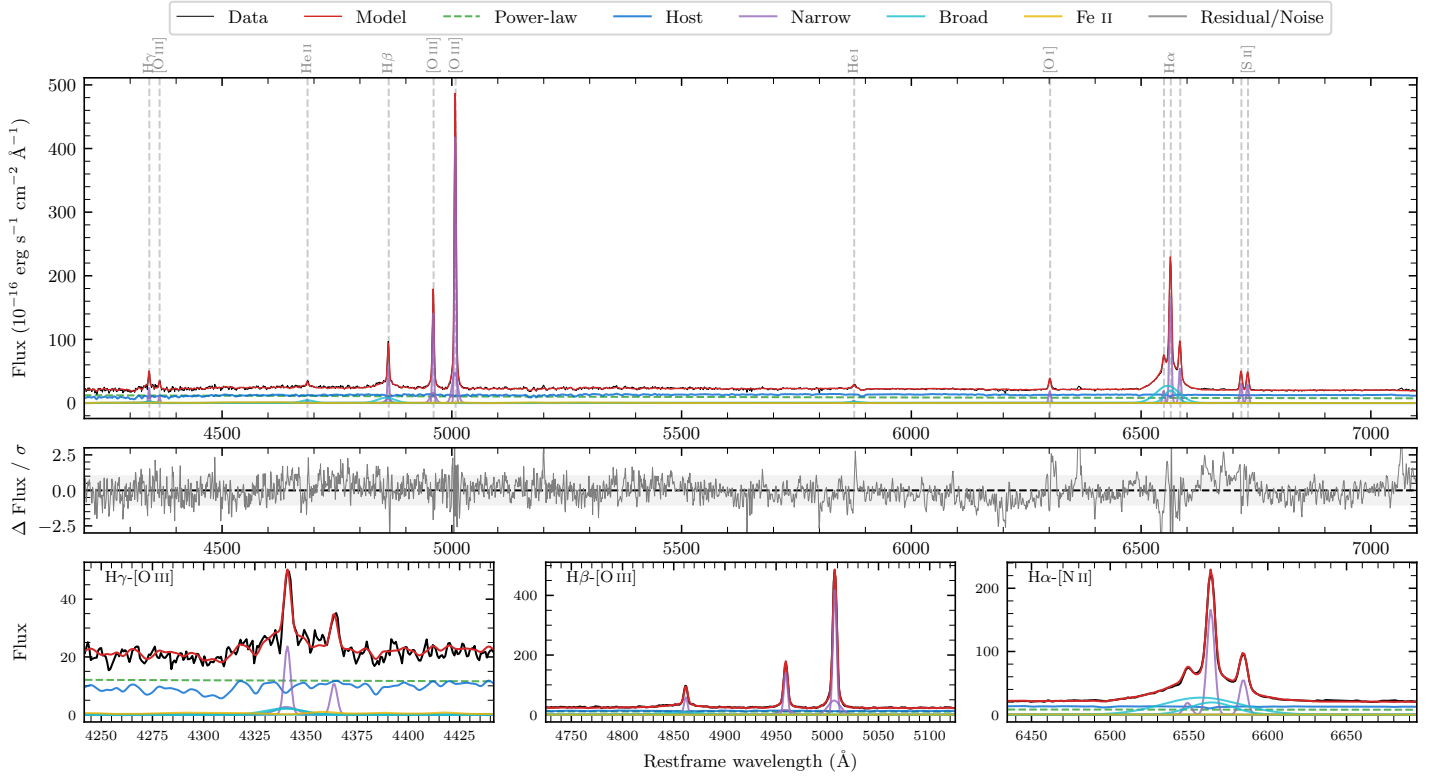
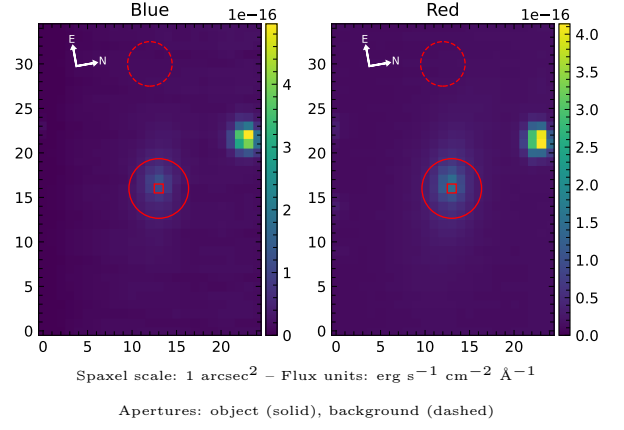


ESO 264–52

Spectrum ID	410366359_sp1	Spectrum type	Sy 1.8
Alt name	g1057139–474011	Quality flag	good
z	0.0154	AGN reference	6dFGS
RA, Dec	164.3079, –47.6698	MW $E(B - V)$	0.165
MJD	60413.43	Power law α_ν	-1.06 ± 0.11
SNR/ \AA B/R	13.5/19.1	$\log L_{5100, \text{AGN}}$	42.45 ± 0.02
Obs airmass	1.07	$\log H\beta_{\text{Br}}/[\text{O III}]$	-0.78 ± 0.07
SMSS ID	410366359	$\log M_{L5100}/M_\odot$	7.13 ± 0.23
Neighbour	11.2", 410366146	$\log M_{H\alpha}/M_\odot$	6.57 ± 0.06
SMSS $\langle r_6^{\text{ap}} \rangle$	15.55 ± 0.06	$\log M_{H\beta}/M_\odot$	6.99 ± 0.24
2MASS K_{ext}	11.29 ± 0.07	$\log M_{[\text{O III}]} / M_\odot$	7.48 ± 0.23



Emission Line Measurements

Line	$\log L$ (erg s^{-1})	FWHM (km s^{-1})	σ (km s^{-1})	EW (\AA)
H γ Narrow	39.86 ± 0.05	279 ± 62	209 ± 28	11.11 ± 0.70
Hγ Broad	39.77 ± 0.13	1409 ± 205	513 ± 81	7.97 ± 0.90
[O III] 4364	39.38 ± 0.07	264 ± 63	110 ± 25	3.75 ± 0.37
He II Narrow	39.14 ± 0.12	264 ± 63	110 ± 25	2.32 ± 0.31
He II Broad	39.95 ± 0.11	2038 ± 348	866 ± 148	13.78 ± 0.88
H β Narrow	40.31 ± 0.02	279 ± 62	209 ± 28	34.77 ± 0.61
Hβ Broad	40.39 ± 0.07	2781 ± 650	991 ± 206	40.79 ± 1.07
[O III] 5007	41.17 ± 0.01	279 ± 62	210 ± 28	259.90 ± 0.74
He I Narrow	39.07 ± 0.12	264 ± 63	110 ± 25	2.40 ± 0.29
He I Broad	39.56 ± 0.09	1488 ± 206	632 ± 87	7.79 ± 0.71
[O I] 6300	39.77 ± 0.02	264 ± 63	110 ± 25	12.84 ± 0.31
H α Narrow	40.74 ± 0.01	264 ± 63	110 ± 25	127.07 ± 0.48
Hα Broad	41.10 ± 0.01	2029 ± 119	841 ± 62	298.63 ± 1.14
[N II] 6585	40.27 ± 0.02	264 ± 63	110 ± 25	42.64 ± 0.38
[S II] 6718	40.02 ± 0.01	264 ± 63	110 ± 25	24.68 ± 0.36
[S II] 6732	39.99 ± 0.01	264 ± 63	110 ± 25	23.04 ± 0.38

Emission Summary

H α broad SNR	24.78
H β broad SNR	5.03
H γ broad SNR	2.38
AGN frac	0.46
Host frac	0.54
$\log L_{5100, \text{Host}}$	42.52
Fe II/H β	0.55
Fe II/[O III]	0.09

Quality Flags

spurious_hab/hbb	0/0
15100	1
balmer	0
balmer_snr	1
hb_width	0
balmer_width	0