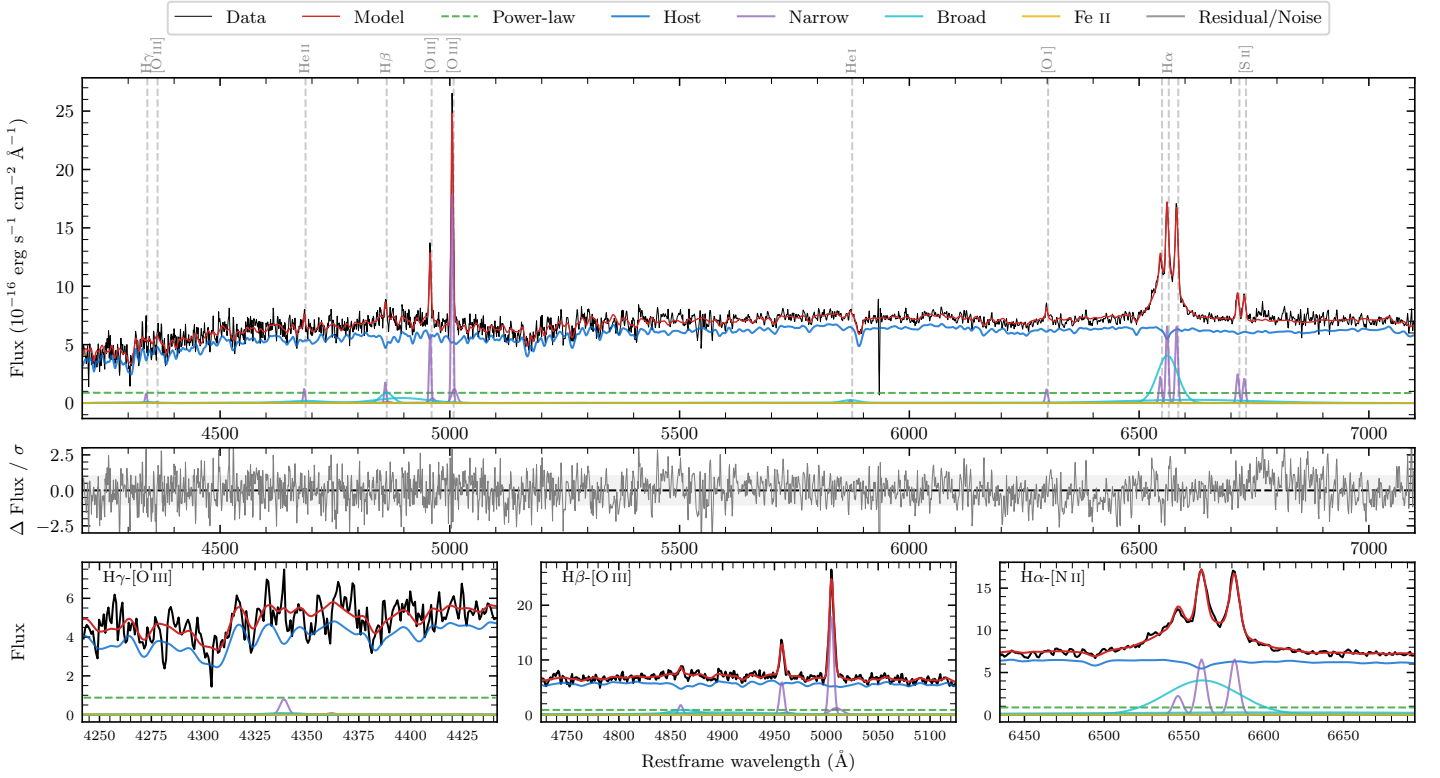
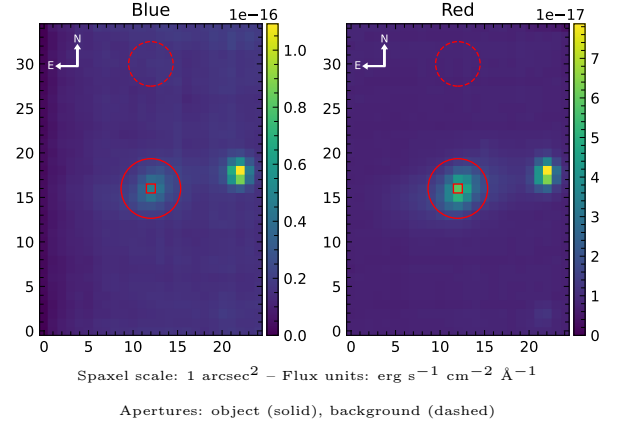


# 6dFGS gJ111945.5–460732

Spectrum ID	409924618_sp1	Spectrum type	Sy 1.5
Alt name	g1119455–460732	Quality flag	good
$z$	0.0621	AGN reference	6dFGS
RA, Dec	169.9396, –46.1254	MW $E(B - V)$	0.123
MJD	60048.48	Power law $\alpha_\nu$	$-1.95 \pm 0.06$
SNR/ $\text{\AA}$ B/R	12.5/20.9	$\log L_{5100, \text{AGN}}$	$42.61 \pm 0.12$
Obs airmass	1.04	$\log H\beta_{\text{Br}}/[\text{O III}]$	$-0.11 \pm 0.05$
SMSS ID	409924618	$\log M_{L5100}/M_\odot$	$7.14 \pm 0.12$
Neighbour	9.8", 409924971	$\log M_{\text{H}\alpha}/M_\odot$	$7.02 \pm 0.03$
SMSS $\langle r_6^{\text{ap}} \rangle$	$16.86 \pm 0.02$	$\log M_{\text{H}\beta}/M_\odot$	$7.19 \pm 0.11$
2MASS $K_{\text{ext}}$	$12.55 \pm 0.11$	$\log M_{[\text{O III}]} / M_\odot$	$7.37 \pm 0.10$



## Emission Line Measurements

Line	$\log L$ (erg s <sup>-1</sup> )	FWHM (km s <sup>-1</sup> )	$\sigma$ (km s <sup>-1</sup> )	EW (Å)
H $\gamma$ Narrow	$39.64 \pm 0.24$	$321 \pm 63$	$208 \pm 27$	$5.45 \pm 2.19$
<b>H<math>\gamma</math> Broad</b>	—	—	—	—
[O III] 4364	—	—	—	—
He II Narrow	$39.79 \pm 0.13$	$310 \pm 63$	$131 \pm 25$	$7.60 \pm 1.29$
<b>He II Broad</b>	<b><math>40.33 \pm 0.19</math></b>	<b><math>7050 \pm 64</math></b>	<b><math>2994 \pm 26</math></b>	<b><math>26.62 \pm 6.39</math></b>
H $\beta$ Narrow	$40.04 \pm 0.10$	$321 \pm 63$	$208 \pm 28$	$13.58 \pm 2.17$
<b>H<math>\beta</math> Broad</b>	<b><math>40.94 \pm 0.05</math></b>	<b><math>2619 \pm 296</math></b>	<b><math>2183 \pm 103</math></b>	<b><math>109.61 \pm 6.69</math></b>
[O III] 5007	$41.05 \pm 0.01$	$321 \pm 63$	$208 \pm 28$	$141.20 \pm 2.23$
He I Narrow	$39.20 \pm 0.37$	$310 \pm 63$	$131 \pm 25$	$1.98 \pm 1.05$
<b>He I Broad</b>	<b><math>40.07 \pm 0.15</math></b>	<b><math>2264 \pm 64</math></b>	<b><math>961 \pm 26</math></b>	<b><math>14.76 \pm 2.98</math></b>
[O I] 6300	$39.90 \pm 0.08$	$310 \pm 63$	$131 \pm 25$	$10.00 \pm 1.07$
H $\alpha$ Narrow	$40.66 \pm 0.02$	$310 \pm 63$	$131 \pm 25$	$58.27 \pm 1.21$
<b>H<math>\alpha</math> Broad</b>	<b><math>41.51 \pm 0.02</math></b>	<b><math>2550 \pm 68</math></b>	<b><math>1659 \pm 95</math></b>	<b><math>408.42 \pm 7.52</math></b>
[N II] 6585	$40.67 \pm 0.02$	$310 \pm 63$	$131 \pm 25$	$58.60 \pm 1.19$
[S II] 6718	$40.25 \pm 0.03$	$310 \pm 63$	$131 \pm 25$	$22.67 \pm 1.07$
[S II] 6732	$40.18 \pm 0.04$	$310 \pm 63$	$131 \pm 25$	$19.16 \pm 1.09$

## Emission Summary

H $\alpha$ broad SNR	8.34
H $\beta$ broad SNR	2.38
H $\gamma$ broad SNR	0.00
AGN frac	0.14
Host frac	0.86
$\log L_{5100, \text{Host}}$	43.40
Fe II/H $\beta$	—
Fe II/[O III]	—

## Quality Flags

spurious_hab/hbb	0/0
15100	2
balmer	1
balmer_snr	2
hb_width	2
balmer_width	0