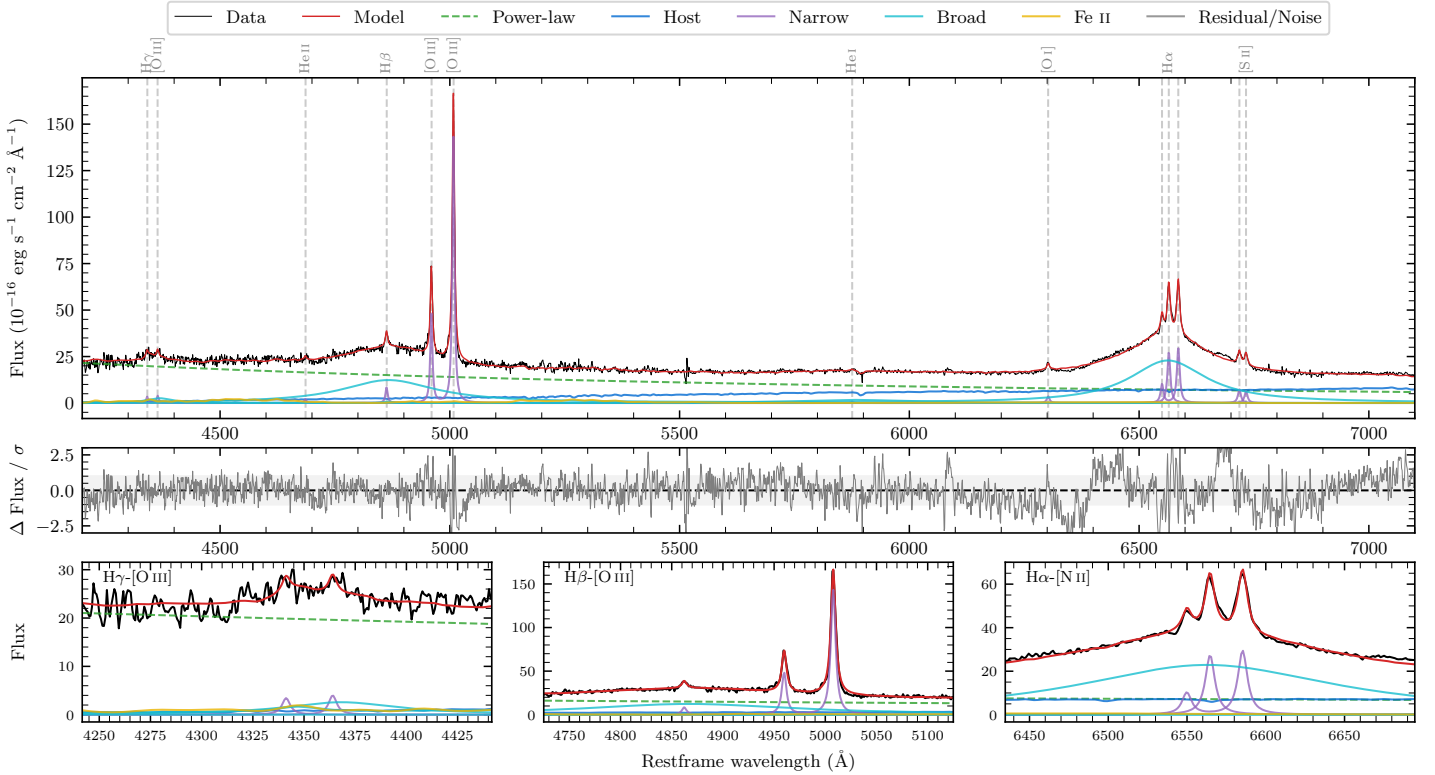
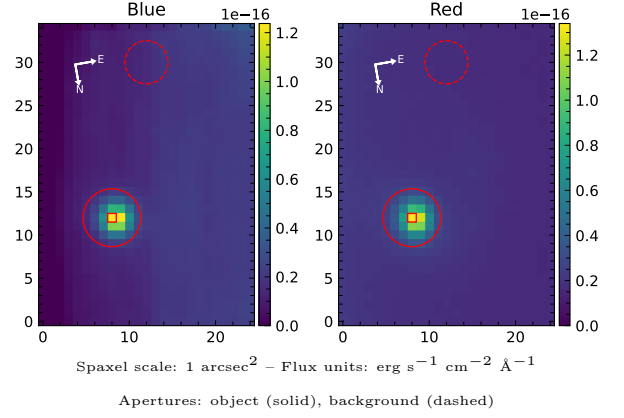


LEDA 225607

Spectrum ID	408665904_sp3	Spectrum type	Sy 1.2
Alt name	g1514420-812338	Quality flag	good
z	0.0682	AGN reference	6dFGS
RA, Dec	228.6750, -81.3939	MW $E(B-V)$	0.234
MJD	59346.7	Power law α_ν	0.47 ± 0.03
SNR/ \AA B/R	12.0/24.7	$\log L_{5100, \text{AGN}}$	43.89 ± 0.01
Obs airmass	1.65	$\log H\beta_{\text{Br}}/[\text{O III}]$	0.56 ± 0.01
SMSS ID	408665904	$\log M_{L5100}/M_\odot$	9.17 ± 0.04
Neighbour	14.1", 408665905	$\log M_{H\alpha}/M_\odot$	8.99 ± 0.04
SMSS $\langle r_6^{\text{ap}} \rangle$	16.00 ± 0.13	$\log M_{H\beta}/M_\odot$	9.48 ± 0.04
2MASS K_{ext}	12.03 ± 0.09	$\log M_{[\text{O III}]} / M_\odot$	9.41 ± 0.04



Emission Line Measurements

Line	$\log L$ (erg s $^{-1}$)	FWHM (km s $^{-1}$)	σ (km s $^{-1}$)	EW (Angstrom)
H γ Narrow	—	—	—	—
Hγ Broad	41.58 ± 0.09	4645 ± 304	3865 ± 154	16.95 ± 3.56
[O III] 4364	—	—	—	—
He II Narrow	—	—	—	—
He II Broad	—	—	—	—
H β Narrow	40.94 ± 0.08	336 ± 62	1982 ± 99	5.08 ± 2.45
Hβ Broad	42.74 ± 0.01	14406 ± 672	11286 ± 30	338.91 ± 3.56
[O III] 5007	42.18 ± 0.01	336 ± 62	3012 ± 26	95.88 ± 3.56
He I Narrow	—	—	—	—
He I Broad	41.96 ± 0.03	15306 ± 62	6500 ± 25	85.31 ± 3.56
[O I] 6300	40.68 ± 0.05	336 ± 62	141 ± 25	5.32 ± 1.76
H α Narrow	41.58 ± 0.01	336 ± 62	141 ± 25	46.71 ± 2.51
Hα Broad	42.91 ± 0.01	9254 ± 66	6563 ± 25	989.74 ± 3.56
[N II] 6585	41.61 ± 0.01	336 ± 62	141 ± 25	50.63 ± 2.57
[S II] 6718	41.02 ± 0.03	336 ± 62	141 ± 25	13.64 ± 2.02
[S II] 6732	40.97 ± 0.03	336 ± 62	141 ± 25	12.22 ± 2.00

Emission Summary

H α broad SNR	13.29
H β broad SNR	7.61
H γ broad SNR	1.93
AGN frac	0.82
Host frac	0.18
$\log L_{5100, \text{Host}}$	43.23
Fe II/H β	0.11
Fe II/[O III]	0.38

Quality Flags

spurious_hab/hbb	0/0
15100	2
balmer	0
balmer_snr	1
hb_width	2
balmer_width	0