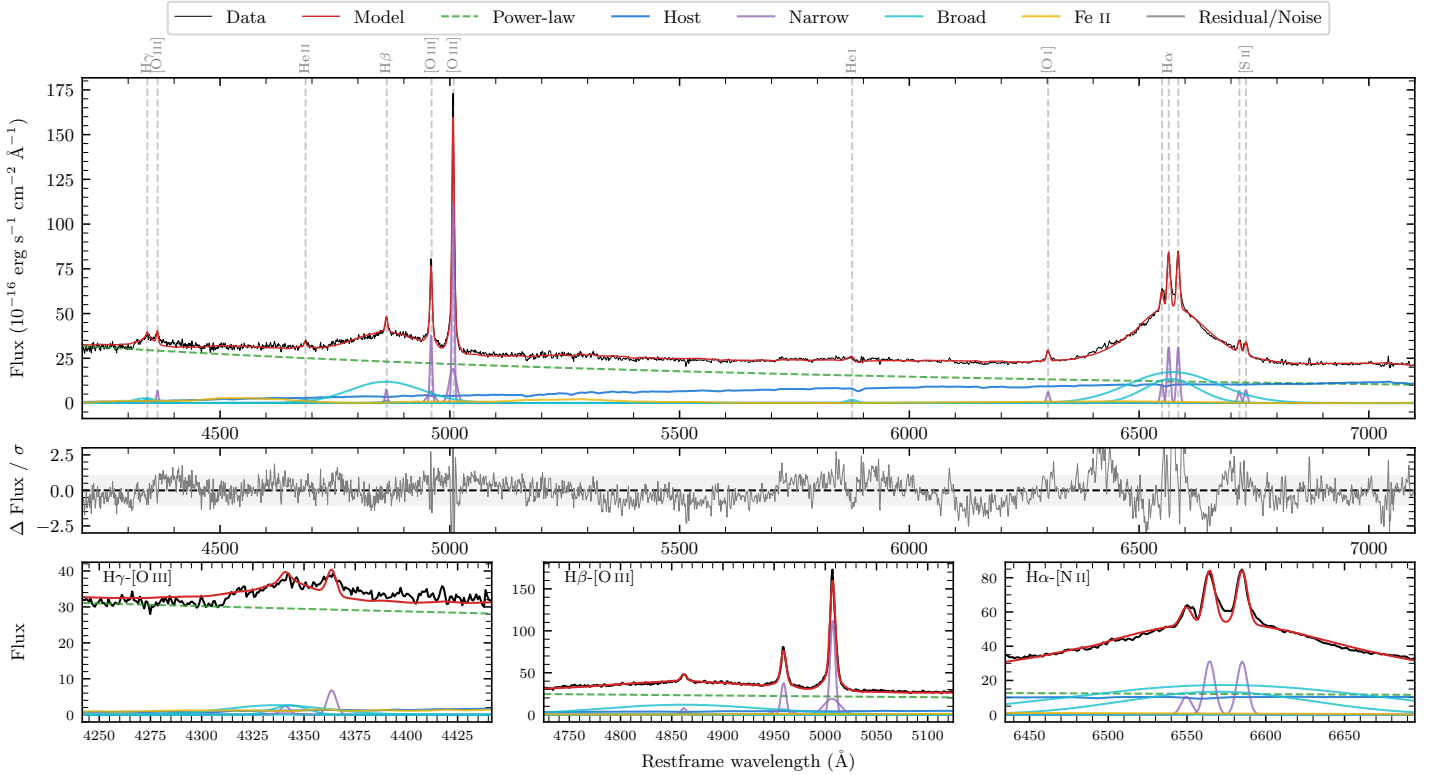
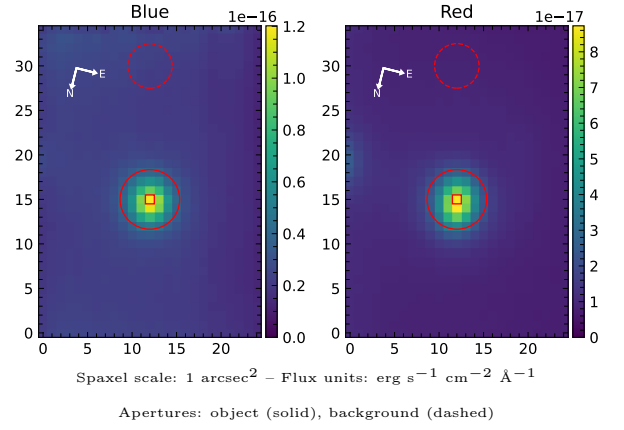


LEDA 225607

Spectrum ID	408665904_sp1	Spectrum type	Sy 1.2
Alt name	g1514420-812338	Quality flag	good
z	0.0682	AGN reference	6dFGS
RA, Dec	228.6750, -81.3939	MW $E(B - V)$	0.234
MJD	59015.55	Power law α_ν	0.16 ± 0.15
SNR/ \AA B/R	16.9/26.9	$\log L_{5100, \text{AGN}}$	44.08 ± 0.03
Obs airmass	1.58	$\log H\beta_{\text{Br}}/[\text{O III}]$	0.34 ± 0.06
SMSS ID	408665904	$\log M_{L5100}/M_\odot$	8.99 ± 0.13
Neighbour	14.1", 408665905	$\log M_{\text{H}\alpha}/M_\odot$	8.89 ± 0.10
SMSS $\langle r_6^{\text{ap}} \rangle$	16.00 ± 0.13	$\log M_{\text{H}\beta}/M_\odot$	9.09 ± 0.13
2MASS K_{ext}	12.03 ± 0.09	$\log M_{[\text{O III}]} / M_\odot$	9.11 ± 0.13



Emission Line Measurements

Line	$\log L$ (erg s ⁻¹)	FWHM (km s ⁻¹)	σ (km s ⁻¹)	EW (Å)
H γ Narrow	40.40 ± 0.28	407 ± 69	308 ± 50	0.75 ± 0.29
Hγ Broad	41.42 ± 0.30	2477 ± 1531	1211 ± 892	7.88 ± 0.58
[O III] 4364	40.67 ± 0.13	361 ± 69	153 ± 28	1.39 ± 0.17
He II Narrow	40.26 ± 0.23	361 ± 69	153 ± 28	0.65 ± 0.17
He II Broad	40.97 ± 0.17	2773 ± 907	1178 ± 385	3.43 ± 0.49
H β Narrow	40.95 ± 0.09	407 ± 69	309 ± 50	3.38 ± 0.33
Hβ Broad	42.46 ± 0.06	10539 ± 1685	4241 ± 635	110.44 ± 1.18
[O III] 5007	42.12 ± 0.01	407 ± 69	309 ± 50	53.92 ± 0.39
He I Narrow	39.91 ± 0.29	361 ± 69	153 ± 28	0.47 ± 0.16
He I Broad	40.81 ± 0.33	1399 ± 628	594 ± 266	3.67 ± 0.36
[O I] 6300	40.77 ± 0.06	361 ± 69	153 ± 28	3.93 ± 0.19
H α Narrow	41.52 ± 0.06	361 ± 69	153 ± 28	23.16 ± 0.29
Hα Broad	42.89 ± 0.01	8344 ± 844	3322 ± 97	549.51 ± 1.42
[N II] 6585	41.52 ± 0.08	361 ± 69	153 ± 28	23.19 ± 0.30
[S II] 6718	40.83 ± 0.05	361 ± 69	153 ± 28	5.16 ± 0.26
[S II] 6732	40.88 ± 0.06	361 ± 69	153 ± 28	5.75 ± 0.27

Emission Summary

H α broad SNR	18.10
H β broad SNR	7.45
H γ broad SNR	3.03
AGN frac	0.82
Host frac	0.18
$\log L_{5100, \text{Host}}$	43.42
Fe II/H β	0.27
Fe II/[O III]	0.59

Quality Flags

spurious_hab/hbb	0/0
15100	0
balmer	0
balmer_snr	0
hb_width	0
balmer_width	0