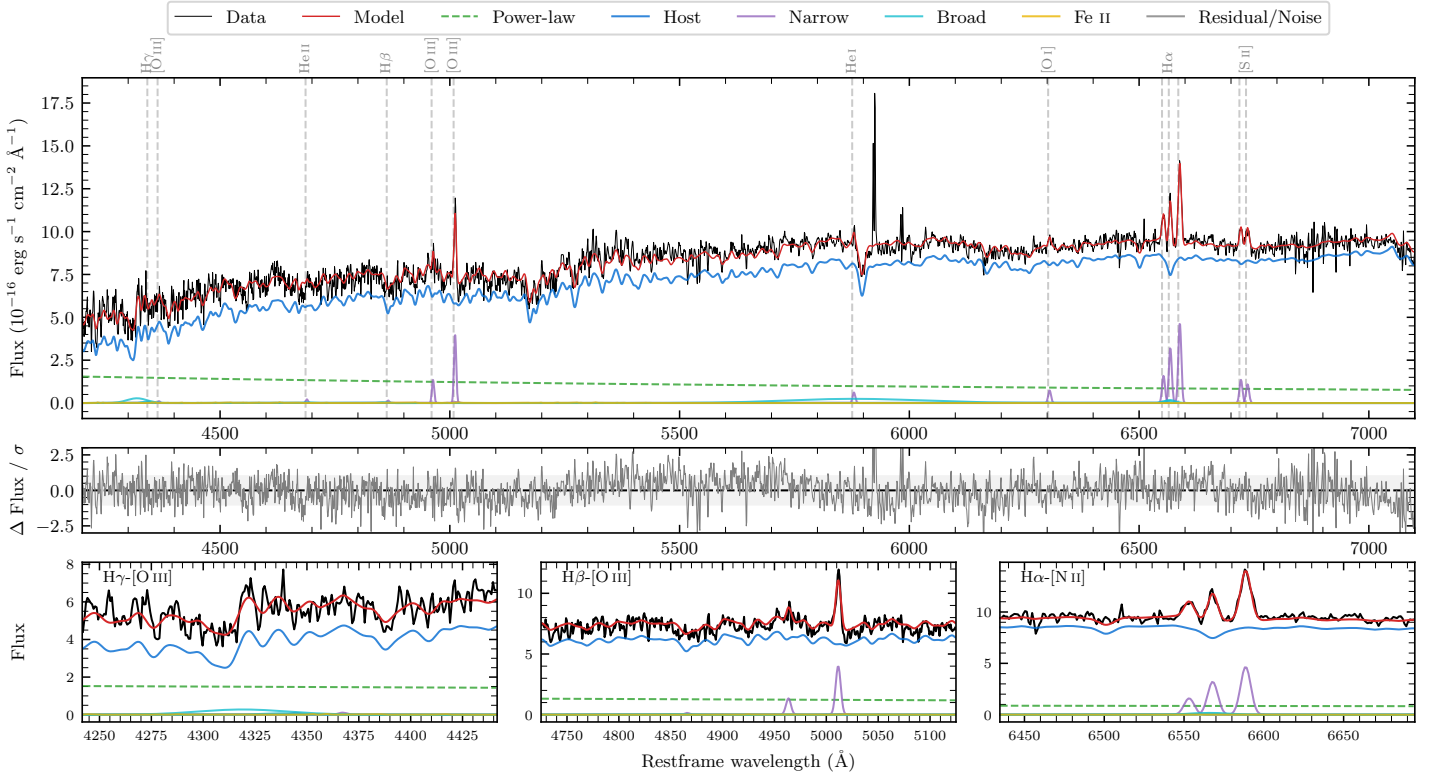
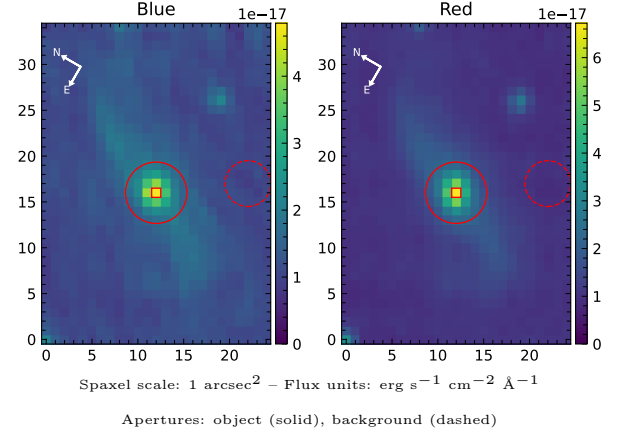


LEDA 285329

Spectrum ID	404174006_sp1	Spectrum type	SF
Alt name	g1742125-683049	Quality flag	good
z	0.0646	AGN reference	6dFGS
RA, Dec	265.5521, -68.5136	MW $E(B - V)$	0.066
MJD	60164.39	Power law α_ν	-0.67 ± 0.11
SNR/ \AA B/R	14.1/26.9	$\log L_{5100, \text{AGN}}$	42.78 ± 0.05
Obs airmass	1.29	$\log H\beta_{\text{Br}}/[\text{O III}]$	—
SMSS ID	404174006	$\log M_{L5100}/M_\odot$	—
Neighbour	12.2", 404174005	$\log M_{\text{H}\alpha}/M_\odot$	—
SMSS $\langle r_{6'' \text{ap}} \rangle$	16.40 ± 0.06	$\log M_{\text{H}\beta}/M_\odot$	—
2MASS K_{ext}	11.80 ± 0.07	$\log M_{[\text{O III}]} / M_\odot$	—



Emission Line Measurements

Line	$\log L$ (erg s $^{-1}$)	FWHM (km s $^{-1}$)	σ (km s $^{-1}$)	EW (Angstroms)
H γ Narrow	—	—	—	—
Hγ Broad	—	—	—	—
[O III] 4364	—	—	—	—
He II Narrow	39.11 ± 0.41	345 ± 62	145 ± 25	0.99 ± 0.83
He II Broad	—	—	—	—
H β Narrow	—	—	—	—
Hβ Broad	—	—	—	—
[O III] 5007	40.43 ± 0.03	348 ± 63	154 ± 26	22.00 ± 1.35
He I Narrow	39.66 ± 0.14	345 ± 62	145 ± 25	4.74 ± 0.97
He I Broad	40.98 ± 0.08	17661 ± 62	7500 ± 25	97.86 ± 8.82
[O I] 6300	39.77 ± 0.11	345 ± 62	145 ± 25	6.69 ± 1.00
H α Narrow	40.43 ± 0.04	345 ± 62	145 ± 25	31.96 ± 1.21
Hα Broad	—	—	—	—
[N II] 6585	40.59 ± 0.02	345 ± 62	145 ± 25	46.88 ± 1.17
[S II] 6718	40.06 ± 0.06	345 ± 62	145 ± 25	14.20 ± 1.20
[S II] 6732	39.97 ± 0.07	345 ± 62	145 ± 25	11.57 ± 1.17

Emission Summary

H α broad SNR	0.66
H β broad SNR	0.00
H γ broad SNR	0.00
AGN frac	0.16
Host frac	0.84
$\log L_{5100, \text{Host}}$	43.50
Fe II/H β	—
Fe II/[O III]	—

Quality Flags

spurious_hab/hbb	0/0
15100	2
balmer	2
balmer_snr	2
hb_width	2
balmer_width	2